

See for similar files: <http://www.ps.bam.de/BE03/>  
Information and Order: <http://www.ps.bam.de>  
Version 2.0, io=0,0

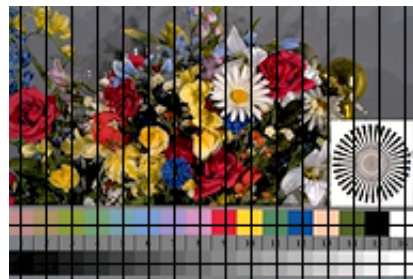
BAM registration: 20040901-BE03/10L/L03E00NP.PS/.PDF  
Application for printers and monitors  
BAM material: code=tha4ta



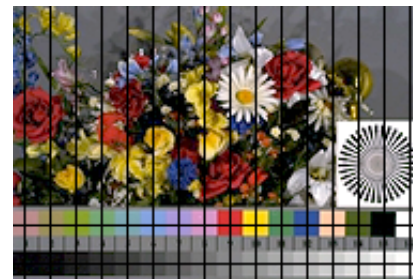
BE03/L10-1 B12C:W1260-1N.081 olv\*, sf, exposure +0,0 stop



BE03/L10-2 B12C:W1260-2N.082 olv\*, sf, exposure -1,5 stops



BE03/L11-1 B12C:W1261-1N.089 olv\*, nf, exposure +0,0 stop



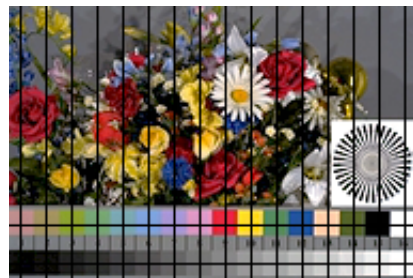
BE03/L11-2 B12C:W1261-2N.090 olv\*, nf, exposure -2,0 stops



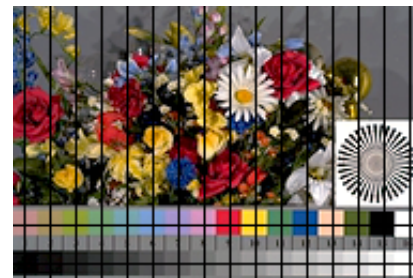
BE03/L10-3 B12C:W1260-3N.083 olv\*, sf, exposure -1,0 stop



BE03/L10-4 B12C:W1260-4N.084 olv\*, sf, exposure -0,5 stops



BE03/L11-3 B12C:W1261-3N.091 olv\*, nf, exposure -1,0 stop



BE03/L11-4 B12C:W1261-4N.092 olv\*, nf, exposure +0,0 stop



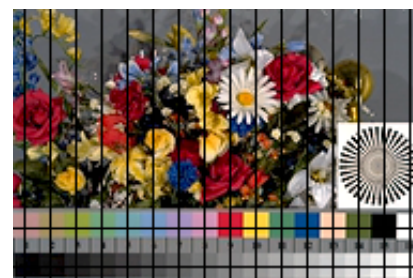
BE03/L10-5 B12C:W1260-5N.085 olv\*, sf, exposure +0,0 stop



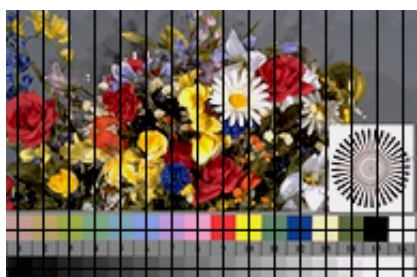
BE03/L10-6 B12C:W1260-6N.086 olv\*, sf, exposure +0,5 stops



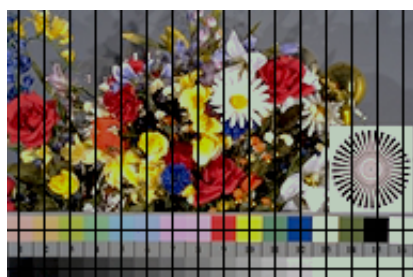
BE03/L11-5 B12C:W1261-5N.093 olv\*, nf, exposure +1,0 stop



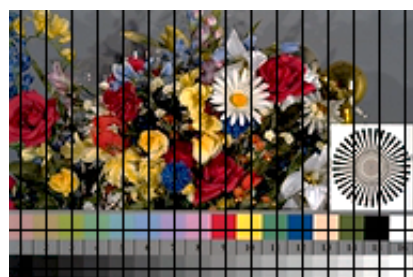
BE03/L11-6 B12C:W1261-6N.094 olv\*, nf, exposure +2,0 stops



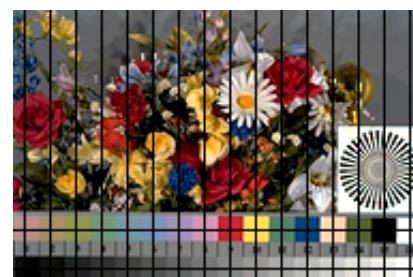
BE03/L10-7 B12C:W1260-7N.087 olv\*, sf, exposure +1,0 stop



BE03/L10-8 B12C:W1260-8N.088 olv\*, sf, exposure +1,5 stops



BE03/L11-7 B12C:W1261-7N.095 olv\*, nf, exposure +3,0 stops



BE03/L11-8 B12C:W1261-8N.096 olv\*, nf, exposure +4,0 stops

BAM-test chart no. BE03; Linearized scan with grid  
Slide (left) and negative (right) film with 7 steps of exposure

input: cmy0\* / 000n\* setcmykcolor  
output: no change compared to input