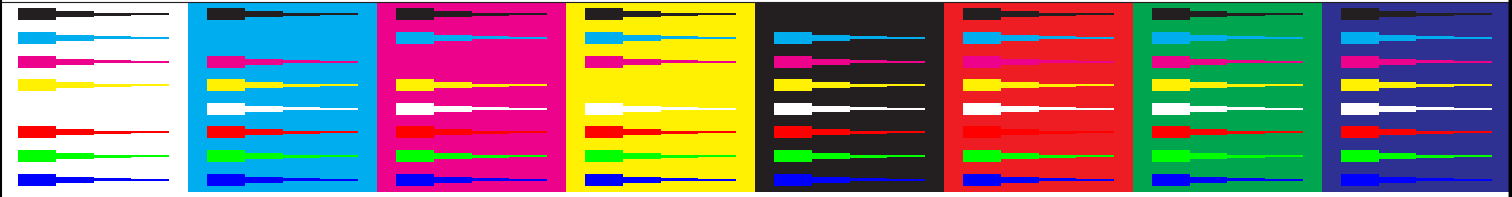




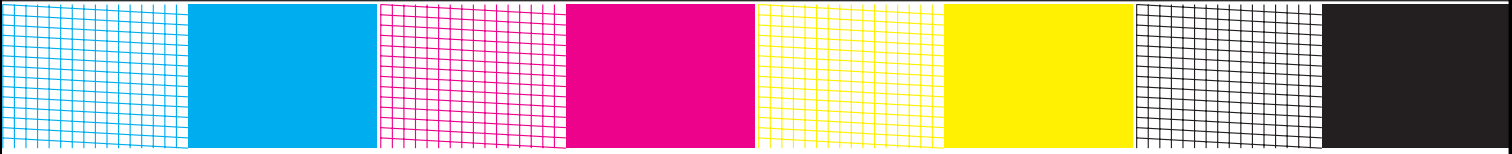
Picture 1: Text for "Start-up"

Test chart 1 for the preparation of refilled inkjet print heads and inkjet tanks according to DIN 33871-1:2003-10, PDF-Format

Date, Test person: _____ Test device type: _____
 Driver adjustment: _____ Paper: _____ Test device number: _____
 Resolution: _____ Ink: black: _____
 Modus: _____ coloured: _____
 Driver version: _____ Test paper: _____



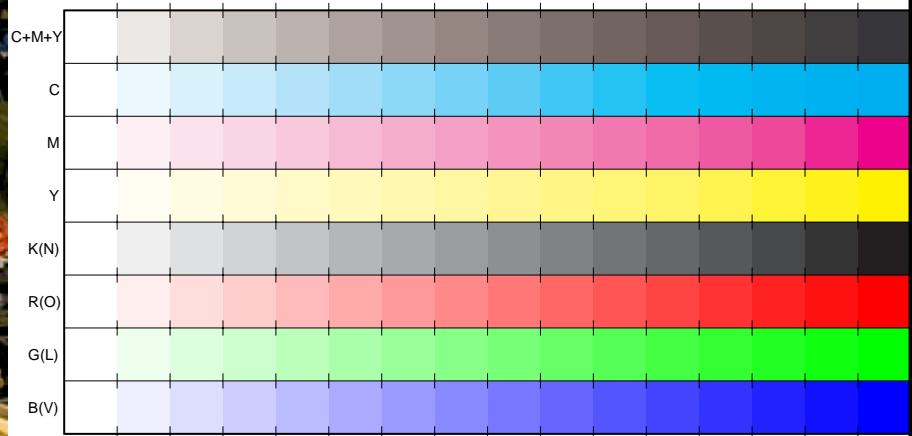
Picture 2: Graphic box for "Bleeding" and "Feathering"



Picture 3: Grid drawing for "Starvation-Test"



Picture 4: Picture with flowers for "Colour reproduction"



Picture 5: 16 equidistant steps for "Banding" and "Strike through"



Picture 6: CIE-test colors (mixture colours) and basic colors for "Colour reproduction"

Picture 7: Primary and secondary colours for "Colour reproduction", "Light Fastness" and "Smear Resistance"

