



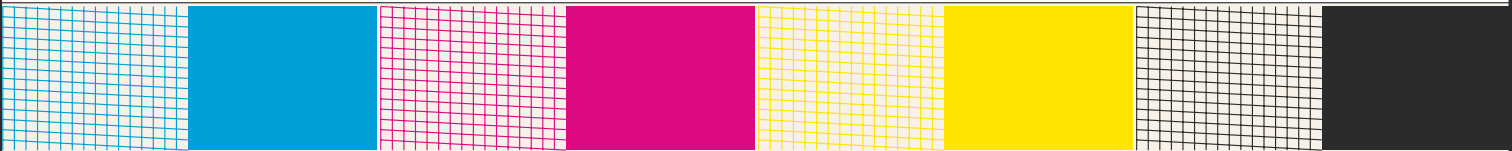
Picture 1: Text for "Start-up"

Test chart 1 for the preparation of refilled inkjet print heads and inkjet tanks according to DIN 33871-1:2003-10, PDF-Format

Date, Test person:		Test device type:	
Driver adjustment	Paper:	Test device number:	
	Resolution:	Ink: black:	
	Modus:	coloured:	
Driver version:		Test paper:	



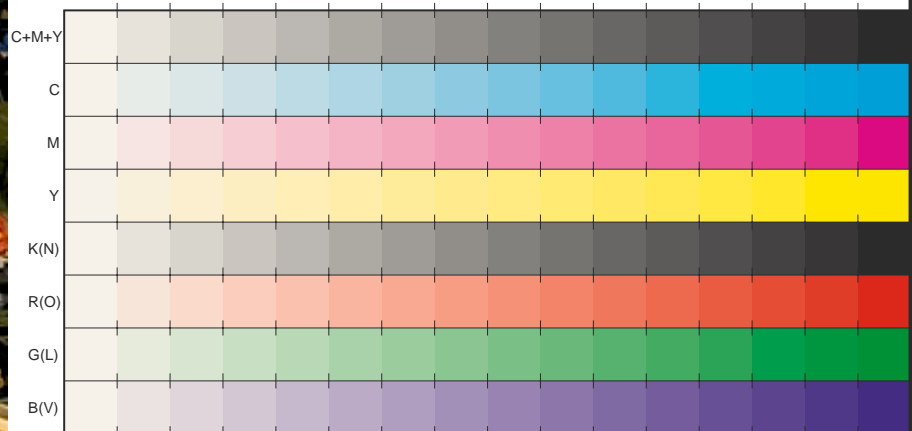
Picture 2: Gratic box for "Bleeding" and "Feathering"



Picture 3: Grid drawing for "Starvation-Test"



Picture 4: Picture with flowers for "Colour reproduction"



Picture 5: 16 equidistant steps for "Banding" and "Strike through"



Picture 6: CIE-test colors (mixture colours) and basic colors for "Colour reproduction"

Picture 7: Primary and secondary colours for "Colour reproduction", "Light Fastness" and "Smear Resistance"

