



Picture 1: Text for "Start-up"

**Test chart 1 for the preparation of refilled inkjet print heads and inkjet tanks according to DIN 33871:2003, PDF-Format**

Date: Test person: 2003-05-01, K. Richter

Driver adjustment

Paper:

Resolution:

Modus:

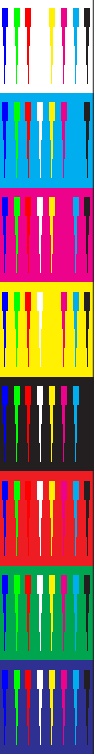
Test device type: unknown

Test device number:

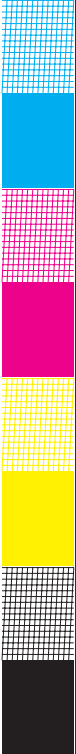
Ink: black:

coloured:

Test paper:



Picture 2: Gratic box for "Bleeding" and "Feathering"



Picture 3: Grid drawing for "Start-up-Test"

C+M+Y	C	M	Y	K(N)	R(O)	G(L)	B(V)
abcdefghijklmnopqrstuvwxyz0123456789-.,:;~	abcdefghijklmnopqrstuvwxyz0123456789-.,:;~	abcdefghijklmnopqrstuvwxyz0123456789-.,:;~	abcdefghijklmnopqrstuvwxyz0123456789-.,:;~	abcdefghijklmnopqrstuvwxyz0123456789-.,:;~	abcdefghijklmnopqrstuvwxyz0123456789-.,:;~	abcdefghijklmnopqrstuvwxyz0123456789-.,:;~	abcdefghijklmnopqrstuvwxyz0123456789-.,:;~

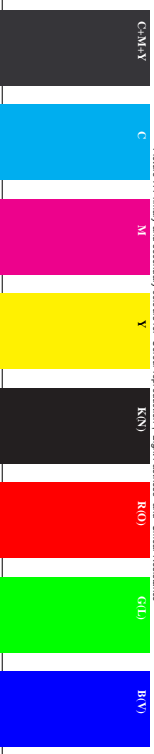
Picture 5: 16 equidistant steps for "Bandung" and "Strike through"

1	2	3	4	5	6
7	8	9	10	11	12
13	14	C+M+Y	C	M	Y

Picture 6: CMY test colors (mixture colours) and basic colors for "Colour reproduction"



Picture 4: Picture with flowers for "Colour reproduction"



Picture 7: Primary and secondary colours for "Colour reproduction", "Light Fastness" and "Smear Resistance"