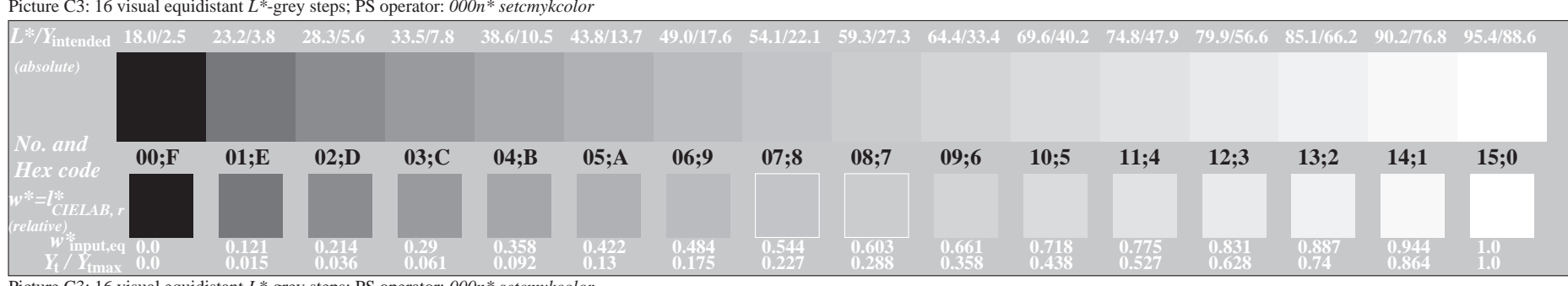
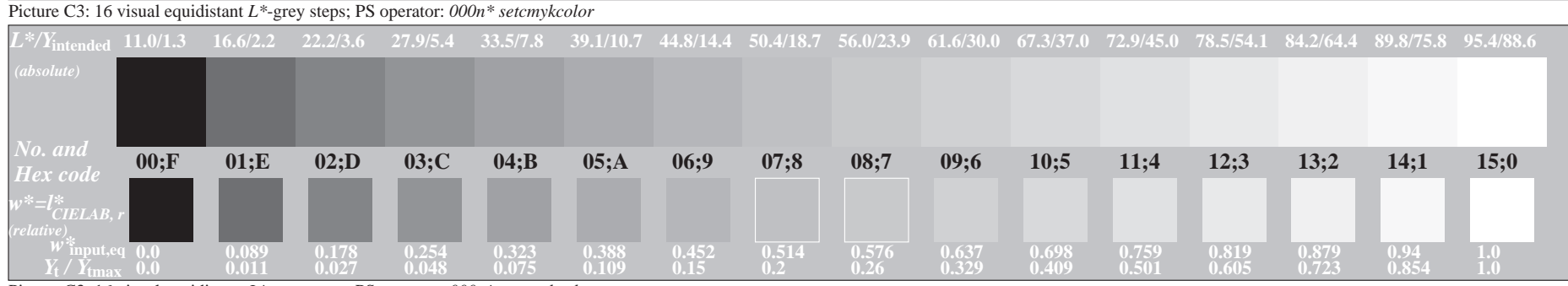
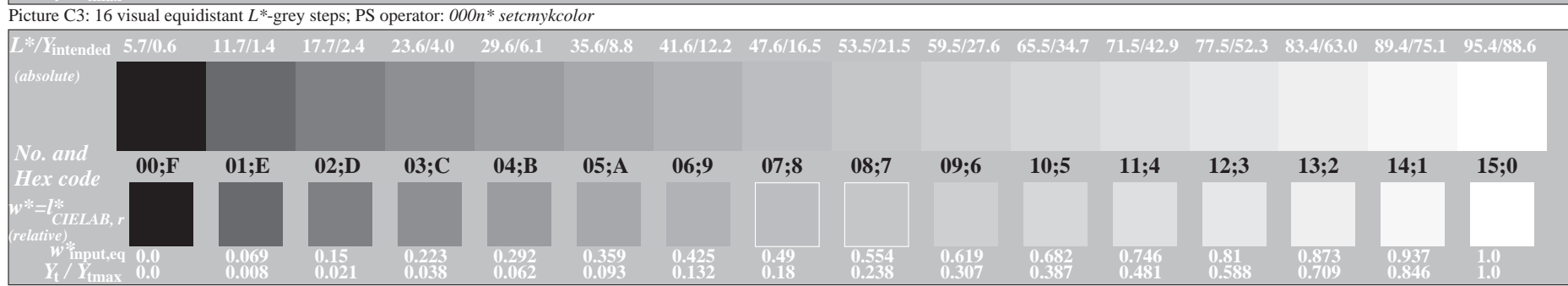
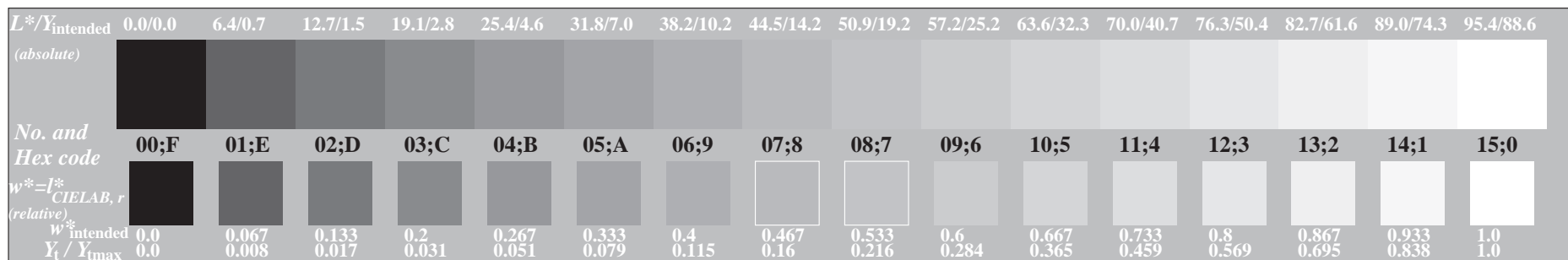


See for similar files: <http://www.ps.bam.de/CE60/>
 Technical information: <http://www.ps.bam.de/9241>

Version 2.0, io=0.0, CIEXYZ, 2.0 exp



See for similar files: <http://www.ps.bam.de/CE60/>
 Technical information: <http://www.ps.bam.de/9241>

Version 2.0, io=0.0, CIEXYZ, 2.0 exp

BAM registration: 20040101-CE60/10Q/Q60E40FP.PS/.PDF BAM material: code=rhadata
 Application for achromatic display output with CIELAB contrast range $L^*_w:L^*_n = 95.4 : 38.0$ $L^*_w:L^*_n = 95.4 : 52.0$

