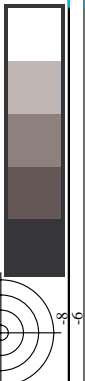




www.ps.bam.de/CE60/10S/S60E00SP.PS/.PDF;
S: Output Linearization (OL) data CE60/10S/S60E00SP.DAT in Distiller Startup (S) Directory

ISO 9241-test chart for four different contrast ranges
Ergonomics – Visual Displays – Field Assessment Methods
input: 000n* setcnykcolor
output: no change compared to input



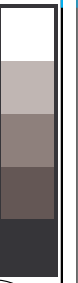
BAM registration: 20040101-CE60/10S/S60E40SP.PS/.PDF BAM material: code=rha4ta
Application for achromatic display output with CIELAB contrast range

$L^*w:L^*n = 95.4 : 0.0$ $L^*w:L^*n = 95.4 : 0.0$ $L^*w:L^*n = 95.4 : 0.0$



www.ps.bam.de/CE60/10S/S60E40SP.PS/.PDF;
S: Output Linearization (OL) data CE60/10S/S60E40SP.DAT in Distiller Startup (S) Directory

input: 000n* setcnykcolor
output: no change compared to input



$Yw:Yn = 88.6 : 0.0$ $Yw:Yn = 88.6 : 0.0$ $Yw:Yn = 88.6 : 0.0$

See for similar files: <http://www.ps.bam.de/CE60/>
Technical information: <http://www.ps.bam.de/9241> Version 2.0, io=0,0, CIELAB, 1.0 exp

ISO 9241-test chart for four different contrast ranges
Ergonomics – Visual Displays – Field Assessment Methods