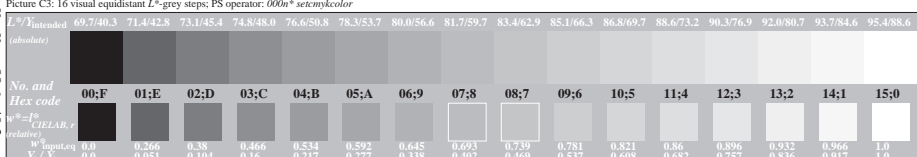
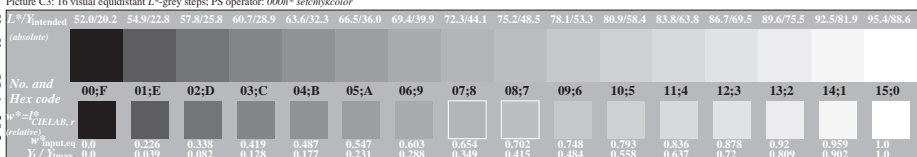
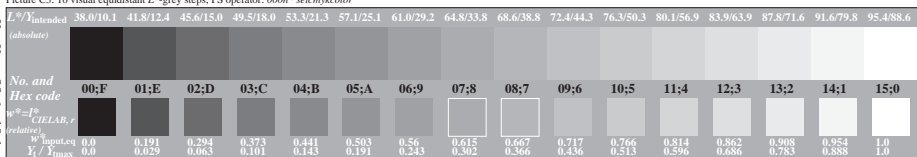
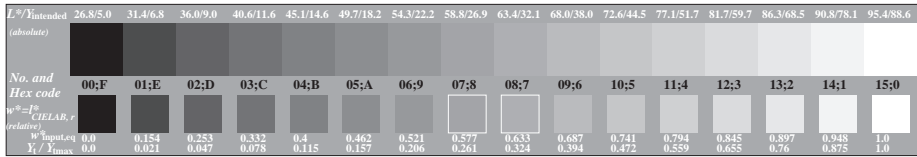


See for similar files: <http://www.ps.bam.de/CE60/>
 Technical information: <http://www.ps.bam.de/9241>

Version 2.0, io=0.0, CIEXYZ, 1.0 exp

BAM registration: 20040101-CE60/L60E00F1.PS/TXT
 Application for achromatic display output with CIE/AB contrast range
 BAM material-code=ha4ta
 $L^*_{90}:L^*_{50} = 95.4 : 5.7$
 $L^*_{90}:L^*_{50} = 95.4 : 1.10$
 $L^*_{90}:L^*_{50} = 95.4 : 18.0$



See for similar files: <http://www.ps.bam.de/CE60/>
 Technical information: <http://www.ps.bam.de/9241>

Version 2.0, io=0.0, CIEXYZ, 1.0 exp

BAM registration: 20040101-CE60/L60E00F1.PS/TXT
 Application for achromatic display output with CIE/AB contrast range
 $L^*_{90}:L^*_{50} = 95.4 : 38.0$
 $L^*_{90}:L^*_{50} = 95.4 : 52.0$
 $L^*_{90}:L^*_{50} = 95.4 : 69.7$

BAM material-code=hd4ta