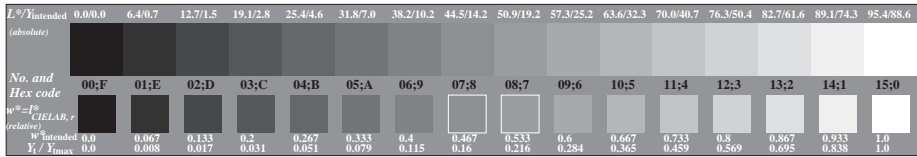
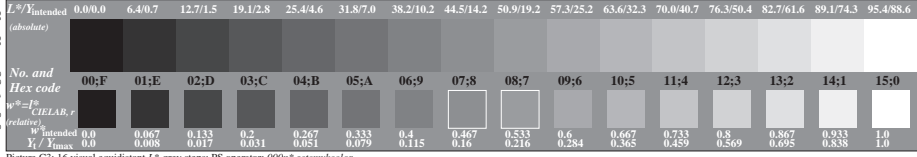


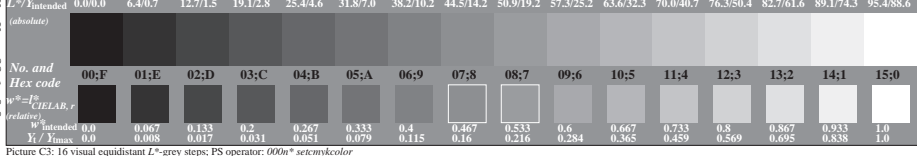
www.ps.bam.de/CE60/L60E00N1.PS/.TXT; start output
 N: No Output Linearization (OL) data in File (F), Startup (S) or Device (D)



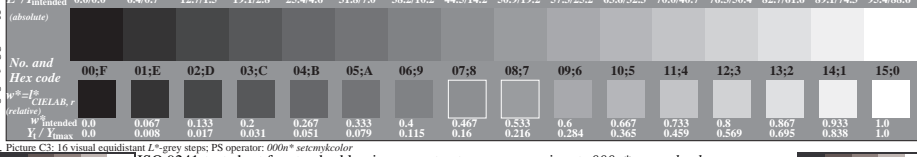
Picture C3: 16 visual equidistant L^* -grey steps; PS operator: 000n* setcmykcolor



Picture C3: 16 visual equidistant L^* -grey steps; PS operator: 000n* setcmykcolor



Picture C3: 16 visual equidistant L^* -grey steps; PS operator: 000n* setcmykcolor



Picture C3: 16 visual equidistant L^* -grey steps; PS operator: 000n* setcmykcolor

ISO 9241-test chart for standard luminous contrast range

input: 000n* setcmykcolor

output: no change compared to input

See for similar files: <http://www.ps.bam.de/CE60/>
 Technical information: <http://www.ps.bam.de/9241>

Yn: Yn = 88.6 : 0.0

Yn: Yn = 88.6 : 0.0

Yn: Yn = 88.6 : 0.0

$L^*_{90}: L^*_{90} = 95.4 : 0.0$

$L^*_{90}: L^*_{90} = 95.4 : 0.0$

$L^*_{90}: L^*_{90} = 95.4 : 0.0$

BAM registration: 20040101-CE60/L60E00N1.PS/.TXT
 Application for achromatic display output with CIE/LAB contrast range

BAM material: code=hh4ta

Version 2.0, io=0.0, CIEXYZ, 1.0 exp