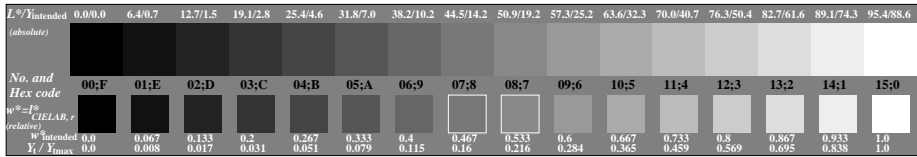
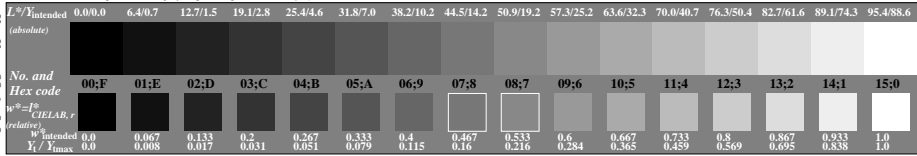


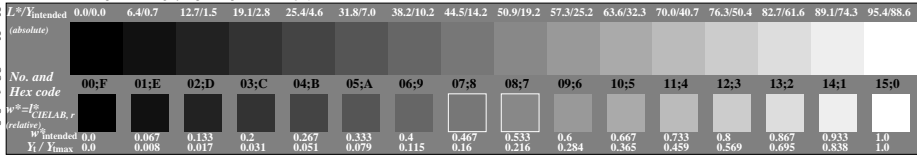
www.ps.bam.de/CE61/L61E00N1.PS/.TXT; start output
 N: No Output Linearization (OL) data in File (F), Startup (S) or Device (D)



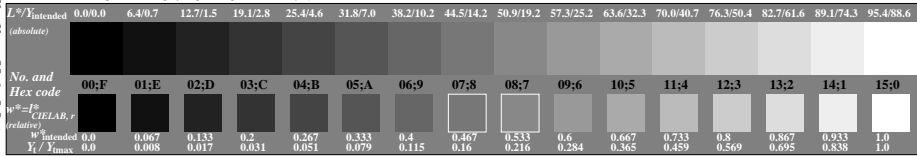
Picture C3: 16 visual equidistant L^* -grey steps; PS operator: $w^* setgray$



Picture C3: 16 visual equidistant L^* -grey steps; PS operator: $w^* setgray$



Picture C3: 16 visual equidistant L^* -grey steps; PS operator: $w^* setgray$



Picture C3: 16 visual equidistant L^* -grey steps; PS operator: $w^* setgray$

ISO 9241-test chart for standard luminous contrast range
 Ergonomics – Visual Displays – Field Assessment Methods

input: $w^* setgray$
 output: no change compared to input

See for similar files: <http://www.ps.bam.de/CE61/>
 Technical information: <http://www.ps.bam.de/9241>

Version 2.0, io=1.1, CIEXYZ, 1.0 exp

BAM registration: 20040101-CE61/L61E00N1.PS/.TXT
 Application for achromatic display output with CIE/LAB contrast range
 BAM material: code=hh4ta