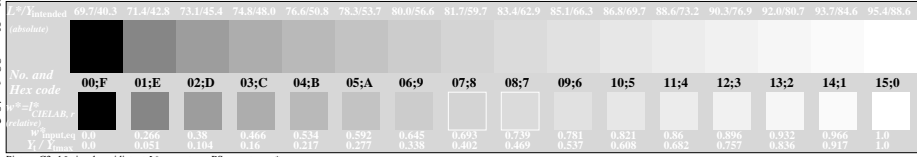
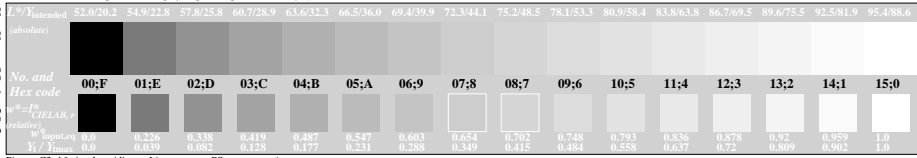
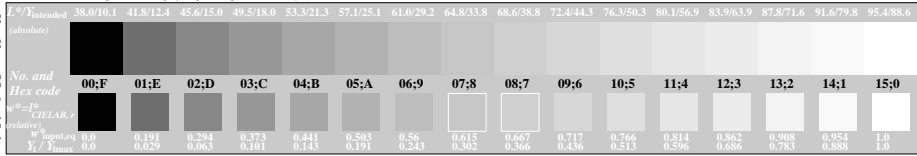
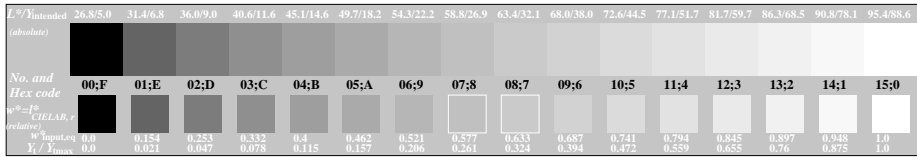


See for similar files: <http://www.ps.bam.de/CE61/>  
 Technical information: <http://www.ps.bam.de/9241>

Version 2.0, io=1.1, CIEXYZ, 2.0 exp

BAM registration: 20040101-CE61/10Q/Q61E00F1.PS/.TXT BAM material-code=hd4ta  
 Application for achromatic display output with CIE/AB contrast range  
 $L^*_{in}; L^*_{in} = 95.4 : 5.7$   
 $L^*_{in}; L^*_{in} = 95.4 : 1.10$   
 $L^*_{in}; L^*_{in} = 95.4 : 1.80$



See for similar files: <http://www.ps.bam.de/CE61/>  
 Technical information: <http://www.ps.bam.de/9241>

Version 2.0, io=1.1, CIE XYZ, 2.0 exp

BAM registration: 20040101-CE61/10Q/Q61E00F1.PS/.TXT  
 Application for achromatic display output with CIE LAB contrast range  
 BAM material: code=hh4ta

$L^*_{90}$ :  $L^*_{90} = 95.4$ ; 38.0  
 $L^*_{50}$ :  $L^*_{50} = 95.4$ ; 52.0