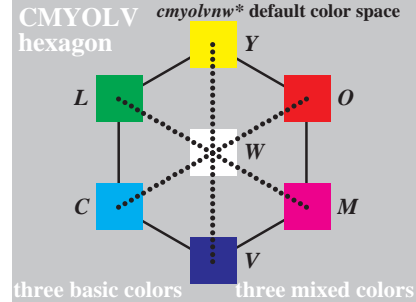


Technical information: <http://o2.ps.bam.de>

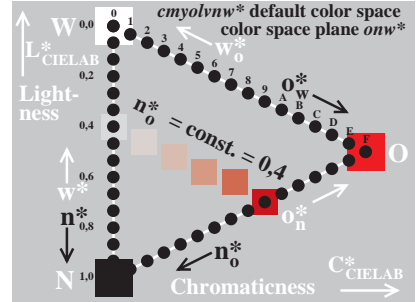
Image file version 1.4, 20010101, D8630E00

BAM registration: 20010101-D8630E00

BAM-Reference material: code=rh4ra-D8630E00



three basic colors three mixed colors
 E8630-1, 16step test chart colours in hexagon



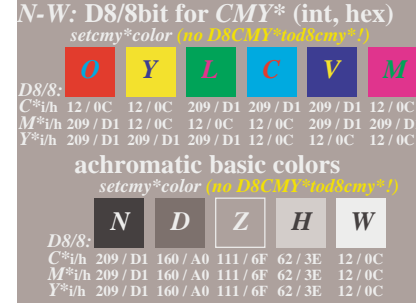
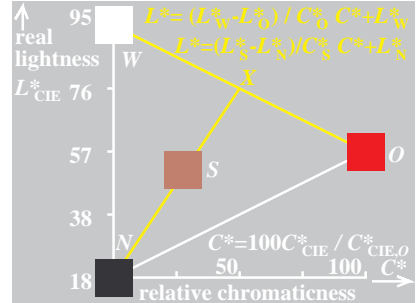
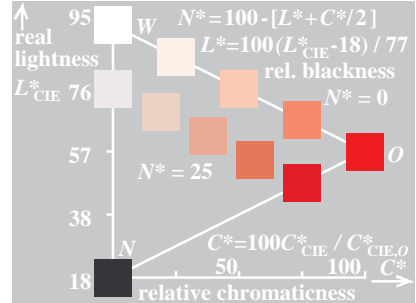
E8630-2, 16step test chart colours of hue O



E8631-1, digital data d8/8bit sgcde cmyn*



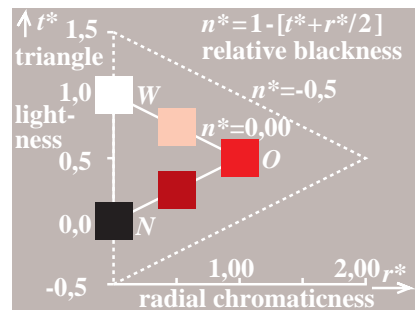
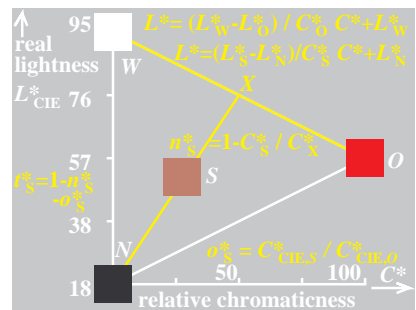
E8631-2, Digital data D8/8bit SGcode CMY*



E8631-3, Digital data D8/8bit SGcode CMY*



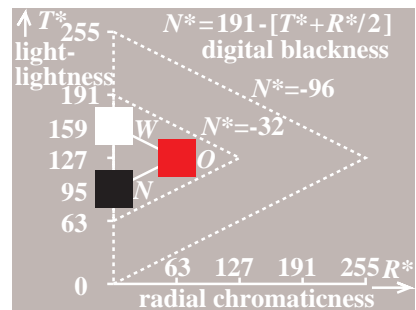
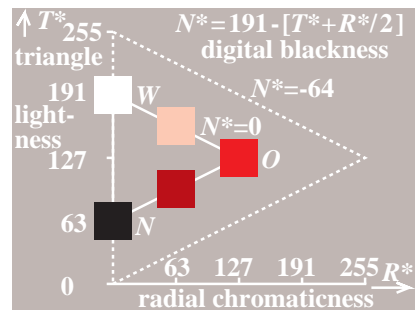
E8631-4, digital data d7/8bit mgcode cmyn*



E8631-5, digital data d7/8bit mgcode cmyn*

i	CMY*-255-OLV*	cmyn*-255-olv*	cmyn*-255-olv*	olv*-255-cmy*								
1	209	209	255	255	239	247	244	16	8	11		
2	196	196	196	238	238	238	246	244	17	9	11	
3	183	183	183	221	221	221	233	226	35	22	29	
4	170	170	170	204	204	204	207	215	214	48	40	41
5	156	156	156	187	187	187	193	198	199	62	57	56
6	143	143	143	170	170	170	181	186	187	74	69	68
7	130	130	130	153	153	153	168	173	173	87	82	82
8	117	117	117	136	136	136	155	160	158	100	95	97
9	104	104	104	119	119	119	141	147	145	114	108	110
10	91	91	91	102	102	102	129	132	129	126	123	126
11	78	78	78	85	85	85	116	119	115	139	136	140
12	65	65	65	68	68	68	102	106	99	153	149	156
13	51	51	51	51	51	51	88	92	88	167	163	167
14	38	38	38	34	34	34	76	80	76	179	175	179
15	25	25	25	17	17	17	59	64	60	196	191	195
16	12	12	12	0	0	0	48	51	47	207	204	208

E8631-6, CMY*, cmyn*, cmyn*, olv*: slide film



E8631-7, olv*_ad*; slide film, exposure +0,0



E8631-8, olv*_ad* slide film, exposure +0,0