

Technical information: <http://o2.ps.bam.de>

Image file version 1.5, 20010501-DE14

BAM registration: 20010501-DE14/10T/T10E10TP.PS/.PDF

BAM material: code=rha4ra

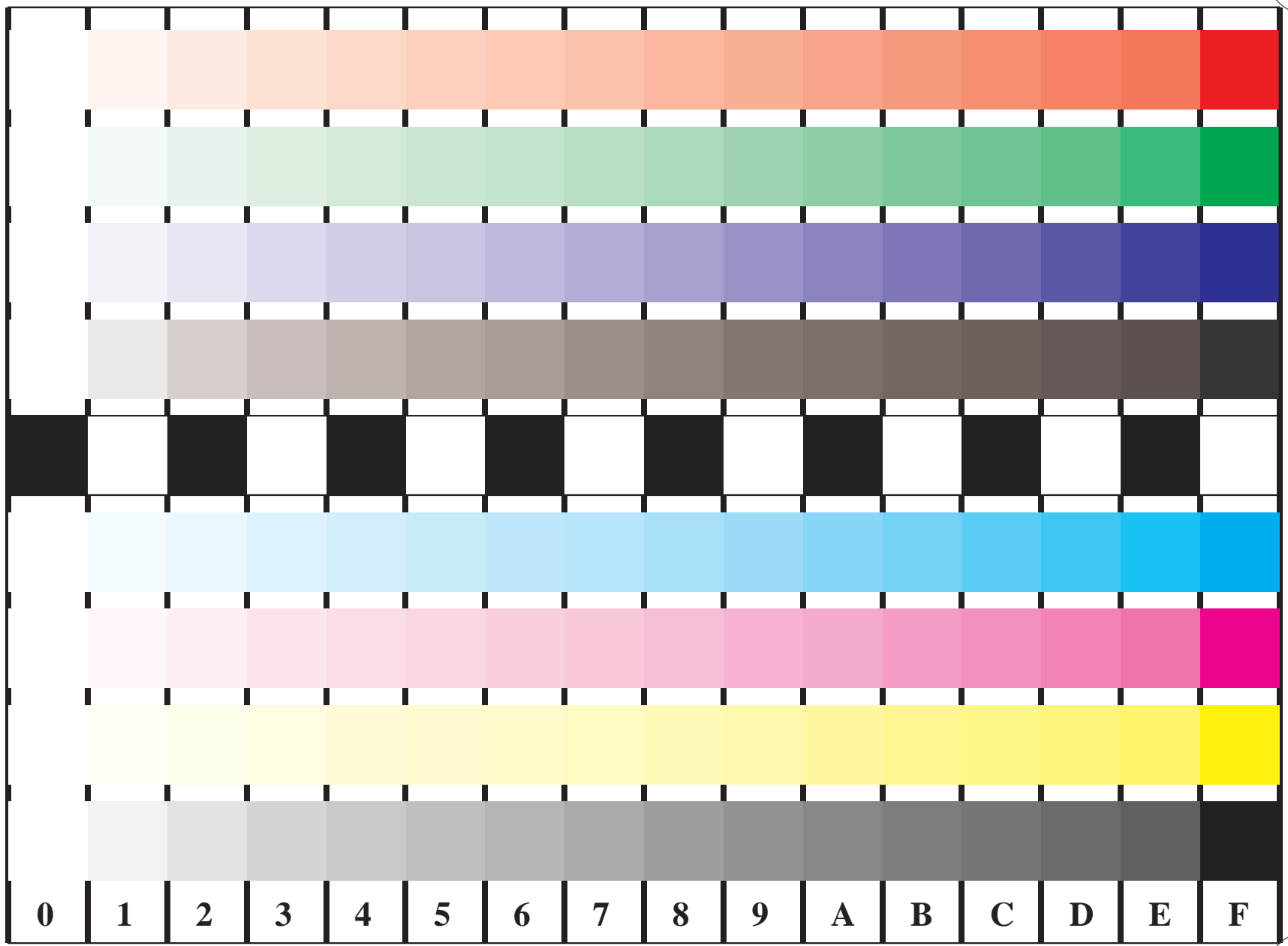


Figure B4 and/or D4 of the ISO/IEC-test charts;  $w^* - cmy^*$ ;  $w^* - olv(cmy)^*$ ; 16 visual equidistant steps of colour series:  $LAB^* \rightarrow \Delta LAB^*$ ; LM methods: N, F, S, D, T, E