

Technical information: <http://o2.ps.bam.de>

Image file version 1.5, 20010501-DE14

BAM registration: 20010501-DE14/10T/T10E30FP.PS/.PDF

BAM material: code=tha4ra

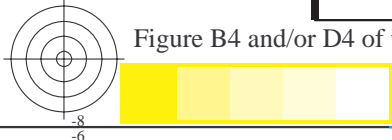
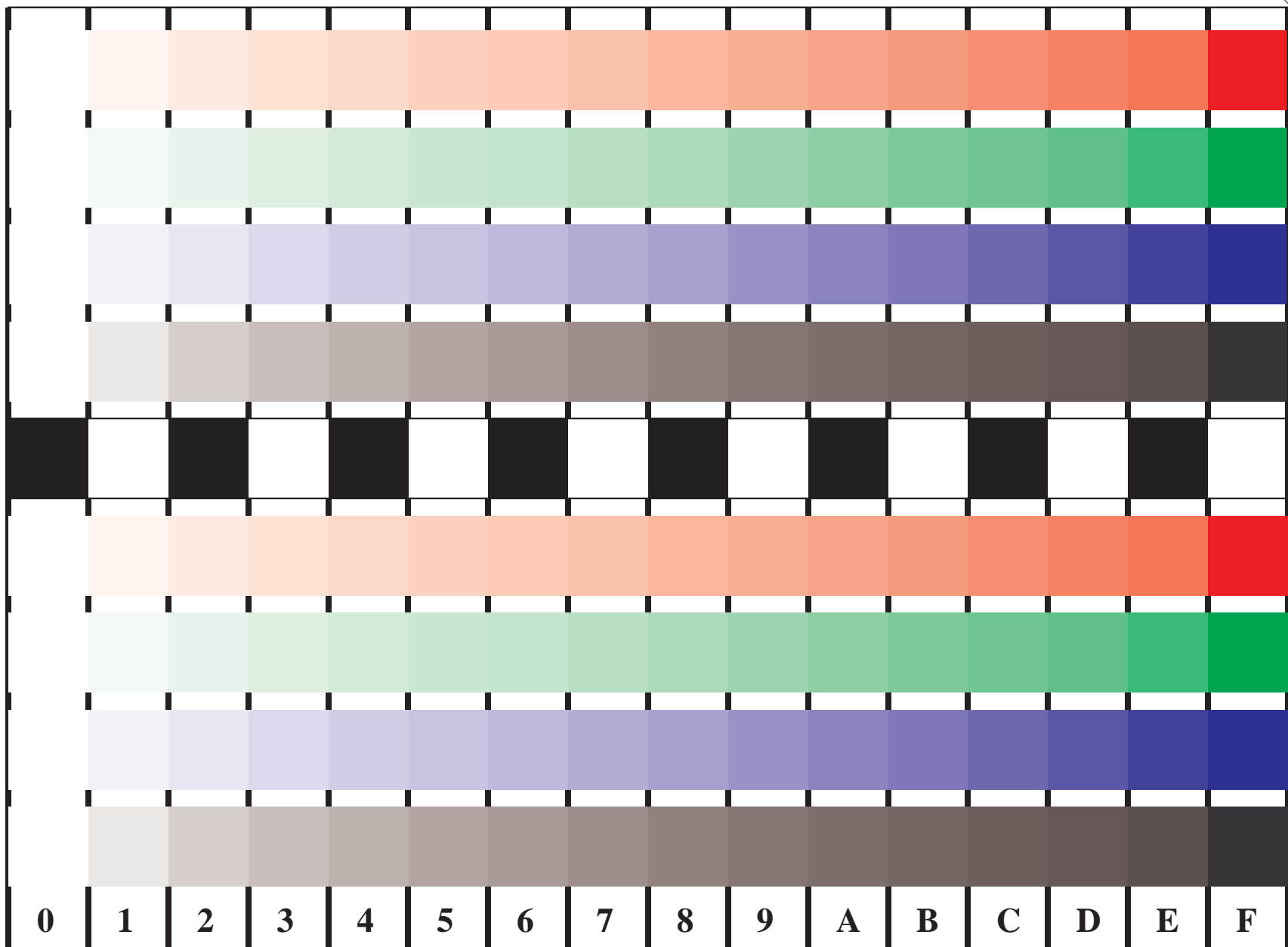


Figure B4 and/or D4 of the ISO/IEC-test charts; $w^* - cmy^*$; $w^* - olv(cmy)^*$; 16 visual equidistant steps of colour series: $LAB^* \rightarrow \Delta LAB^*$; LM methods: N, F, S, D, T, E

Output linearization of 16 colour steps according to ISO/IEC 15775; PS operator cmyn* setcmykcolor

