

Technical information: <http://o2.ps.bam.de>

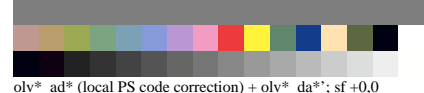
Exposure variation, slide and negative film (sf, nf)

BAM registration: 20010501-DE36/10T/T10E00DP.PS/.PDF

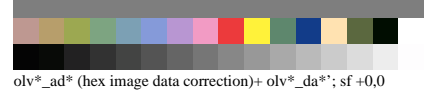
BAM material: code=tha4ra



T10-1N.EPS olv\*\_ad\*\* (scan image data) + olv\*\_da\*\*; sf +0,0



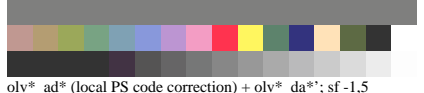
olv\*\_ad\* (local PS code correction) + olv\*\_da\*\*; sf +0,0



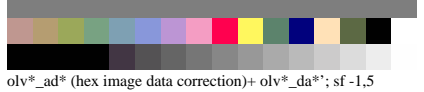
olv\*\_ad\* (hex image data correction)+ olv\*\_da\*\*; sf +0,0



T10-2N.EPS olv\*\_ad\*\* (scan image data) + olv\*\_da\*\*; sf -1,5



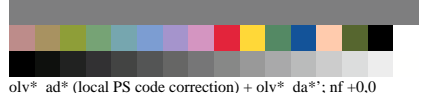
olv\*\_ad\* (local PS code correction) + olv\*\_da\*\*; sf -1,5



olv\*\_ad\* (hex image data correction)+ olv\*\_da\*\*; sf -1,5



T11-1N.EPS olv\*\_ad\*\* (scan image data) + olv\*\_da\*\*; nf +0,0



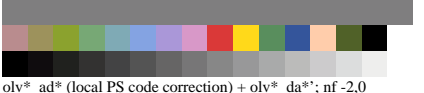
olv\*\_ad\* (local PS code correction) + olv\*\_da\*\*; nf +0,0



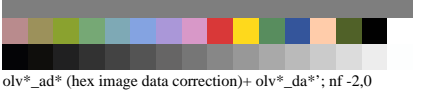
olv\*\_ad\* (hex image data correction)+ olv\*\_da\*\*; nf +0,0



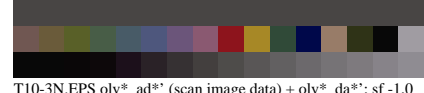
T11-2N.EPS olv\*\_ad\*\* (scan image data) + olv\*\_da\*\*; nf -2,0



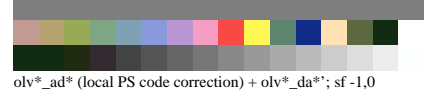
olv\*\_ad\* (local PS code correction) + olv\*\_da\*\*; nf -2,0



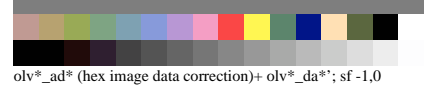
olv\*\_ad\* (hex image data correction)+ olv\*\_da\*\*; nf -2,0



T10-3N.EPS olv\*\_ad\*\* (scan image data) + olv\*\_da\*\*; sf -1,0



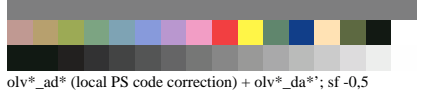
olv\*\_ad\* (local PS code correction) + olv\*\_da\*\*; sf -1,0



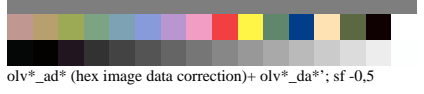
olv\*\_ad\* (hex image data correction)+ olv\*\_da\*\*; sf -1,0



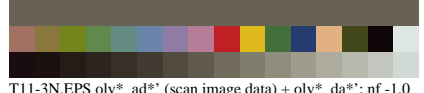
T10-4N.EPS olv\*\_ad\*\* (scan image data) + olv\*\_da\*\*; sf -0,5



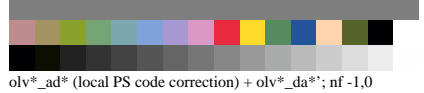
olv\*\_ad\* (local PS code correction) + olv\*\_da\*\*; sf -0,5



olv\*\_ad\* (hex image data correction)+ olv\*\_da\*\*; sf -0,5



T11-3N.EPS olv\*\_ad\*\* (scan image data) + olv\*\_da\*\*; nf -1,0



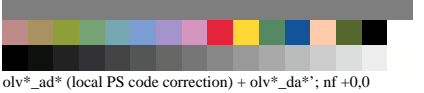
olv\*\_ad\* (local PS code correction) + olv\*\_da\*\*; nf -1,0



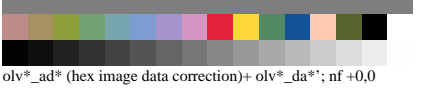
olv\*\_ad\* (hex image data correction)+ olv\*\_da\*\*; nf -1,0



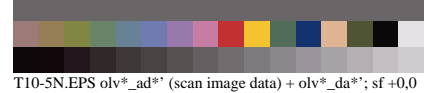
T11-4N.EPS olv\*\_ad\*\* (scan image data) + olv\*\_da\*\*; nf +0,0



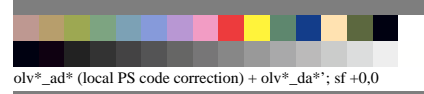
olv\*\_ad\* (local PS code correction) + olv\*\_da\*\*; nf +0,0



olv\*\_ad\* (hex image data correction)+ olv\*\_da\*\*; nf +0,0



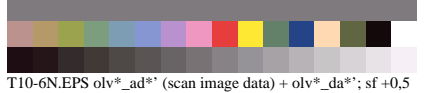
T10-5N.EPS olv\*\_ad\*\* (scan image data) + olv\*\_da\*\*; sf +0,0



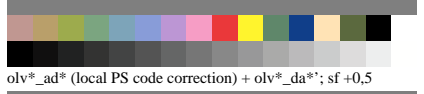
olv\*\_ad\* (local PS code correction) + olv\*\_da\*\*; sf +0,0



olv\*\_ad\* (hex image data correction)+ olv\*\_da\*\*; sf +0,0



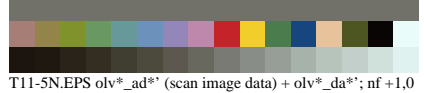
T10-6N.EPS olv\*\_ad\*\* (scan image data) + olv\*\_da\*\*; sf +0,5



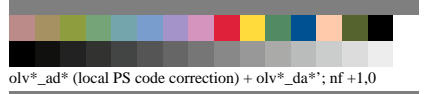
olv\*\_ad\* (local PS code correction) + olv\*\_da\*\*; sf +0,5



olv\*\_ad\* (hex image data correction)+ olv\*\_da\*\*; sf +0,5



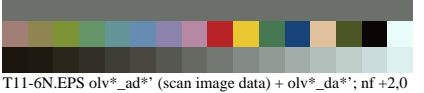
T11-5N.EPS olv\*\_ad\*\* (scan image data) + olv\*\_da\*\*; nf +1,0



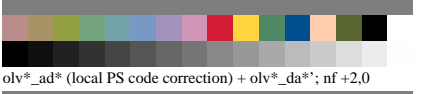
olv\*\_ad\* (local PS code correction) + olv\*\_da\*\*; nf +1,0



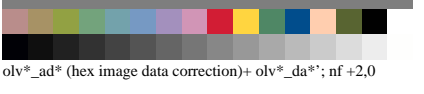
olv\*\_ad\* (hex image data correction)+ olv\*\_da\*\*; nf +1,0



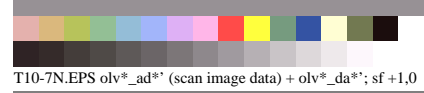
T11-6N.EPS olv\*\_ad\*\* (scan image data) + olv\*\_da\*\*; nf +2,0



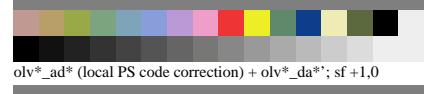
olv\*\_ad\* (local PS code correction) + olv\*\_da\*\*; nf +2,0



olv\*\_ad\* (hex image data correction)+ olv\*\_da\*\*; nf +2,0



T10-7N.EPS olv\*\_ad\*\* (scan image data) + olv\*\_da\*\*; sf +1,0



olv\*\_ad\* (local PS code correction) + olv\*\_da\*\*; sf +1,0



olv\*\_ad\* (hex image data correction)+ olv\*\_da\*\*; sf +1,0



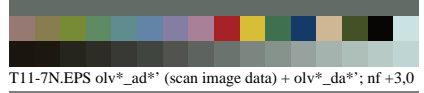
T10-8N.EPS olv\*\_ad\*\* (scan image data) + olv\*\_da\*\*; sf +1,5



olv\*\_ad\* (local PS code correction) + olv\*\_da\*\*; sf +1,5



olv\*\_ad\* (hex image data correction)+ olv\*\_da\*\*; sf +1,5



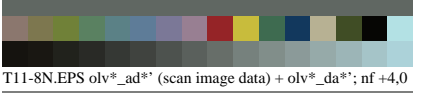
T11-7N.EPS olv\*\_ad\*\* (scan image data) + olv\*\_da\*\*; nf +3,0



olv\*\_ad\* (local PS code correction) + olv\*\_da\*\*; nf +3,0



olv\*\_ad\* (hex image data correction)+ olv\*\_da\*\*; nf +3,0



T11-8N.EPS olv\*\_ad\*\* (scan image data) + olv\*\_da\*\*; nf +4,0



olv\*\_ad\* (local PS code correction) + olv\*\_da\*\*; nf +4,0



olv\*\_ad\* (hex image data correction)+ olv\*\_da\*\*; nf +4,0

