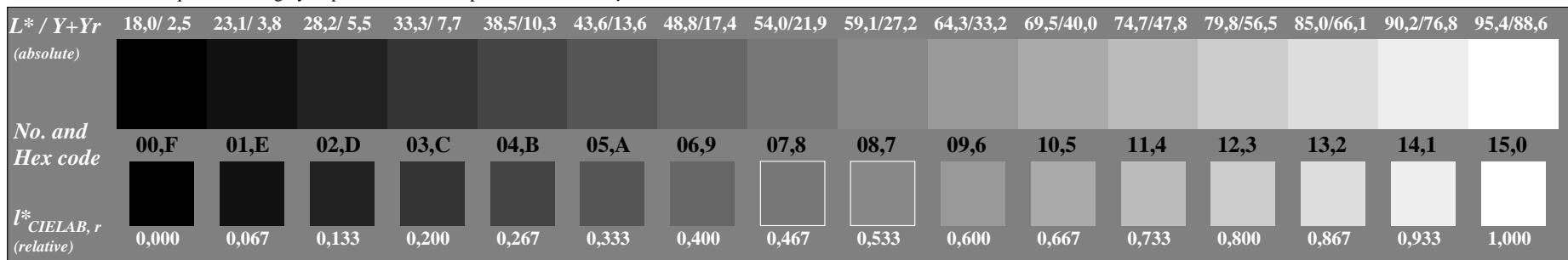
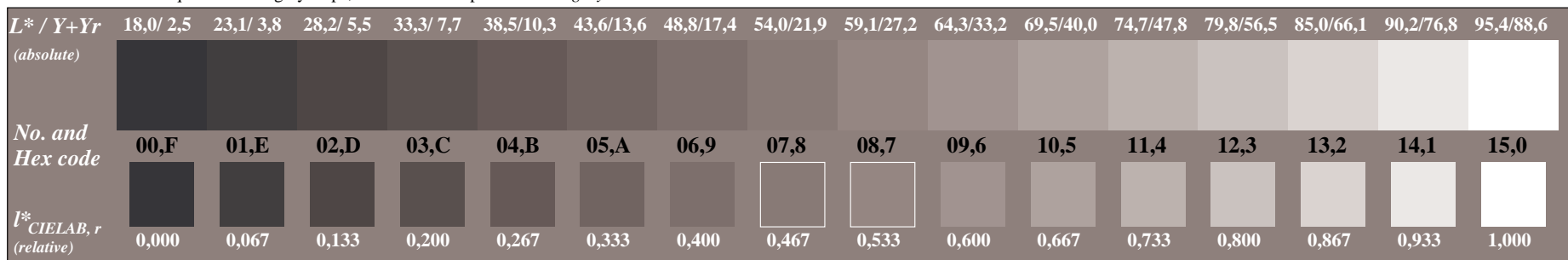


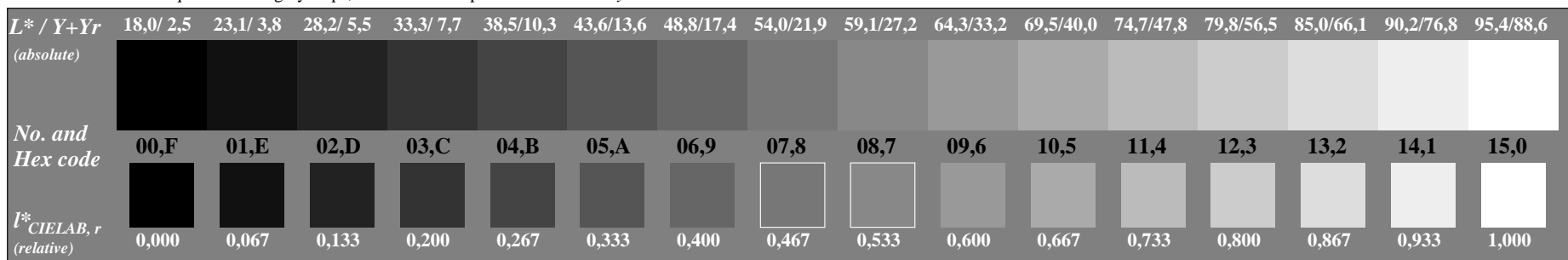
Picture C3: 16 visual equidistant L^* -grey steps; Use of the PS operator $000n^*$ setcmycolor



Picture C3: 16 visual equidistant L^* -grey steps; Use of the PS operator w^* setgray



Picture C3: 16 visual equidistant L^* -grey steps; Use of the PS operator $nmn0^*$ setcmycolor



Picture C3: 16 visual equidistant L^* -grey steps; Use of the PS operator www^* setrgbcolor

Fig. C3 of ISO/IEC-test chart no. 3;

ISO/IEC 15775 and input: mixture (m) of PS operators
 DIS ISO/IEC 19839-X; output: no change compared to input

See for similar files: <http://www.ps.bam.de/DE81/DE81.HTM>
 Information and Order: <http://www.ps.bam.de>
 Version 2.0, io=m,m

BAM registration: 20030101-DE81/10L/L81E00NP.PS/.PDF
 application for monitors and printers

BAM material: code=tha4ta