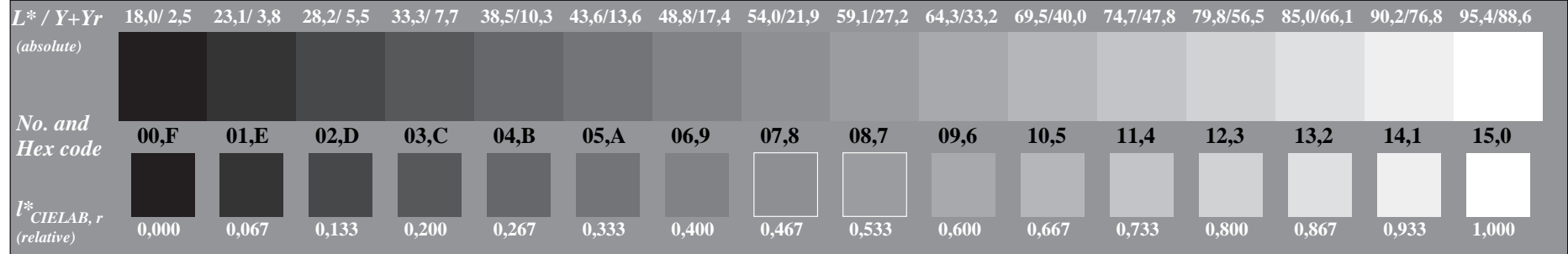


Information and Order: <http://www.ps.bam.de>

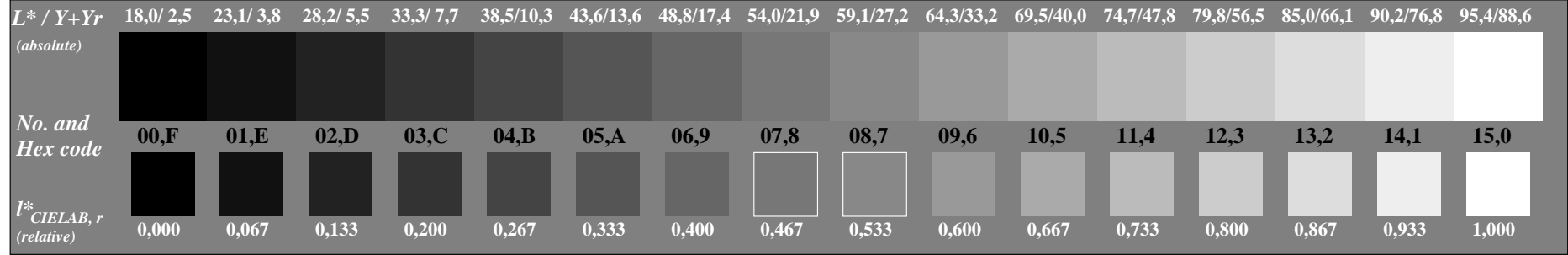
Image file version 1.9, 20020101-DE81

BAM registration: 20020101-DE81/10L/L81E00NP.PS/.PDF

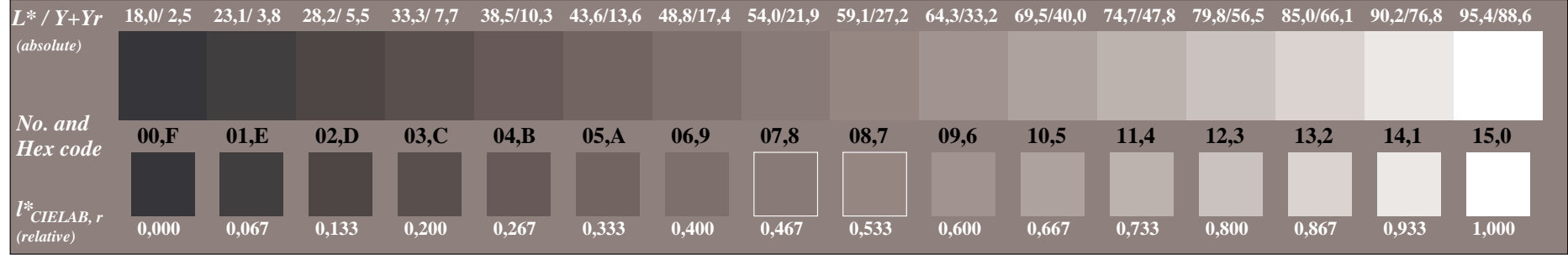
BAM material: code=rh41a



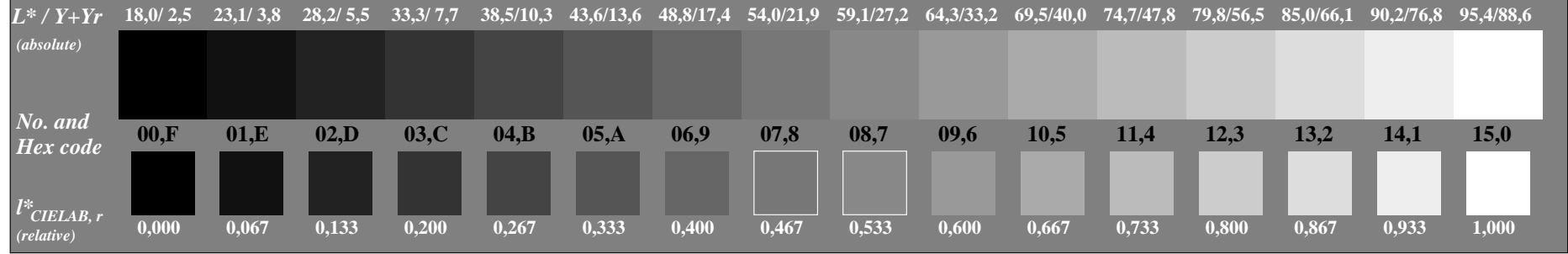
Picture C3: 16 visual equidistant  $L^*$ -grey steps; Use of the PS operator `000n* setcmycolor`



Picture C3: 16 visual equidistant  $L^*$ -grey steps; Use of the PS operator `w* setgray`



Picture C3: 16 visual equidistant  $L^*$ -grey steps; Use of the PS operator `nnn0* setcmycolor`



Picture C3: 16 visual equidistant  $L^*$ -grey steps; Use of the PS operator `www* setrgbcolor`

Fig. C3 of ISO/IEC-test chart no. 3; ISO/IEC 15775 and DIS ISO/IEC 19839-X; input: different, see figure text; output: different, see figure text