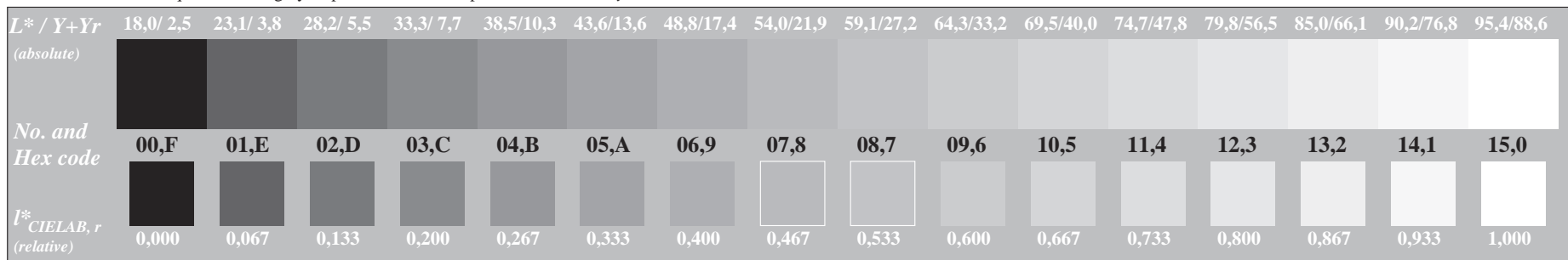
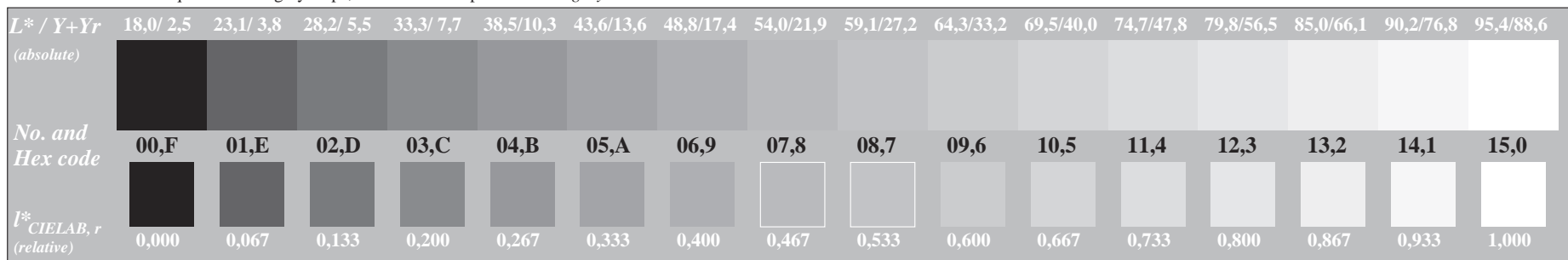


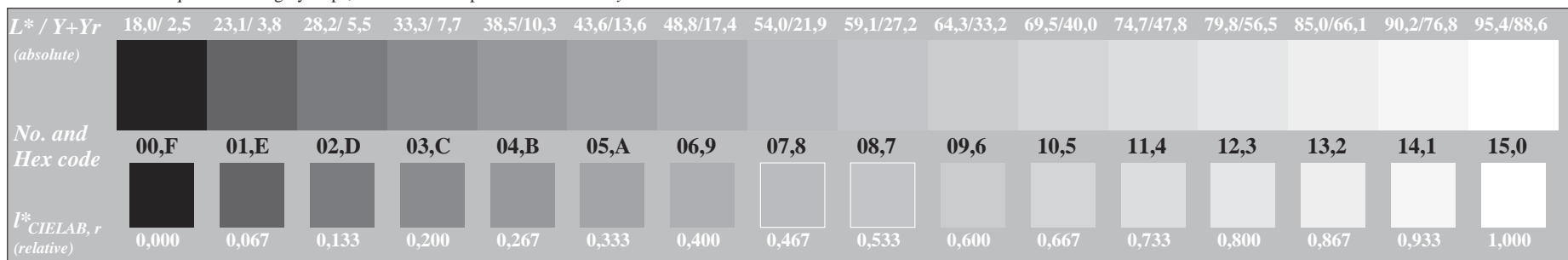
Picture C3: 16 visual equidistant  $L^*$ -grey steps; Use of the PS operator  $000n^*$  setcmykcolor



Picture C3: 16 visual equidistant  $L^*$ -grey steps; Use of the PS operator  $w^*$  setgray



Picture C3: 16 visual equidistant  $L^*$ -grey steps; Use of the PS operator  $nmn0^*$  setcmykcolor



Picture C3: 16 visual equidistant  $L^*$ -grey steps; Use of the PS operator  $www^*$  setrgbcolor