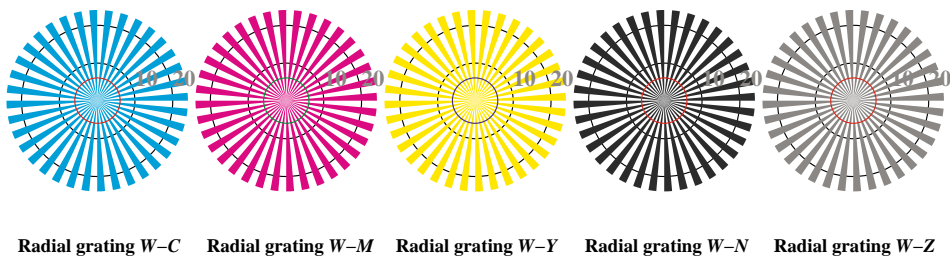


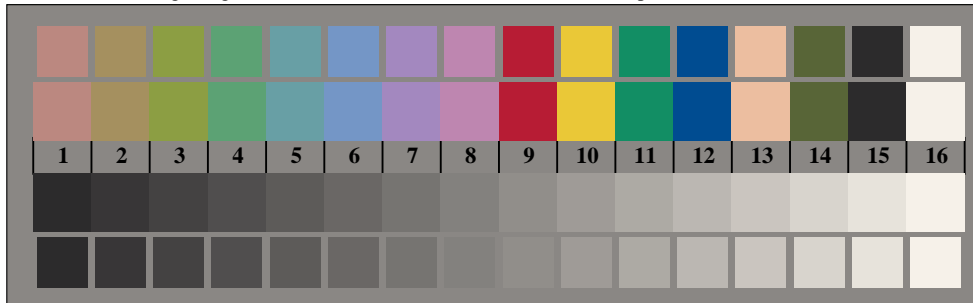
image pixel: 192 x 128  
 384 x 256  
 768 x 512  
 1536 x 1024  
 3072 x 2048



Picture B1: Flower motif, 14 CIE-test colours and 2 + 16 grey steps (sf); PS operators *settransfer*, 3 *colorimage*



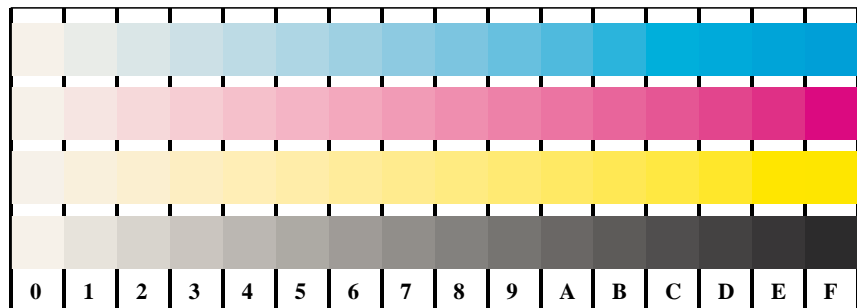
Picture D2: Radial gratings *W-O*, *W-L*, *W-V*, *W-N*, and *W-Z*; Use of PS operator *LAB\* setcolor*



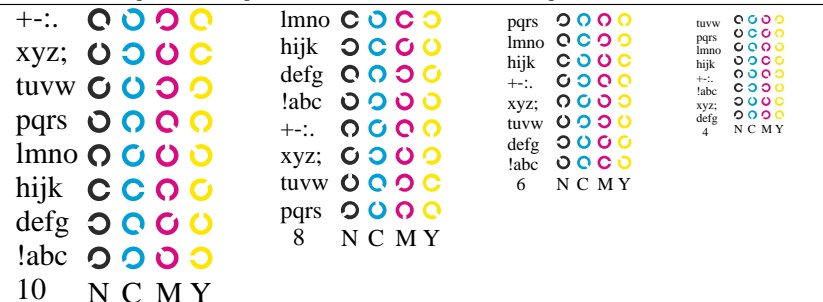
Picture B3: 14 CIE-test colours and 2 + 16 grey steps; Use of PS operator *LAB\* setcolor*

Fig. B1 to B7 of ISO/IEC-test chart 2;

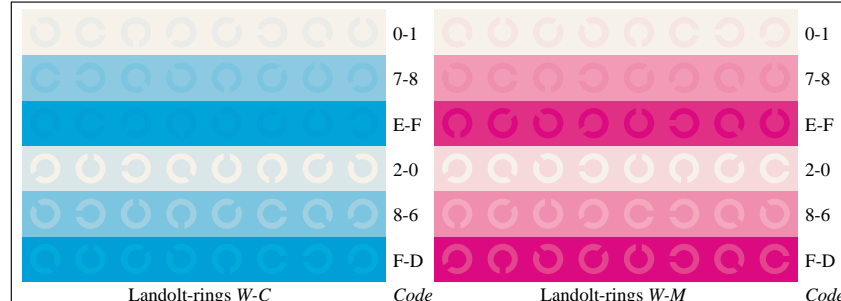
ISO/IEC 15775 and input: *LAB\* setcolor*  
 DIS ISO/IEC 19839-X; output: *Startup (S) data dependend*



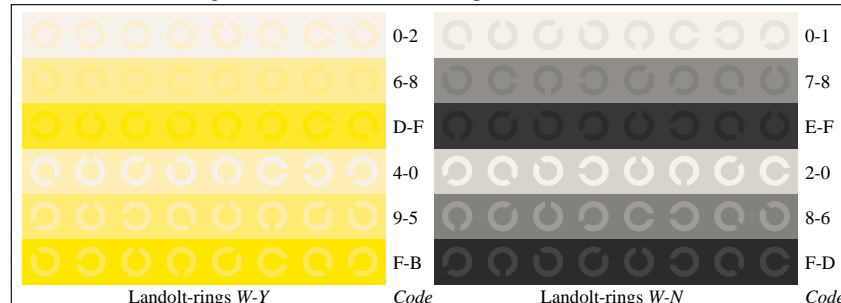
Picture B4: 16 equidistant steps *W-C*, *W-M*, *W-Y* and *W-N*; PS operator *LAB\* setcolor*



Picture D5: Script and Landolt-rings *N*, *C*, *M* and *Y*; Use of PS operator *LAB\* setcolor*



Picture B6: Landolt-rings *W-C* and *W-M*; Use of PS operator *LAB\* setcolor*



Picture B7: Landolt-rings *W-Y* and *W-N*; Use of PS operator *LAB\* setcolor*