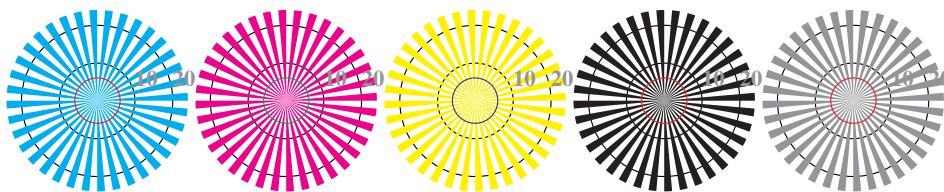


image pixel: 192 x 128  
 384 x 256  
 768 x 512  
 1536 x 1024  
 3072 x 2048

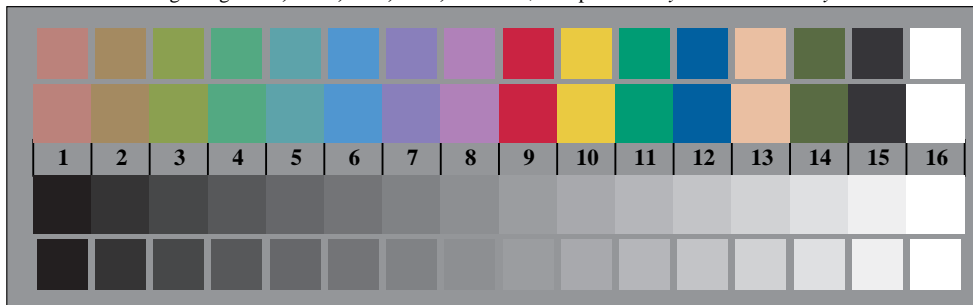


Picture B1: Flower motif, 14 CIE-test colours and 2 + 16 grey steps (sf); PS operators *settransfer*, *4 colorimage*



Radial grating W-C    Radial grating W-M    Radial grating W-Y    Radial grating W-N    Radial grating W-Z

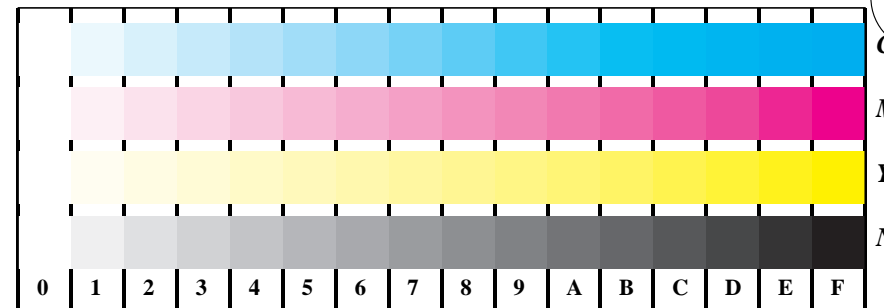
Picture B2: Radial gratings W-C, W-M, W-Y, W-N, and W-Z; PS operator *cmy0\*/000n\* setcmycolor*



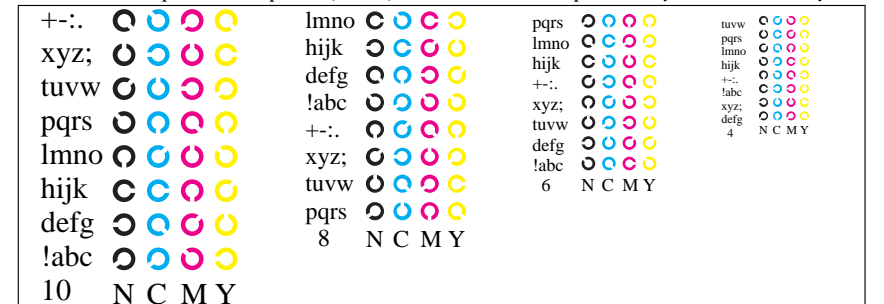
Picture B3: 14 CIE-test colours and 2 + 16 grey steps; Use of PS operator *cmy0\*/000n\* setcmycolor*

Fig. B1 to B7 of ISO/IEC-test chart 2;

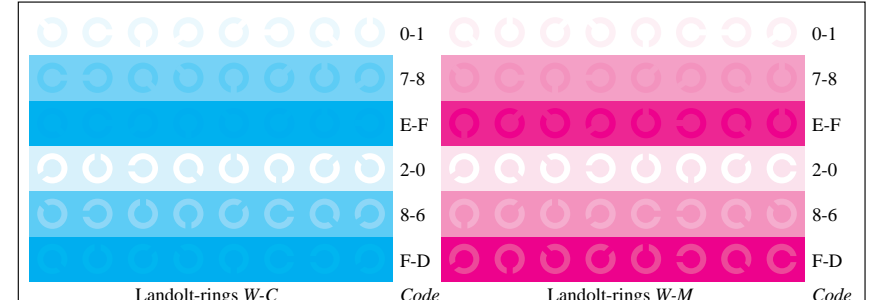
ISO/IEC 15775 and input: *cmy0\*/000n\* setcmycolor*  
 DIS ISO/IEC 19839-X; output: *Startup (S) data depend*



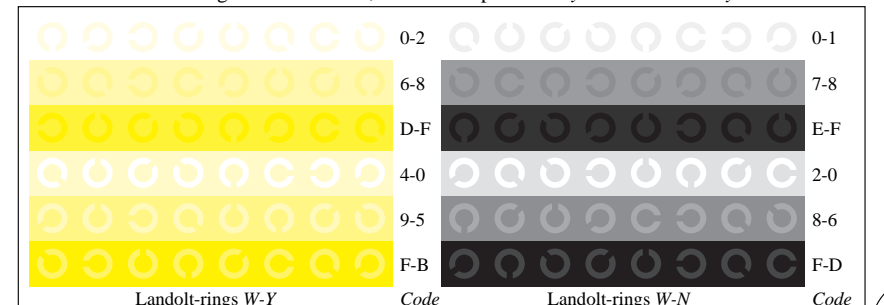
Picture B4: 16 equidistant steps W-C, W-M, W-Y and W-N; PS operator *cmy0\*/000n\* setcmycolor*



Picture B5: Script and Landolt-rings N, M, C and Y; Use of PS operator *cmy0\*/000n\* setcmycolor*



Picture B6: Landolt-rings W-C and W-M; Use of PS operator *cmy0\*/000n\* setcmycolor*



Picture B7: Landolt-rings W-Y and W-N; Use of PS operator *cmy0\*/000n\* setcmycolor*

BAM registration: 20030101-DE96/10F/F96E00SP.PS/.PDF  
 application for monitors (Yr=2.5) and printers  
 BAM material: code=tha4ta

See for similar files: <http://www.ps.bam.de/DE96/Information and Order: http://www.ps.bam.de>  
 Version 2.0, io=0,0?