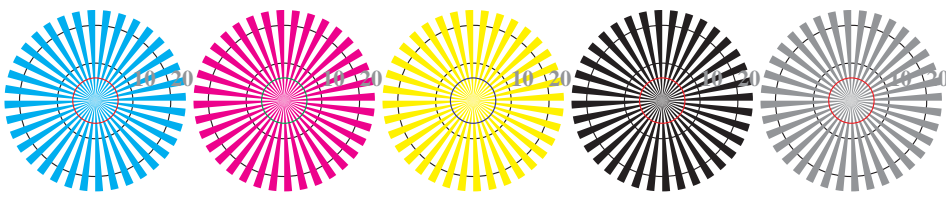


image pixel: 192 x 128
 384 x 256
 768 x 512
 1536 x 1024
 3072 x 2048



Picture B1: Flower motif, 14 CIE-test colours and 2 + 16 grey steps (sf); PS operators *settransfer*, *4 colorimage*



Radial grating W-C Radial grating W-M Radial grating W-Y Radial grating W-N Radial grating W-Z

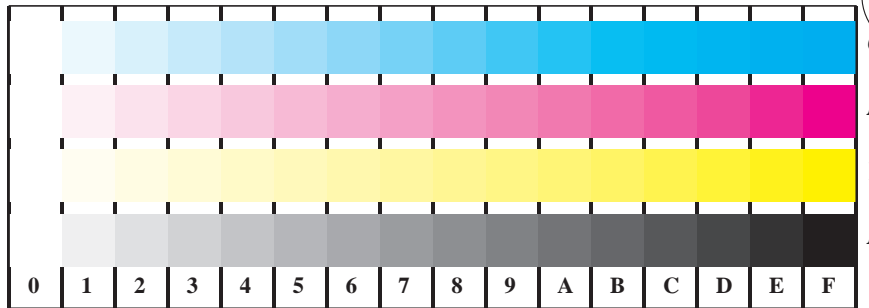
Picture B2: Radial gratings W-C, W-M, W-Y, W-N, and W-Z; PS operator *cmy0*/000n* setcmycolor*



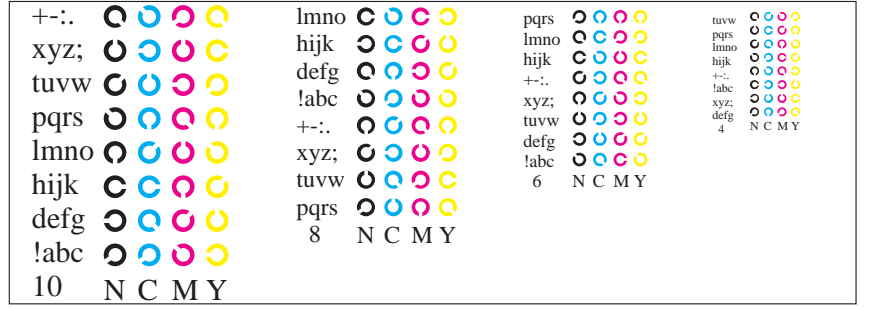
Picture B3: 14 CIE-test colours and 2 + 16 grey steps; Use of PS operator *cmy0*/000n* setcmycolor*

Fig. B1 to B7 of ISO/IEC-test chart 2;

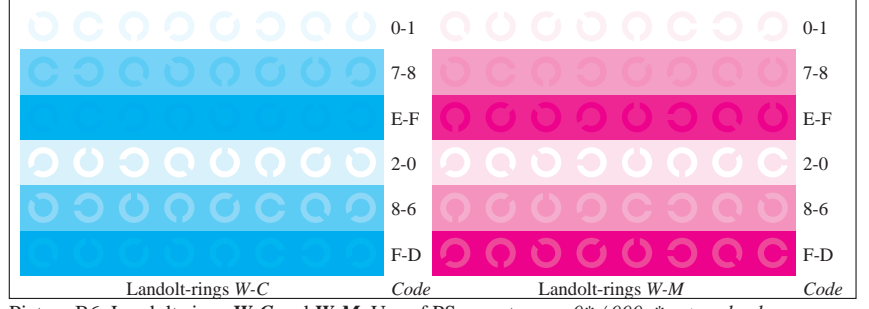
ISO/IEC 15775 and input: *cmy0*/000n* setcmycolor*
 DIS ISO/IEC 19839-X; output: *cmy0*/000n* setcmycolor*



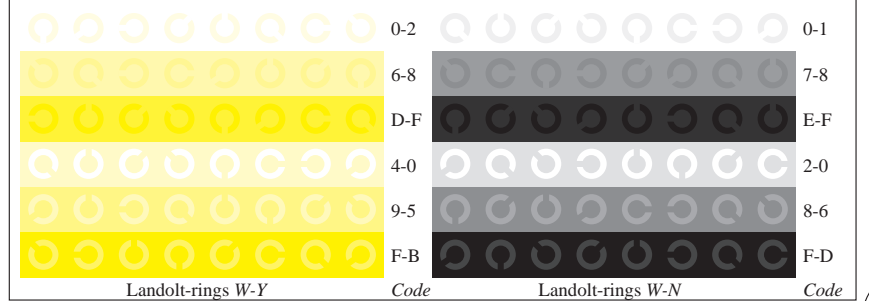
Picture B4: 16 equidistant steps W-C, W-M, W-Y and W-N; PS operator *cmy0*/000n* setcmycolor*



Picture B5: Script and Landolt-rings N, M, C and Y; Use of PS operator *cmy0*/000n* setcmycolor*



Picture B6: Landolt-rings W-C and W-M; Use of PS operator *cmy0*/000n* setcmycolor*



Picture B7: Landolt-rings W-Y and W-N; Use of PS operator *cmy0*/000n* setcmycolor*

BAM registration: 20030101-DE96/10L/L96E00FP.PS/.PDF application for monitors (Yr=2.5) and printers BAM material: code=th4ta

See for similar files: <http://www.ps.bam.de/DE96/10L/L96E00FP.PS/.PDF>; Information and Order: <http://www.ps.bam.de> Version 2.0, io=0,0; iORS; oORS, CIELAB