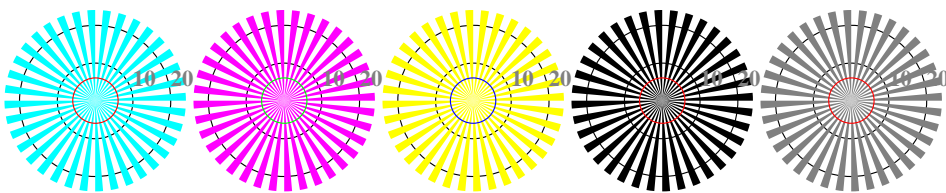


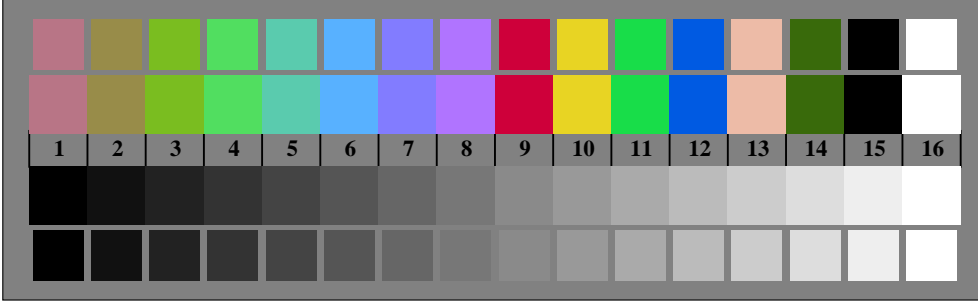
image pixel: 192 x 128
 384 x 256
 768 x 512
 1536 x 1024
 3072 x 2048



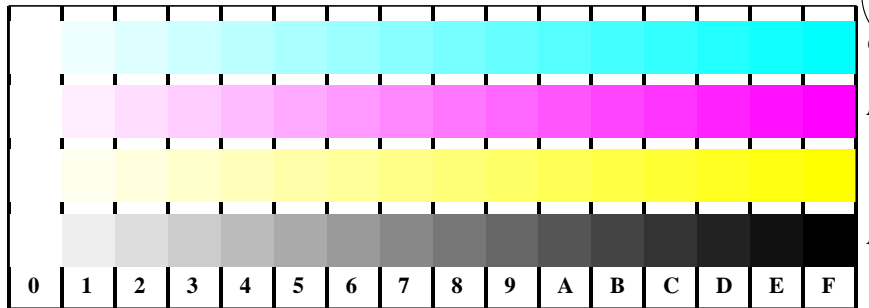
Picture B1: Flower motif, 14 CIE-test colours and 2 + 16 grey steps (sf); PS operators *settransfer*, 4 *colorimage*



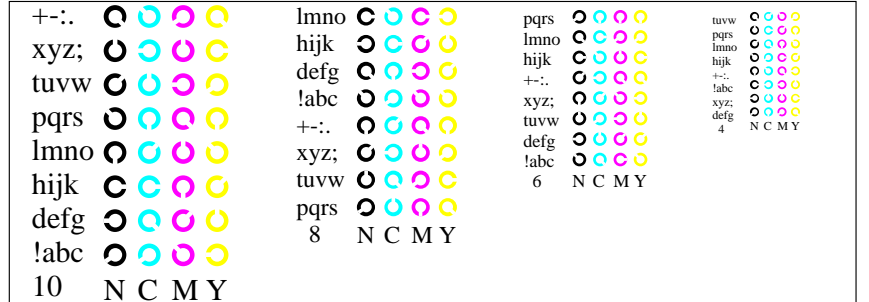
Picture B2: Radial gratings *W-C*, *W-M*, *W-Y*, *W-N*, and *W-Z*; PS operator *cmy0*/000n*setcmycolor*



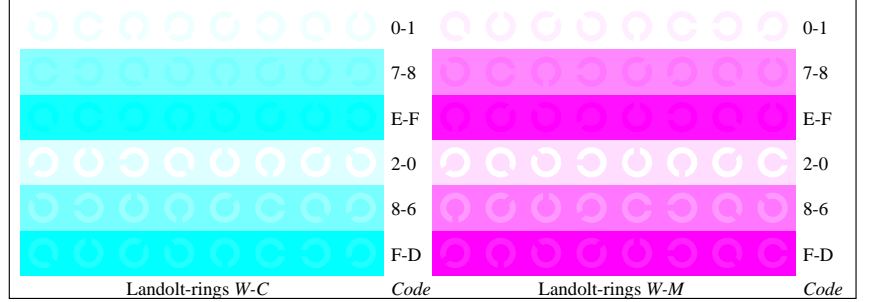
Picture B3: 14 CIE-test colours and 2 + 16 grey steps; Use of PS operator *cmy0*/000n*setcmycolor*



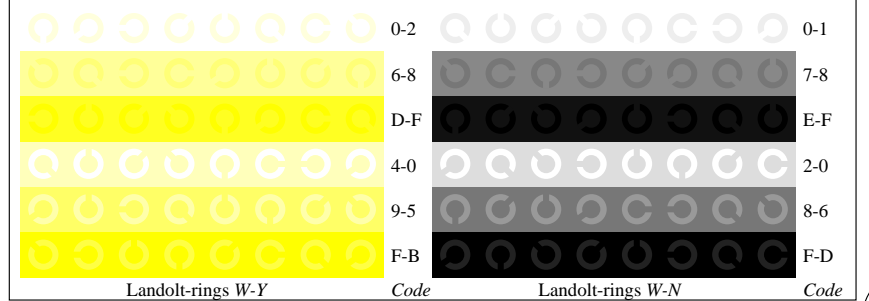
Picture B4: 16 equidistant steps *W-C*, *W-M*, *W-Y* and *W-N*; PS operator *cmy0*/000n*setcmycolor*



Picture B5: Script and Landolt-rings *N*, *M*, *C* and *Y*; Use of PS operator *cmy0*/000n*setcmycolor*



Picture B6: Landolt-rings *W-C* and *W-M*; Use of PS operator *cmy0*/000n*setcmycolor*



Picture B7: Landolt-rings *W-Y* and *W-N*; Use of PS operator *cmy0*/000n*setcmycolor*

See for similar files: <http://www.ps.bam.de/DE96/Information and Order: http://www.ps.bam.de>

Version 2.0, io=0,1; iORS; oORS, CIELAB

BAM registration: 20030101-DE96/10L/L96E01FP.PS/.PDF application for monitors (Yr=2.5) and printers BAM material: code=tha4ta