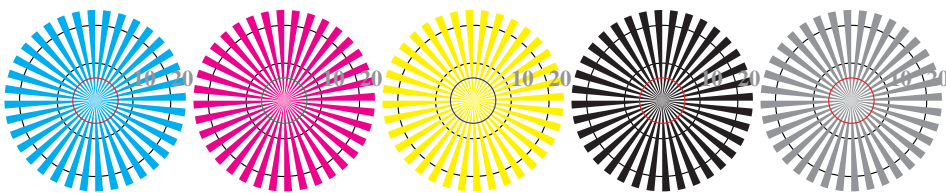


image pixel: 192 x 128
384 x 256
768 x 512
1536 x 1024
3072 x 2048



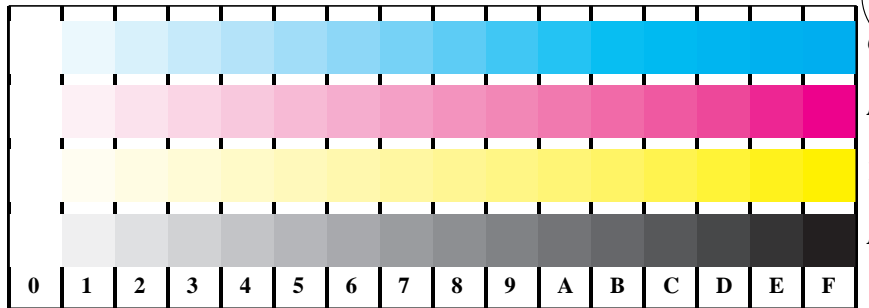
Picture B1: Flower motif, 14 CIE-test colours and 2 + 16 grey steps (sf); PS operators *settransfer*, *4 colorimage*



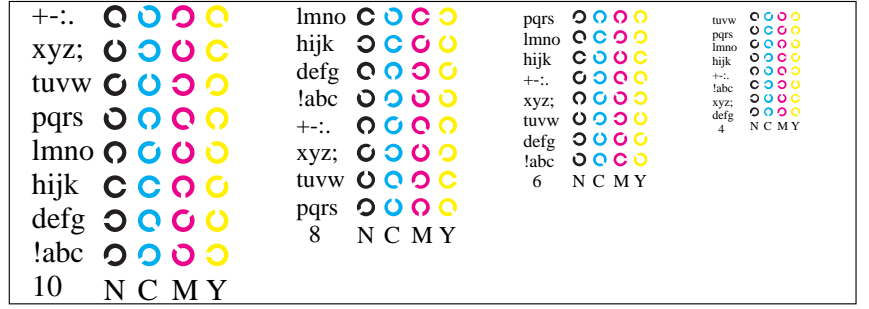
Picture B2: Radial gratings *W-C*, *W-M*, *W-Y*, *W-N*, and *W-Z*; PS operator *cmy0*/000n* setcmycolor*



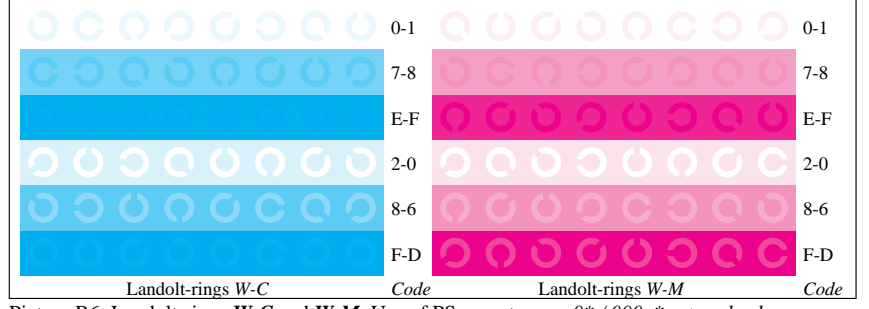
Picture B3: 14 CIE-test colours and 2 + 16 grey steps; Use of PS operator *cmy0*/000n* setcmycolor*



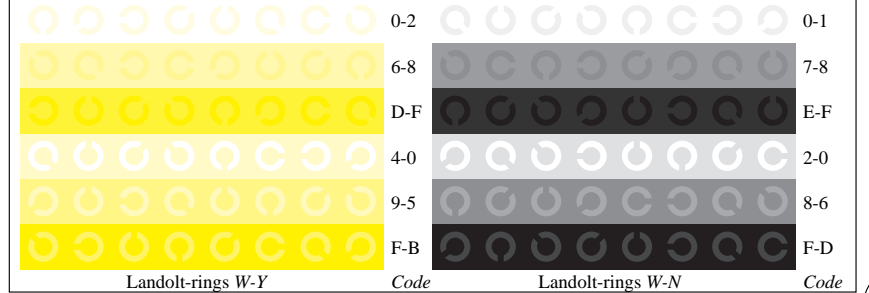
Picture B4: 16 equidistant steps *W-C*, *W-M*, *W-Y* and *W-N*; PS operator *cmy0*/000n* setcmycolor*



Picture B5: Script and Landolt-rings *N*, *M*, *C* and *Y*; Use of PS operator *cmy0*/000n* setcmycolor*



Picture B6: Landolt-rings *W-C* and *W-M*; Use of PS operator *cmy0*/000n* setcmycolor*



Picture B7: Landolt-rings *W-Y* and *W-N*; Use of PS operator *cmy0*/000n* setcmycolor*

Fig. B1 to B7 of ISO/IEC-test chart 2;

ISO/IEC 15775 and input: *cmy0*/000n* setcmycolor*
DIS ISO/IEC 19839-X; output: *Startup (S) data depend*

BAM registration: 20030101-DE96/10Q/Q96E07SP.PS/.PDF
application for monitors (Yr=2.5) and printers
BAM material: code=tha4ta

See for similar files: <http://www.ps.bam.de/DE96/Information and Order: http://www.ps.bam.de>
Version 2.0, io=0,0?