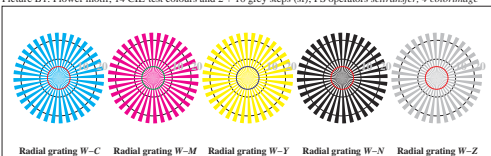


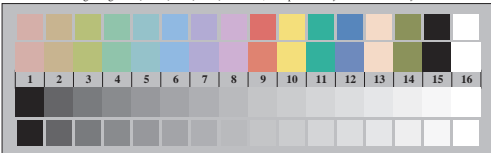
image pixel: 192 x 128
 384 x 256
 768 x 512
 1536 x 1024
 3072 x 2048



Picture B1: Flower motif, 14 CIE-test colours and 2 + 16 grey steps (sf); PS operators *settransfer*, *4 colorimage*



Picture B2: Radial gratings W-C, W-M, W-Y, W-N, and W-Z; PS operator *cmy0*/000n* setcmykcolor*

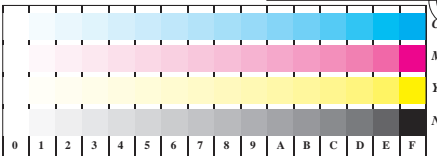


Picture B3: 14 CIE-test colours and 2 + 16 grey steps; Use of PS operator *cmy0*/000n* setcmykcolor*

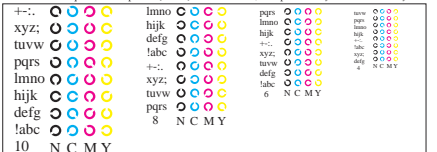
Fig. B1 to B7 of ISO/IEC-test chart 2;

ISO/IEC 15775 and
 DIS ISO/IEC 19839-X;

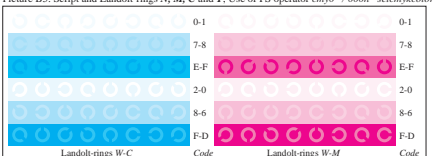
input: *cmy0*/000n* setcmykcolor*
 output: *cmy0*/000n* setcmykcolor*



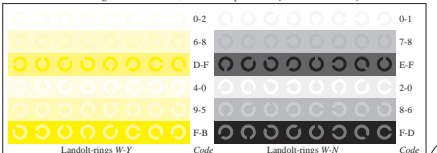
Picture B4: 16 equidistant steps W-C, W-M, W-Y and W-N; PS operator *cmy0*/000n* setcmykcolor*



Picture B5: Script and Landt-rings N, M, C and Y; Use of PS operator *cmy0*/000n* setcmykcolor*



Picture B6: Landt-rings W-C and W-M; Use of PS operator *cmy0*/000n* setcmykcolor*



Picture B7: Landt-rings W-Y and W-N; Use of PS operator *cmy0*/000n* setcmykcolor*