

Bildpixel: 192 x 128  
 384 x 256  
 768 x 512  
 1536 x 1024  
 3072 x 2048



Bild D1: Blumenmotiv, 14 CIE-Prüfbarben sowie 2 + 16 Graustufen (nf); PS-Operatoren *settransfer*, 3 *colorimage*

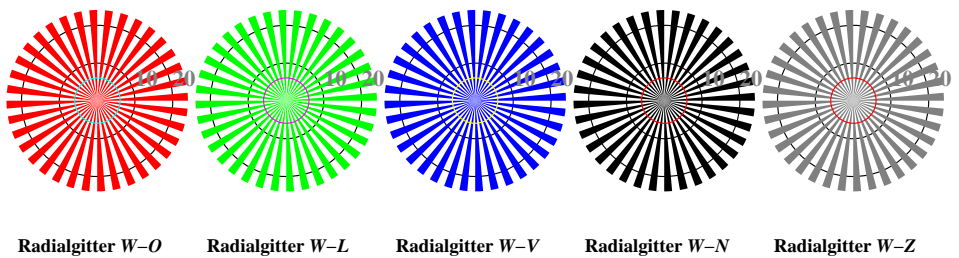


Bild D2: Radialgitter W-O, W-L, W-V, W-N und W-Z; PS-Operator *olv\* setrgbcolor (only)*

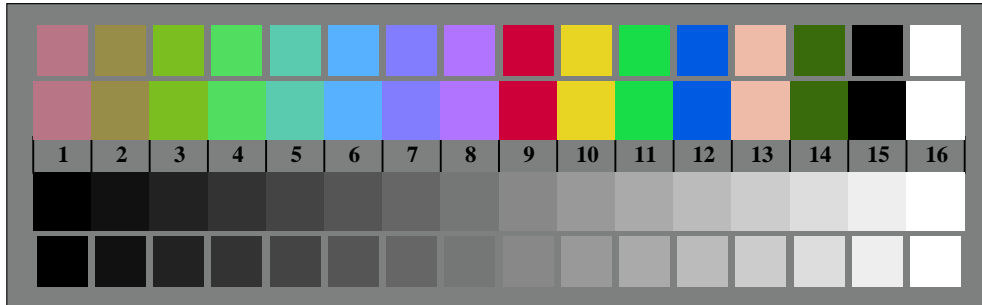


Bild D3: 14 CIE-Prüfbarben sowie 2 + 16 Graustufen; PS-Operator *olv\* setrgbcolor (only)*

Fig. D1 bis D7; ISO/IEC-Prüfvorlage 4;

ISO/IEC 15775 und input: *olv\* setrgbcolor (only)*  
 DIS ISO/IEC 19839-X; output: *Startup (S) data dependend*

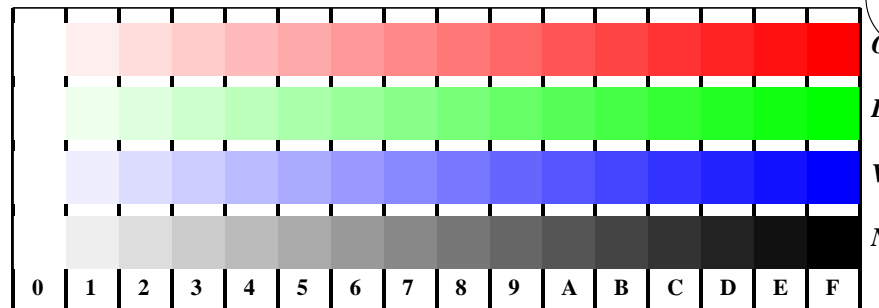


Bild D4: 16 gleichabständige Stufen W-O, W-L, W-V und W-N; PS-Operator *olv\* setrgbcolor (only)*

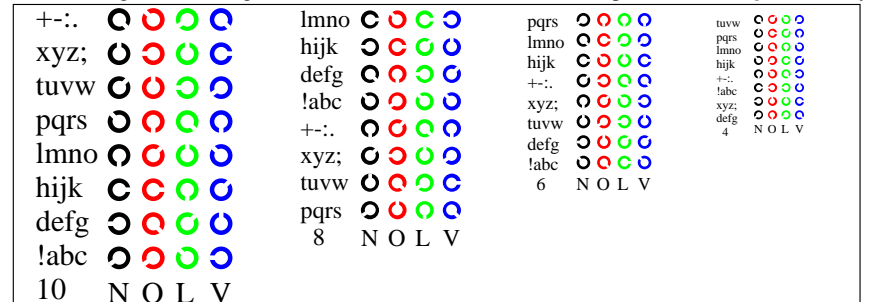


Bild D5: Schrift und Landoltringe N, O, L und V; PS-Operator *olv\* setrgbcolor (only)*

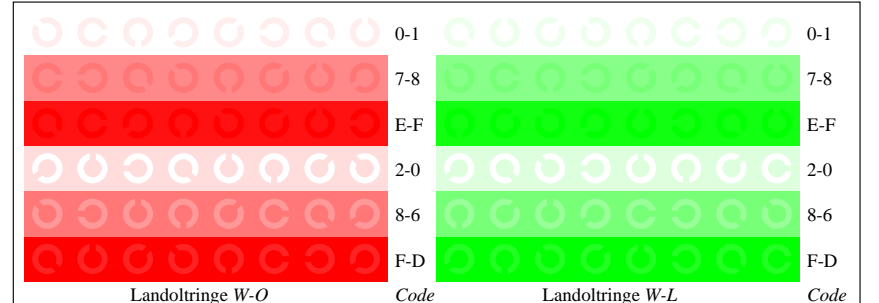


Bild D6: Landoltringe W-O und W-L; PS-Operator *olv\* setrgbcolor (only)*

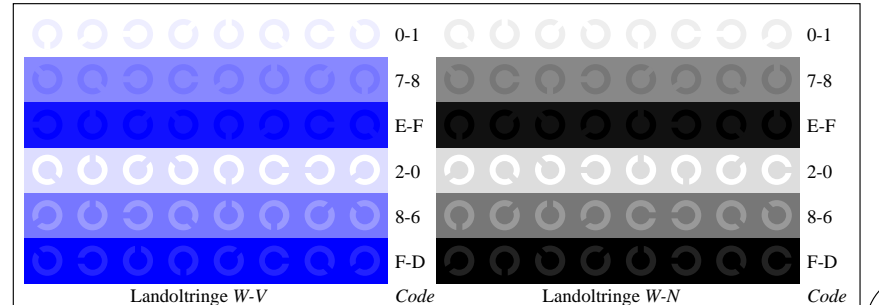


Bild D7: Landoltringe W-V und W-N; PS-Operator *olv\* setrgbcolor (only)*