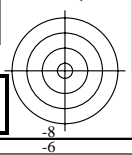
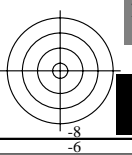
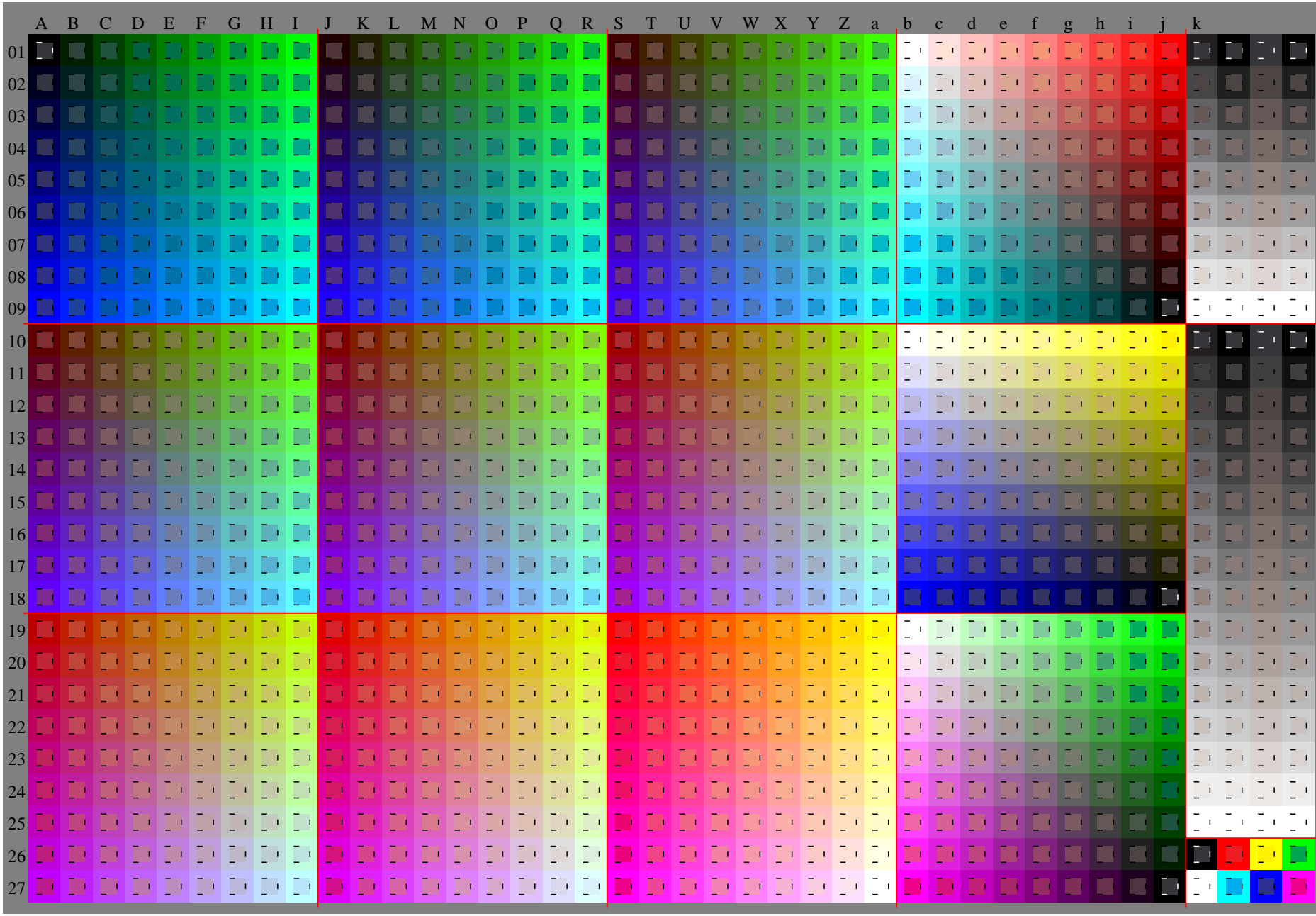
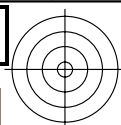
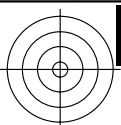


See for similar files: <http://www.ps.bam.de/Ge10/>; www.ps.bam.de/Ge10/; www.ps.bam.de/Ge10/
Technical information: <http://www.ps.bam.de> Version 2.1, io=1,1, ColSpX=0

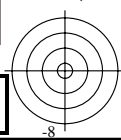
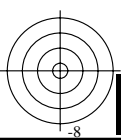
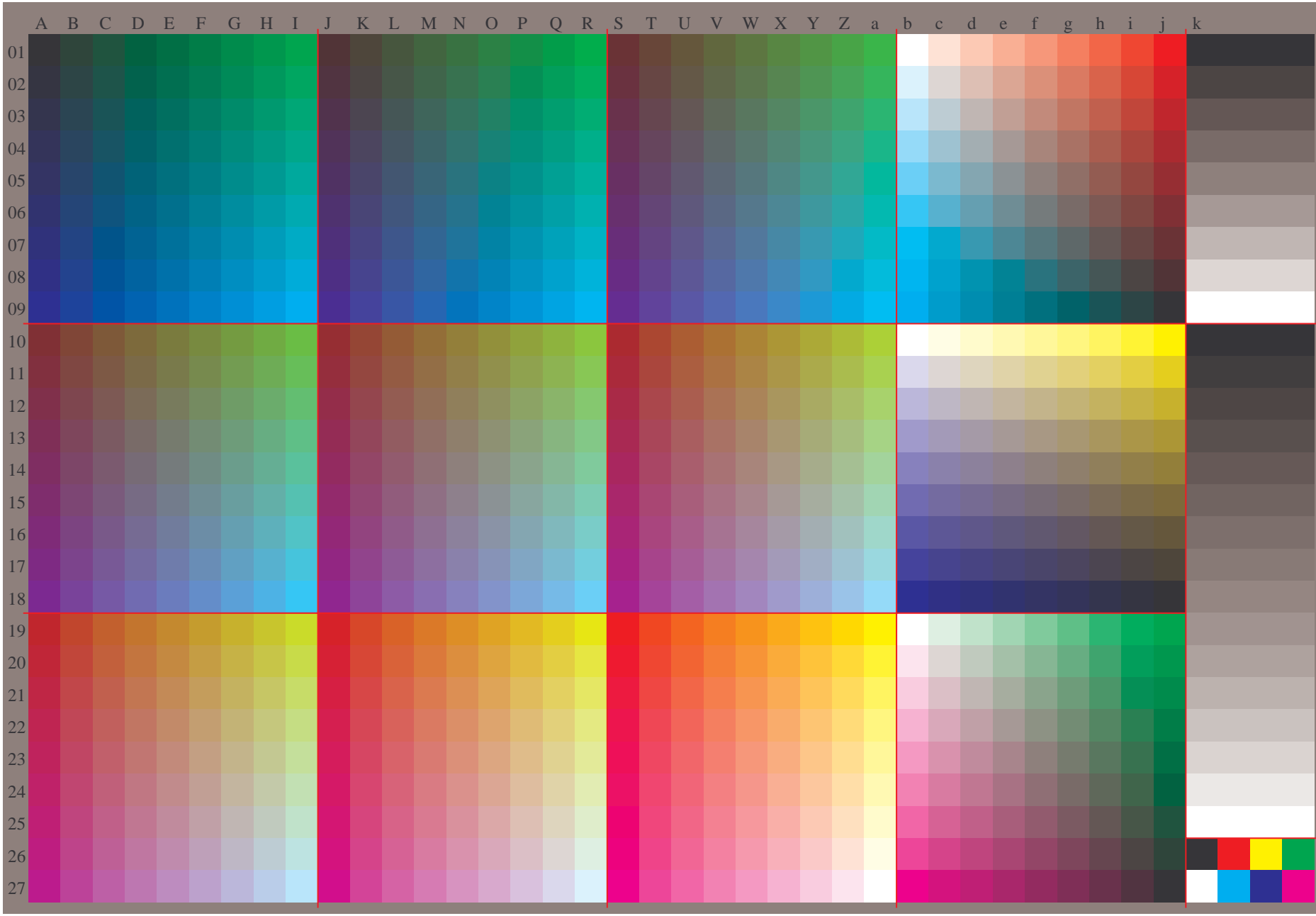
BAM registration: 20081201-Ge10/10L/L10e00NA.TXT/ .PS BAM material: code=rh4ta
application for evaluation and measurement of printer or monitor systems

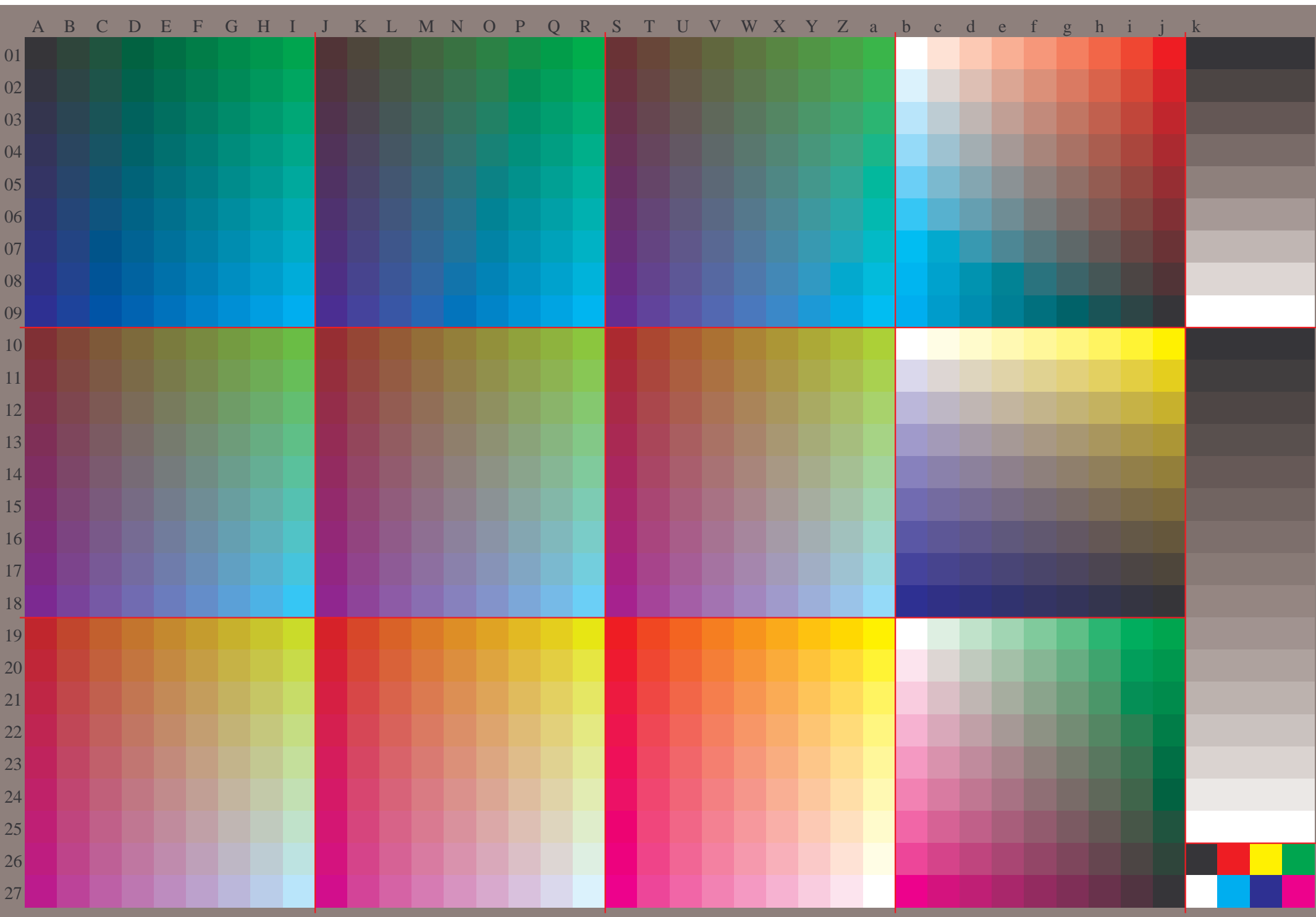




See for similar files: <http://www.ps.bam.de/Ge10/>; www.ps.bam.de/Ge10/
Technical information: <http://www.ps.bam.de> Version 2.1, io=1,1, ColSpX=0

BAM registration: 20081201-Ge10/10L/L10e00NA.TXT/ .PS BAM material: code=rh4ta
application for evaluation and measurement of printer or monitor systems





	A	B	C	D	E	F	G	H	I	J	K	L	M	N	O	P	Q	R	S	T	U	V	W	X	Y	Z	a	b	c	d	e	f	g	h	i	j	k	lab*rgb*						
01	0.0	0.02	0.03	0.05	0.06	0.08	0.09	0.11	0.12	0.13	0.12	0.14	0.15	0.17	0.19	0.2	0.22	0.23	0.25	0.25	0.25	0.26	0.28	0.29	0.31	0.32	0.34	1.0	1.0	1.0	1.0	1.0	1.0	1.0	1.0	1.0	1.0	0.0	0.0	0.0	0.0			
02	0.0	0.1	0.25	0.38	0.5	0.63	0.75	0.88	1.0	0.0	0.13	0.14	0.16	0.17	0.19	0.2	0.22	0.23	0.25	0.25	0.25	0.26	0.28	0.3	0.31	0.33	0.34	0.88	0.88	0.88	0.88	0.88	0.88	0.88	0.88	0.88	0.88	0.13	0.13	0.13	0.13			
03	0.09	0.0	0.0	0.0	0.0	0.0	0.0	0.0	0.0	0.26	0.17	0.13	0.13	0.13	0.13	0.13	0.13	0.13	0.25	0.25	0.25	0.27	0.28	0.3	0.31	0.33	0.34	0.75	0.75	0.75	0.75	0.75	0.75	0.75	0.75	0.75	0.75	0.75	0.25	0.25	0.25	0.25		
04	0.13	0.0	0.0	0.0	0.0	0.0	0.0	0.0	0.0	0.27	0.21	0.13	0.13	0.13	0.13	0.13	0.13	0.13	0.38	0.35	0.29	0.25	0.25	0.25	0.25	0.25	0.25	0.63	0.63	0.63	0.63	0.63	0.63	0.63	0.63	0.63	0.63	0.38	0.38	0.38	0.38			
05	0.18	0.04	0.0	0.0	0.0	0.0	0.0	0.0	0.0	0.32	0.26	0.13	0.13	0.13	0.13	0.13	0.13	0.13	0.46	0.4	0.34	0.25	0.25	0.25	0.25	0.25	0.25	0.5	0.5	0.5	0.5	0.5	0.5	0.5	0.5	0.5	0.5	0.5	0.5	0.5	0.5			
06	0.22	0.09	0.0	0.0	0.0	0.0	0.0	0.0	0.0	0.36	0.3	0.17	0.13	0.13	0.13	0.13	0.13	0.13	0.5	0.44	0.38	0.25	0.25	0.25	0.25	0.25	0.25	0.38	0.38	0.38	0.38	0.38	0.38	0.38	0.38	0.38	0.38	0.38	0.63	0.63	0.63	0.63		
07	0.27	0.13	0.0	0.0	0.0	0.0	0.0	0.0	0.0	0.41	0.35	0.21	0.13	0.13	0.13	0.13	0.13	0.13	0.55	0.49	0.43	0.29	0.25	0.25	0.25	0.25	0.25	0.25	0.25	0.25	0.25	0.25	0.25	0.25	0.25	0.25	0.25	0.25	0.75	0.75	0.75	0.75		
08	0.31	0.18	0.04	0.0	0.0	0.0	0.0	0.0	0.0	0.45	0.39	0.26	0.13	0.13	0.13	0.13	0.13	0.13	0.59	0.53	0.47	0.34	0.25	0.25	0.25	0.25	0.25	0.13	0.13	0.13	0.13	0.13	0.13	0.13	0.13	0.13	0.13	0.88	0.88	0.88	0.88			
09	0.36	0.22	0.08	0.0	0.0	0.0	0.0	0.0	0.0	0.5	0.44	0.3	0.16	0.13	0.13	0.13	0.13	0.13	0.64	0.58	0.52	0.38	0.25	0.25	0.25	0.25	0.25	0.0	0.0	0.0	0.0	0.0	0.0	0.0	0.0	0.0	0.0	1.0	1.0	1.0	1.0			
10	0.38	0.38	0.38	0.37	0.39	0.4	0.42	0.43	0.45	0.5	0.5	0.5	0.5	0.5	0.5	0.5	0.5	0.5	0.63	0.63	0.63	0.63	0.63	0.63	0.62	0.64	0.65	0.67	1.0	1.0	1.0	1.0	1.0	1.0	1.0	1.0	1.0	1.0	0.99	0.99	0.0	0.0		
11	0.38	0.38	0.38	0.37	0.39	0.4	0.42	0.43	0.45	0.5	0.5	0.5	0.5	0.5	0.5	0.5	0.5	0.5	0.63	0.63	0.63	0.63	0.63	0.62	0.64	0.65	0.67	0.92	0.88	0.87	0.87	0.87	0.87	0.87	0.87	0.87	0.87	0.87	0.70	0.70	0.70	0.70		
12	0.38	0.38	0.38	0.37	0.39	0.4	0.42	0.44	0.45	0.5	0.5	0.5	0.5	0.5	0.5	0.5	0.5	0.5	0.63	0.63	0.63	0.63	0.63	0.62	0.64	0.65	0.67	0.84	0.79	0.75	0.75	0.75	0.75	0.75	0.75	0.75	0.75	0.75	0.75	0.13	0.13	0.13	0.13	
13	0.38	0.38	0.38	0.38	0.39	0.41	0.42	0.44	0.45	0.5	0.5	0.5	0.5	0.5	0.5	0.5	0.5	0.5	0.63	0.63	0.63	0.63	0.63	0.62	0.64	0.65	0.67	0.76	0.71	0.67	0.63	0.62	0.62	0.62	0.62	0.62	0.62	0.2	0.2	0.2	0.2			
14	0.5	0.5	0.42	0.42	0.38	0.38	0.38	0.38	0.38	0.5	0.5	0.5	0.5	0.5	0.5	0.5	0.5	0.5	0.63	0.63	0.63	0.63	0.63	0.62	0.64	0.65	0.67	0.68	0.63	0.59	0.54	0.5	0.5	0.5	0.5	0.5	0.5	0.5	0.5	0.5	0.27	0.27	0.27	0.27
15	0.63	0.58	0.52	0.46	0.38	0.38	0.38	0.38	0.38	0.63	0.63	0.63	0.6	0.54	0.5	0.5	0.5	0.5	0.63	0.63	0.63	0.63	0.63	0.63	0.64	0.66	0.67	0.6	0.55	0.51	0.46	0.42	0.38	0.37	0.37	0.37	0.33	0.33	0.33	0.33				
16	0.69	0.63	0.57	0.51	0.38	0.38	0.38	0.38	0.38	0.75	0.75	0.75	0.65	0.59	0.5	0.5	0.5	0.5	0.75	0.75	0.75	0.75	0.75	0.75	0.75	0.75	0.75	0.52	0.47	0.43	0.38	0.34	0.29	0.25	0.25	0.25	0.25	0.4	0.4	0.4	0.4			
17	0.73	0.67	0.61	0.55	0.42	0.38	0.38	0.38	0.38	0.88	0.88	0.88	0.88	0.88	0.88	0.88	0.88	0.88	0.88	0.88	0.88	0.88	0.88	0.88	0.88	0.88	0.88	0.44	0.39	0.35	0.3	0.26	0.21	0.17	0.13	0.12	0.47	0.47	0.47	0.47				
18	0.88	0.88	0.88	0.88	0.88	0.88	0.88	0.88	0.88	0.88	0.88	0.88	0.88	0.88	0.88	0.88	0.88	0.88	0.88	0.88	0.88	0.88	0.88	0.88	0.88	0.88	0.88	0.13	0.13	0.13	0.13	0.13	0.13	0.13	0.13	0.13	0.13	0.13	0.13	0.13	0.47	0.47	0.47	0.47
19	0.75	0.75	0.75	0.75	0.75	0.75	0.75	0.75	0.75	0.88	0.88	0.88	0.88	0.88	0.88	0.88	0.88	0.88	0.88	0.88	0.88	0.88	0.88	0.88	0.88	0.88	0.88	0.88	0.88	0.88	0.88	0.88	0.88	0.88	0.88	0.88	0.88	0.88	0.88	0.88	0.88	0.88		
20	0.01	0.19	0.3	0.41	0.53	0.64	0.75	0.88	1.0	0.0	0.2	0.31	0.43	0.54	0.65	0.77	0.88	1.0	0.0	0.21	0.33	0.44	0.55	0.67	0.78	0.89	1.0	1.0	1.0	1.0	1.0	1.0	1.0	1.0	1.0	1.0	1.0	1.0	1.0	1.0	1.0	1.0		
21	0.75	0.75	0.75	0.75	0.75	0.75	0.75	0.75	0.75	0.88	0.88	0.88	0.88	0.88	0.88	0.88	0.88	0.88	0.88	0.88	0.88	0.88	0.88	0.88	0.88	0.88	0.88	0.88	0.88	0.88	0.88	0.88	0.88	0.88	0.88	0.88	0.88	0.88	0.88	0.88	0.88	0.88		
22	0.75	0.75	0.75	0.75	0.75	0.75	0.75	0.75	0.75	0.88	0.88	0.88	0.88	0.88	0.88	0.88	0.88	0.88	0.88	0.88	0.88	0.88	0.88	0.88	0.88	0.88	0.88	0.88	0.88	0.88	0.88	0.88	0.88	0.88	0.88	0.88	0.88	0.88	0.88	0.88	0.88	0.88		
23	0.75	0.75	0.75	0.75	0.75	0.75	0.75	0.75	0.75	0.88	0.88	0.88	0.88	0.88	0.88	0.88	0.88	0.88	0.88	0.88	0.88	0.88	0.88	0.88	0.88	0.88	0.88	0.88	0.88	0.88	0.88	0.88	0.88	0.88	0.88	0.88	0.88	0.88	0.88	0.88	0.88	0.88		
24	0.75	0.75	0.75	0.75	0.75	0.75	0.75	0.75	0.75	0.88	0.88	0.88	0.88	0.88	0.88	0.88	0.88	0.88	0.88	0.88	0.88	0.88	0.88	0.88	0.88	0.88	0.88	0.88	0.88	0.88	0.88	0.88	0.88	0.88	0.88	0.88	0.88	0.88	0.88	0.88	0.88	0.88		
25	0.0	0.13	0.25	0.38	0.5	0.63	0.75	0.88	1.0	0.0	0.13	0.25	0.38	0.5	0.63	0.75	0.88	1.0	0.0	0.13	0.25	0.38	0.5	0.63	0.75	0.88	1.0	1.0	1.0	1.0	1.0	1.0	1.0	1.0	1.0	1.0	1.0	1.0	1.0	1.0	1.0	1.0		
26	0.88	0.88	0.88	0.88	0.88	0.88	0.88	0.88	0.88	0.88	0.88	0.88	0.88	0.88	0.88	0.88	0.88	0.88	0.88	0.88	0.88	0.88	0.88	0.88	0.88	0.88	0.88	0.88	0.88	0.88	0.88	0.88	0.88	0.88	0.88	0.88	0.88	0.88	0.88	0.88	0.88	0.88		
27	1.0	1.0	1.0	1.0	1.0	1.0	1.0	1.0	1.0	1.0	1.0	1.0	1.0	1.0	1.0	1.0	1.0	1.0	1.0	1.0	1.0	1.0	1.0	1.0	1.0	1.0	1.0	1.0	1.0	1.0	1.0	1.0	1.0	1.0	1.0	1.0	1.0	1.0	1.0	1.0	1.0	1.0		

	A	B	C	D	E	F	G	H	I	J	K	L	M	N	O	P	Q	R	S	T	U	V	W	X	Y	Z	a	b	c	d	e	f	g	h	i	j	k	LAB*LCH*a																																																																																																																																																																																																																																																																																																																																																																																																																																																																																																																																																																																																																																																																																																																																																																																																																																																																																																																																																																																																																																																																																																																															
01	20.4	24.5	28.7	32.8	36.9	41.1	45.2	49.3	53.5	57.6	61.8	65.9	70.1	74.2	78.3	82.4	86.5	90.6	94.7	98.8	102.9	107.0	111.1	115.2	119.3	123.4	127.5	131.6	135.7	139.8	143.9	148.0	152.1	156.2	160.3	164.4	168.5	172.6	176.7	180.8	184.9	189.0	193.1	197.2	201.3	205.4	209.5	213.6	217.7	221.8	225.9	230.0	234.1	238.2	242.3	246.4	250.5	254.6	258.7	262.8	266.9	271.0	275.1	279.2	283.3	287.4	291.5	295.6	299.7	303.8	307.9	312.0	316.1	320.2	324.3	328.4	332.5	336.6	340.7	344.8	348.9	353.0	357.1	361.2	365.3	369.4	373.5	377.6	381.7	385.8	389.9	394.0	398.1	402.2	406.3	410.4	414.5	418.6	422.7	426.8	430.9	435.0	439.1	443.2	447.3	451.4	455.5	459.6	463.7	467.8	471.9	476.0	480.1	484.2	488.3	492.4	496.5	500.6	504.7	508.8	512.9	517.0	521.1	525.2	529.3	533.4	537.5	541.6	545.7	549.8	553.9	558.0	562.1	566.2	570.3	574.4	578.5	582.6	586.7	590.8	594.9	599.0	603.1	607.2	611.3	615.4	619.5	623.6	627.7	631.8	635.9	640.0	644.1	648.2	652.3	656.4	660.5	664.6	668.7	672.8	676.9	681.0	685.1	689.2	693.3	697.4	701.5	705.6	709.7	713.8	717.9	722.0	726.1	730.2	734.3	738.4	742.5	746.6	750.7	754.8	758.9	763.0	767.1	771.2	775.3	779.4	783.5	787.6	791.7	795.8	799.9	804.0	808.1	812.2	816.3	820.4	824.5	828.6	832.7	836.8	840.9	845.0	849.1	853.2	857.3	861.4	865.5	869.6	873.7	877.8	881.9	886.0	890.1	894.2	898.3	902.4	906.5	910.6	914.7	918.8	922.9	927.0	931.1	935.2	939.3	943.4	947.5	951.6	955.7	959.8	963.9	968.0	972.1	976.2	980.3	984.4	988.5	992.6	996.7	1000.8	1004.9	1009.0	1013.1	1017.2	1021.3	1025.4	1029.5	1033.6	1037.7	1041.8	1045.9	1050.0	1054.1	1058.2	1062.3	1066.4	1070.5	1074.6	1078.7	1082.8	1086.9	1091.0	1095.1	1099.2	1103.3	1107.4	1111.5	1115.6	1119.7	1123.8	1127.9	1132.0	1136.1	1140.2	1144.3	1148.4	1152.5	1156.6	1160.7	1164.8	1168.9	1173.0	1177.1	1181.2	1185.3	1189.4	1193.5	1197.6	1201.7	1205.8	1209.9	1214.0	1218.1	1222.2	1226.3	1230.4	1234.5	1238.6	1242.7	1246.8	1250.9	1255.0	1259.1	1263.2	1267.3	1271.4	1275.5	1279.6	1283.7	1287.8	1291.9	1296.0	1300.1	1304.2	1308.3	1312.4	1316.5	1320.6	1324.7	1328.8	1332.9	1337.0	1341.1	1345.2	1349.3	1353.4	1357.5	1361.6	1365.7	1369.8	1373.9	1378.0	1382.1	1386.2	1390.3	1394.4	1398.5	1402.6	1406.7	1410.8	1414.9	1419.0	1423.1	1427.2	1431.3	1435.4	1439.5	1443.6	1447.7	1451.8	1455.9	1460.0	1464.1	1468.2	1472.3	1476.4	1480.5	1484.6	1488.7	1492.8	1496.9	1501.0	1505.1	1509.2	1513.3	1517.4	1521.5	1525.6	1529.7	1533.8	1537.9	1542.0	1546.1	1550.2	1554.3	1558.4	1562.5	1566.6	1570.7	1574.8	1578.9	1583.0	1587.1	1591.2	1595.3	1599.4	1603.5	1607.6	1611.7	1615.8	1619.9	1624.0	1628.1	1632.2	1636.3	1640.4	1644.5	1648.6	1652.7	1656.8	1660.9	1665.0	1669.1	1673.2	1677.3	1681.4	1685.5	1689.6	1693.7	1697.8	1701.9	1706.0	1710.1	1714.2	1718.3	1722.4	1726.5	1730.6	1734.7	1738.8	1742.9	1747.0	1751.1	1755.2	1759.3	1763.4	1767.5	1771.6	1775.7	1779.8	1783.9	1788.0	1792.1	1796.2	1800.3	1804.4	1808.5	1812.6	1816.7	1820.8	1824.9	1829.0	1833.1	1837.2	1841.3	1845.4	1849.5	1853.6	1857.7	1861.8	1865.9	1870.0	1874.1	1878.2	1882.3	1886.4	1890.5	1894.6	1898.7	1902.8	1906.9	1911.0	1915.1	1919.2	1923.3	1927.4	1931.5	1935.6	1939.7	1943.8	1947.9	1952.0	1956.1	1960.2	1964.3	1968.4	1972.5	1976.6	1980.7	1984.8	1988.9	1993.0	1997.1	2001.2	2005.3	2009.4	2013.5	2017.6	2021.7	2025.8	2029.9	2034.0	2038.1	2042.2	2046.3	2050.4	2054.5	2058.6	2062.7	2066.8	2070.9	2075.0	2079.1	2083.2	2087.3	2091.4	2095.5	2099.6	2103.7	2107.8	2111.9	2116.0	2120.1	2124.2	2128.3	2132.4	2136.5	2140.6	2144.7	2148.8	2152.9	2157.0	2161.1	2165.2	2169.3	2173.4	2177.5	2181.6	2185.7	2189.8	2193.9	2198.0	2202.1	2206.2	2210.3	2214.4	2218.5	2222.6	2226.7	2230.8	2234.9	2239.0	2243.1	2247.2	2251.3	2255.4	2259.5	2263.6	2267.7	2271.8	2275.9	2280.0	2284.1	2288.2	2292.3	2296.4	2300.5	2304.6	2308.7	2312.8	2316.9	2321.0	2325.1	2329.2	2333.3	2337.4	2341.5	2345.6	2349.7	2353.8	2357.9	2362.0	2366.1	2370.2	2374.3	2378.4	2382.5	2386.6	2390.7	2394.8	2398.9	2403.0	2407.1	2411.2	2415.3	2419.4	2423.5	2427.6	2431.7	2435.8	2439.9	2444.0	2448.1	2452.2	2456.3	2460.4	2464.5	2468.6	2472.7	2476.8	2480.9	2485.0	2489.1	2493.2	2497.3	2501.4	2505.5	2509.6	2513.7	2517.8	2521.9	2526.0	2530.1	2534.2	2538.3	2542.4	2546.5	2550.6	2554.7	2558.8	2562.9	2567.0	2571.1	2575.2	2579.3	2583.4	2587.5	2591.6	2595.7	2599.8	2603.9	2608.0	2612.1	2616.2	2620.3	2624.4	2628.5	2632.6	2636.7	2640.8	2644.9	2649.0	2653.1	2657.2	2661.3	2665.4	2669.5	2673.6	2677.7	2681.8	2685.9	2690.0	2694.1	2698.2	2702.3	2706.4	2710.5	2714.6	2718.7	2722.8	2726.9	2731.0	2735.1	2739.2	2743.3	2747.4	2751.5	2755.6	2759.7	2763.8	2767.9	2772.0	2776.1	2780.2	2784.3	2788.4	2792.5	2796.6	2800.7	2804.8	2808.9	2813.0	2817.1	2821.2	2825.3	2829.4	2833.5	2837.6	2841.7	2845.8	2849.9	2854.0	2858.1	2862.2	2866.3	2870.4	2874.5	2878.6	2882.7	2886.8	2890.9	2895.0	2899.1	2903.2	2907.3	2911.4	2915.5	2919.6	2923.7	2927.8	2931.9	2936.0	2940.1	2944.2	2948.3	2952.4	2956.5	2960.6	2964.7	2968.8	2972.9	2977.0	2981.1	2985.2	2989.3	2993.4	2997.5	3001.6	3005.7	3009.8	3013.9	3018.0	3022.1	3026.2	3030.3	3034.4	3038.5	3042.6	3046.7	3050.8	3054.9	3059.0	3063.1	3067.2	3071.3	3075.4	3079.5	3083.6	3087.7	3091.8	3095.9	3100.0	3104.1	3108.2	3112.3	3116.4	3120.5	3124.6	3128.7	3132.8	3136.9	3141.0	3145.1	3149.2	3153.3	3157.4	3161.5	3165.6	3169.7	3173.8	3177.9	3182.0	3186.1	3190.2	3194.3	3198.4	3202.5	3206.6	3210.7	3214.8	3218.9	3223.0	3227.1	3231.2	3235.3	3239.4	3243.5	3247.6	3251.7	3255.8	3259.9	3264.0	3268.1	3272.2	3276.3	3280.4	3284.5	3288.6	3292.7	3296.8	3300.9	3305.0	3309.1	3313.2	3317.3	3321.4	3325.5	3329.6	3333.7	3337.8	3341.9	3346.0	3350.1	3354.2	3358.3	3362.4	3366.5	3370.6	3374.7	3378.8	3382.9	3387.0	3391.1	3395.2	3399.3	3403.4	3407.5	3411.6	3415.7	3419.8	3423.9	3428.0	3432.1	3436.2	3440.3	3444.4	3448.5	3452.6	3456.7	3460.8	3464.9	3469.0	3473.1	3477.2	3481.3	3485.4	3489.5	3493.6	3497.7	3501.8	3505.9	3510.0	3514.1	3518.2	3522.3	3526.4	3530.5	3534.6	3538.7	3542.8	3546.9	3551.0	3555.1	3559.2	3563.3	3567.4	3571.5	3575.6	3579.7	3583.8	3587.9	3592.0	3596.1	3600.2	3604.3	3608.4	3612.5	3616.6	3620.7	3624.8	3628.9	3633.0	3637.1	3641.2	3645.3	3649.4	3653.5	3657.6	3661.7	3665.8	3669.9	3674.0	3678.1	3682.2	3686.3	3690.4	3694.5	3698.6	3702.7	3706.8	3710.9	3715.0	3719.1	3723.2	3727.3	3731.4	3735.5	3739.6	3743.7	3747.8	3751.9	3756.0	3760.1	3764.2	3768.3	3772.4	3776.5	3780.6	3784.7	3788.8	3792.9	3797.0	3801.1	3805.2	3809.3	3813.4	3817.5	3821.6	3825.7	3829.8	3833.9	3838.0	3842.1	3846.2	3850.3	3854.4	3858.5	3862.6	3866.7	3870.8	3874.9	3879.0	3883.1	3887.2	3891.3	3895.4	3899.5	3903.6	3907.7	3911.8	3915.9	3920.0	3924.1	3928.2	3932.3	3936.4	3940.5	3944.6	3948.7	3952.8	3956.9	3961.0	3965.1	3969.2	3973.3	3977.4	3981.5	3985.6	3989.7	3993.8	3997.9	4002.0	4006.1	4010.2	4014.3	4018.4	4022.5	4026.6	4030.7	4034.8	4038.9	4043.0	4047.1	4051.2	4055.3	4059.4	4063.5	4067.6	4071.7	4075.8	4079.9	4084.0	4088.1	4092.2	4096.3	4100.4	4104.5	4108.6	4112.7	4116.8	4120.9	4125.0	4129.1	4133.2	4137.3	4141.4	4145.5	4149.6	4153.7	4157.8	4161.9	4166.0	4170.1	4174.2	4178.3	4182.4	4186.5	4190.6	4194.7	4198.8	4202.9	4207.0	4211.1	4215.2	4219.3	4223.4	4227.5	4231.6	4235.7	4239.8	4243.9	4248.0	4252.1	4256.2	4260.3	4264.4	4268.5	4272.6	4276.7	4280.8	4284.9	4289.0	4293.1	4297.2	4301.3	4305.4	4309.5	4313.6	4317.7	4321.8	4325.9	4330.0	4334.1	4338.2	4342.3	4346.4	4350.5	4354.6	4358.7	4362.8	4366.9	4371.0	4375.1	4379.2	4383.3	4387.4	4391.5	4395.6	4399.7	4403.8	4407.9	4412.0	4416.1	4420.2	4424.3	4428.4	4432.5	4436.6	4440.7	4444.8	4448.9	4453.0	4457.1	4461.2	4465.3	4469.4	4473.5	4477.6	4481.7	4485.8	4489.9	4494.0	4498.1	4502.2	4506.3	4510.4	4514.5	4518.6	4522.7	4526.8	4530.9	4535.0	4539.1	4543.2	4547.3	4551.4	4555.5	4559.6	4563.7	4567.8	4571.9	4576.0	4580.1	4584.2	4588.3	4592.4	4596.5	4600.6	4604.7	4608.8	4612.9	4617.0	4621.1	4625.2	4629.3

A B C D E F G H I J K L M N O P Q R S T U V W X Y Z a b c d e f g h i j k lab*tch*

Table with 28 rows (01-27) and 28 columns (A-lab*tch*). Each cell contains numerical data, often with multiple values separated by dots or spaces. The table is divided into sections by horizontal red lines.

	A	B	C	D	E	F	G	H	I	J	K	L	M	N	O	P	Q	R	S	T	U	V	W	X	Y	Z	a	b	c	d	e	f	g	h	i	j	k	LAB*LAB*																																																																																																																																																																																																																																																																																																																																																																																																																																																																																																																																																																																																																																																																																																																																																																																																																																																																																																																																																																																																																																																																																																																																	
01	20.4	24.5	28.7	32.8	36.9	41.1	45.2	49.3	53.5	57.6	61.8	65.9	70.1	74.2	78.3	82.4	86.5	90.6	94.7	98.8	102.9	107.0	111.1	115.2	119.3	123.4	127.5	131.6	135.7	139.8	143.9	148.0	152.1	156.2	160.3	164.4	168.5	172.6	176.7	180.8	184.9	189.0	193.1	197.2	201.3	205.4	209.5	213.6	217.7	221.8	225.9	230.0	234.1	238.2	242.3	246.4	250.5	254.6	258.7	262.8	266.9	271.0	275.1	279.2	283.3	287.4	291.5	295.6	299.7	303.8	307.9	312.0	316.1	320.2	324.3	328.4	332.5	336.6	340.7	344.8	348.9	353.0	357.1	361.2	365.3	369.4	373.5	377.6	381.7	385.8	389.9	394.0	398.1	402.2	406.3	410.4	414.5	418.6	422.7	426.8	430.9	435.0	439.1	443.2	447.3	451.4	455.5	459.6	463.7	467.8	471.9	476.0	480.1	484.2	488.3	492.4	496.5	500.6	504.7	508.8	512.9	517.0	521.1	525.2	529.3	533.4	537.5	541.6	545.7	549.8	553.9	558.0	562.1	566.2	570.3	574.4	578.5	582.6	586.7	590.8	594.9	599.0	603.1	607.2	611.3	615.4	619.5	623.6	627.7	631.8	635.9	640.0	644.1	648.2	652.3	656.4	660.5	664.6	668.7	672.8	676.9	681.0	685.1	689.2	693.3	697.4	701.5	705.6	709.7	713.8	717.9	722.0	726.1	730.2	734.3	738.4	742.5	746.6	750.7	754.8	758.9	763.0	767.1	771.2	775.3	779.4	783.5	787.6	791.7	795.8	799.9	804.0	808.1	812.2	816.3	820.4	824.5	828.6	832.7	836.8	840.9	845.0	849.1	853.2	857.3	861.4	865.5	869.6	873.7	877.8	881.9	886.0	890.1	894.2	898.3	902.4	906.5	910.6	914.7	918.8	922.9	927.0	931.1	935.2	939.3	943.4	947.5	951.6	955.7	959.8	963.9	968.0	972.1	976.2	980.3	984.4	988.5	992.6	996.7	1000.8	1004.9	1009.0	1013.1	1017.2	1021.3	1025.4	1029.5	1033.6	1037.7	1041.8	1045.9	1050.0	1054.1	1058.2	1062.3	1066.4	1070.5	1074.6	1078.7	1082.8	1086.9	1091.0	1095.1	1099.2	1103.3	1107.4	1111.5	1115.6	1119.7	1123.8	1127.9	1132.0	1136.1	1140.2	1144.3	1148.4	1152.5	1156.6	1160.7	1164.8	1168.9	1173.0	1177.1	1181.2	1185.3	1189.4	1193.5	1197.6	1201.7	1205.8	1209.9	1214.0	1218.1	1222.2	1226.3	1230.4	1234.5	1238.6	1242.7	1246.8	1250.9	1255.0	1259.1	1263.2	1267.3	1271.4	1275.5	1279.6	1283.7	1287.8	1291.9	1296.0	1300.1	1304.2	1308.3	1312.4	1316.5	1320.6	1324.7	1328.8	1332.9	1337.0	1341.1	1345.2	1349.3	1353.4	1357.5	1361.6	1365.7	1369.8	1373.9	1378.0	1382.1	1386.2	1390.3	1394.4	1398.5	1402.6	1406.7	1410.8	1414.9	1419.0	1423.1	1427.2	1431.3	1435.4	1439.5	1443.6	1447.7	1451.8	1455.9	1460.0	1464.1	1468.2	1472.3	1476.4	1480.5	1484.6	1488.7	1492.8	1496.9	1501.0	1505.1	1509.2	1513.3	1517.4	1521.5	1525.6	1529.7	1533.8	1537.9	1542.0	1546.1	1550.2	1554.3	1558.4	1562.5	1566.6	1570.7	1574.8	1578.9	1583.0	1587.1	1591.2	1595.3	1599.4	1603.5	1607.6	1611.7	1615.8	1619.9	1624.0	1628.1	1632.2	1636.3	1640.4	1644.5	1648.6	1652.7	1656.8	1660.9	1665.0	1669.1	1673.2	1677.3	1681.4	1685.5	1689.6	1693.7	1697.8	1701.9	1706.0	1710.1	1714.2	1718.3	1722.4	1726.5	1730.6	1734.7	1738.8	1742.9	1747.0	1751.1	1755.2	1759.3	1763.4	1767.5	1771.6	1775.7	1779.8	1783.9	1788.0	1792.1	1796.2	1800.3	1804.4	1808.5	1812.6	1816.7	1820.8	1824.9	1829.0	1833.1	1837.2	1841.3	1845.4	1849.5	1853.6	1857.7	1861.8	1865.9	1870.0	1874.1	1878.2	1882.3	1886.4	1890.5	1894.6	1898.7	1902.8	1906.9	1911.0	1915.1	1919.2	1923.3	1927.4	1931.5	1935.6	1939.7	1943.8	1947.9	1952.0	1956.1	1960.2	1964.3	1968.4	1972.5	1976.6	1980.7	1984.8	1988.9	1993.0	1997.1	2001.2	2005.3	2009.4	2013.5	2017.6	2021.7	2025.8	2029.9	2034.0	2038.1	2042.2	2046.3	2050.4	2054.5	2058.6	2062.7	2066.8	2070.9	2075.0	2079.1	2083.2	2087.3	2091.4	2095.5	2099.6	2103.7	2107.8	2111.9	2116.0	2120.1	2124.2	2128.3	2132.4	2136.5	2140.6	2144.7	2148.8	2152.9	2157.0	2161.1	2165.2	2169.3	2173.4	2177.5	2181.6	2185.7	2189.8	2193.9	2198.0	2202.1	2206.2	2210.3	2214.4	2218.5	2222.6	2226.7	2230.8	2234.9	2239.0	2243.1	2247.2	2251.3	2255.4	2259.5	2263.6	2267.7	2271.8	2275.9	2280.0	2284.1	2288.2	2292.3	2296.4	2300.5	2304.6	2308.7	2312.8	2316.9	2321.0	2325.1	2329.2	2333.3	2337.4	2341.5	2345.6	2349.7	2353.8	2357.9	2362.0	2366.1	2370.2	2374.3	2378.4	2382.5	2386.6	2390.7	2394.8	2398.9	2403.0	2407.1	2411.2	2415.3	2419.4	2423.5	2427.6	2431.7	2435.8	2439.9	2444.0	2448.1	2452.2	2456.3	2460.4	2464.5	2468.6	2472.7	2476.8	2480.9	2485.0	2489.1	2493.2	2497.3	2501.4	2505.5	2509.6	2513.7	2517.8	2521.9	2526.0	2530.1	2534.2	2538.3	2542.4	2546.5	2550.6	2554.7	2558.8	2562.9	2567.0	2571.1	2575.2	2579.3	2583.4	2587.5	2591.6	2595.7	2599.8	2603.9	2608.0	2612.1	2616.2	2620.3	2624.4	2628.5	2632.6	2636.7	2640.8	2644.9	2649.0	2653.1	2657.2	2661.3	2665.4	2669.5	2673.6	2677.7	2681.8	2685.9	2690.0	2694.1	2698.2	2702.3	2706.4	2710.5	2714.6	2718.7	2722.8	2726.9	2731.0	2735.1	2739.2	2743.3	2747.4	2751.5	2755.6	2759.7	2763.8	2767.9	2772.0	2776.1	2780.2	2784.3	2788.4	2792.5	2796.6	2800.7	2804.8	2808.9	2813.0	2817.1	2821.2	2825.3	2829.4	2833.5	2837.6	2841.7	2845.8	2849.9	2854.0	2858.1	2862.2	2866.3	2870.4	2874.5	2878.6	2882.7	2886.8	2890.9	2895.0	2899.1	2903.2	2907.3	2911.4	2915.5	2919.6	2923.7	2927.8	2931.9	2936.0	2940.1	2944.2	2948.3	2952.4	2956.5	2960.6	2964.7	2968.8	2972.9	2977.0	2981.1	2985.2	2989.3	2993.4	2997.5	3001.6	3005.7	3009.8	3013.9	3018.0	3022.1	3026.2	3030.3	3034.4	3038.5	3042.6	3046.7	3050.8	3054.9	3059.0	3063.1	3067.2	3071.3	3075.4	3079.5	3083.6	3087.7	3091.8	3095.9	3100.0	3104.1	3108.2	3112.3	3116.4	3120.5	3124.6	3128.7	3132.8	3136.9	3141.0	3145.1	3149.2	3153.3	3157.4	3161.5	3165.6	3169.7	3173.8	3177.9	3182.0	3186.1	3190.2	3194.3	3198.4	3202.5	3206.6	3210.7	3214.8	3218.9	3223.0	3227.1	3231.2	3235.3	3239.4	3243.5	3247.6	3251.7	3255.8	3259.9	3264.0	3268.1	3272.2	3276.3	3280.4	3284.5	3288.6	3292.7	3296.8	3300.9	3305.0	3309.1	3313.2	3317.3	3321.4	3325.5	3329.6	3333.7	3337.8	3341.9	3346.0	3350.1	3354.2	3358.3	3362.4	3366.5	3370.6	3374.7	3378.8	3382.9	3387.0	3391.1	3395.2	3399.3	3403.4	3407.5	3411.6	3415.7	3419.8	3423.9	3428.0	3432.1	3436.2	3440.3	3444.4	3448.5	3452.6	3456.7	3460.8	3464.9	3469.0	3473.1	3477.2	3481.3	3485.4	3489.5	3493.6	3497.7	3501.8	3505.9	3510.0	3514.1	3518.2	3522.3	3526.4	3530.5	3534.6	3538.7	3542.8	3546.9	3551.0	3555.1	3559.2	3563.3	3567.4	3571.5	3575.6	3579.7	3583.8	3587.9	3592.0	3596.1	3600.2	3604.3	3608.4	3612.5	3616.6	3620.7	3624.8	3628.9	3633.0	3637.1	3641.2	3645.3	3649.4	3653.5	3657.6	3661.7	3665.8	3669.9	3674.0	3678.1	3682.2	3686.3	3690.4	3694.5	3698.6	3702.7	3706.8	3710.9	3715.0	3719.1	3723.2	3727.3	3731.4	3735.5	3739.6	3743.7	3747.8	3751.9	3756.0	3760.1	3764.2	3768.3	3772.4	3776.5	3780.6	3784.7	3788.8	3792.9	3797.0	3801.1	3805.2	3809.3	3813.4	3817.5	3821.6	3825.7	3829.8	3833.9	3838.0	3842.1	3846.2	3850.3	3854.4	3858.5	3862.6	3866.7	3870.8	3874.9	3879.0	3883.1	3887.2	3891.3	3895.4	3899.5	3903.6	3907.7	3911.8	3915.9	3920.0	3924.1	3928.2	3932.3	3936.4	3940.5	3944.6	3948.7	3952.8	3956.9	3961.0	3965.1	3969.2	3973.3	3977.4	3981.5	3985.6	3989.7	3993.8	3997.9	4002.0	4006.1	4010.2	4014.3	4018.4	4022.5	4026.6	4030.7	4034.8	4038.9	4043.0	4047.1	4051.2	4055.3	4059.4	4063.5	4067.6	4071.7	4075.8	4079.9	4084.0	4088.1	4092.2	4096.3	4100.4	4104.5	4108.6	4112.7	4116.8	4120.9	4125.0	4129.1	4133.2	4137.3	4141.4	4145.5	4149.6	4153.7	4157.8	4161.9	4166.0	4170.1	4174.2	4178.3	4182.4	4186.5	4190.6	4194.7	4198.8	4202.9	4207.0	4211.1	4215.2	4219.3	4223.4	4227.5	4231.6	4235.7	4239.8	4243.9	4248.0	4252.1	4256.2	4260.3	4264.4	4268.5	4272.6	4276.7	4280.8	4284.9	4289.0	4293.1	4297.2	4301.3	4305.4	4309.5	4313.6	4317.7	4321.8	4325.9	4330.0	4334.1	4338.2	4342.3	4346.4	4350.5	4354.6	4358.7	4362.8	4366.9	4371.0	4375.1	4379.2	4383.3	4387.4	4391.5	4395.6	4399.7	4403.8	4407.9	4412.0	4416.1	4420.2	4424.3	4428.4	4432.5	4436.6	4440.7	4444.8	4448.9	4453.0	4457.1	4461.2	4465.3	4469.4	4473.5	4477.6	4481.7	4485.8	4489.9	4494.0	4498.1	4502.2	4506.3	4510.4	4514.5	4518.6	4522.7	4526.8	4530.9	4535.0	4539.1	4543.2	4547.3	4551.4	4555.5	4559.6	4563.7	4567.8	4571.9	4576.0	4580.1	4584.2	4588.3	4592.4	4596.5	4600.6	4604.7	4608.8	4612.9	4617.0	4621.1	4625.2	4629.3	4633.4	

