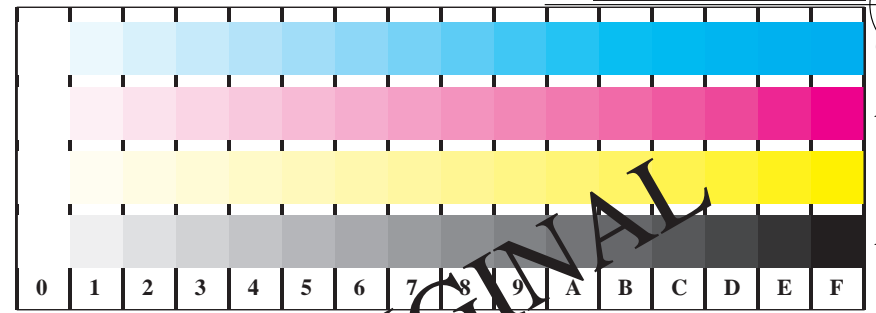


Order information of production company (e.g. Web-site) for ISO test chart (e.g. code=rha4rd-100)

192 x 128  
384 x 256  
768 x 512  
1536 x 1024  
3072 x 2048



Picture B1: Flower motif, 14 CIE-test colours acc. to CIE publ. 13.3, and 2 + 16 grey steps; slide film (sf)



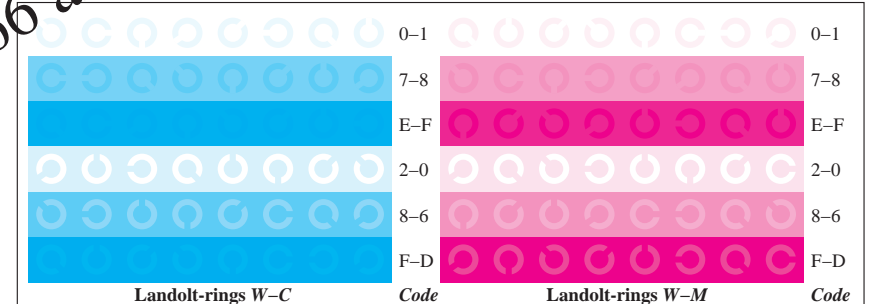
Picture B4: 16 visual equidistant steps of color series W-C, W-M, W-Y, and W-N



Picture B5: Script and Landolt-rings in four sizes and in colours N, M, C, and Y



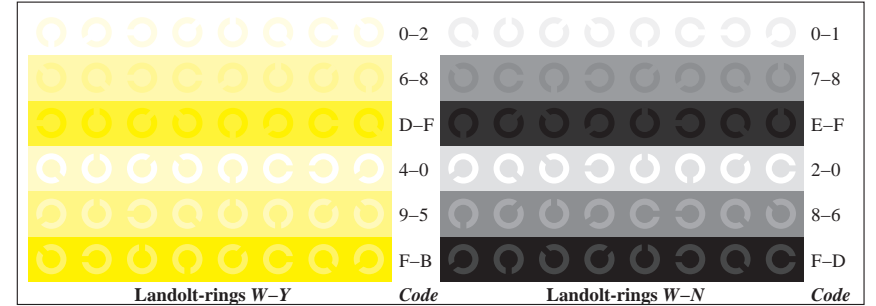
Picture B2: Radial grating (Siemens stars) W-C, W-M, W-Y, W-N, and W-Z



Picture B6: Landolt-rings W-C, and W-M



Picture B3: 14 CIE-test colours acc. to CIE publ. 13.3, and 2 + 16 grey steps; sf-\*data used



Picture B7: Landolt-rings W-Y, and W-N

Test chart no. 2 for color devices according to ISO 15775: compare [www.actech.com.br/sc28](http://www.actech.com.br/sc28)

