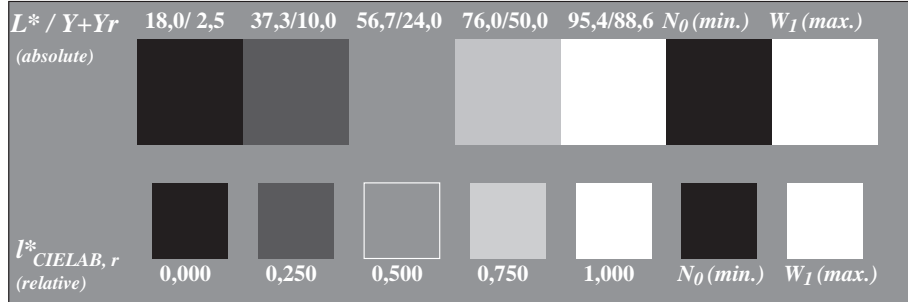
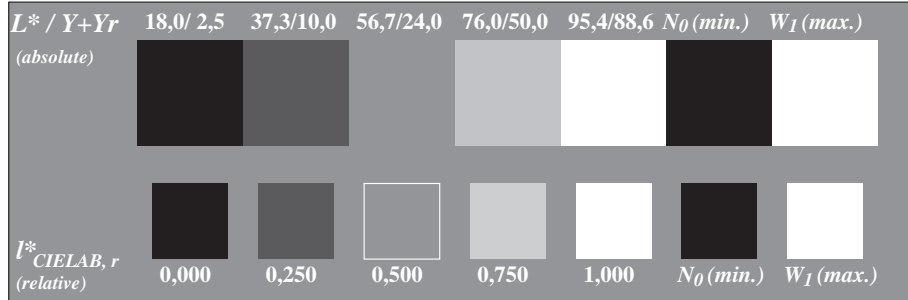


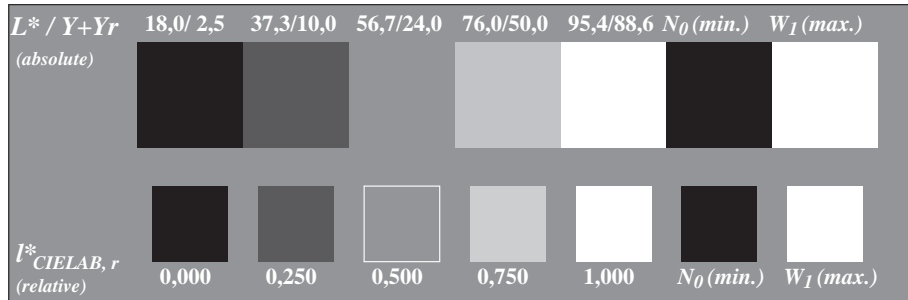
Picture C2: 5 visual equidistant L^* -grey steps + N_0 + W_1 ; Use of the PS operator *000n* setcmykcolor*



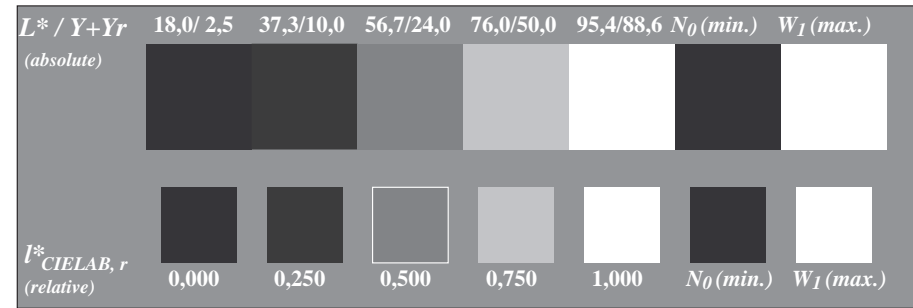
Picture C2: 5 visual equidistant L^* -grey steps + N_0 + W_1 ; Use of the PS operator *w* setgray*



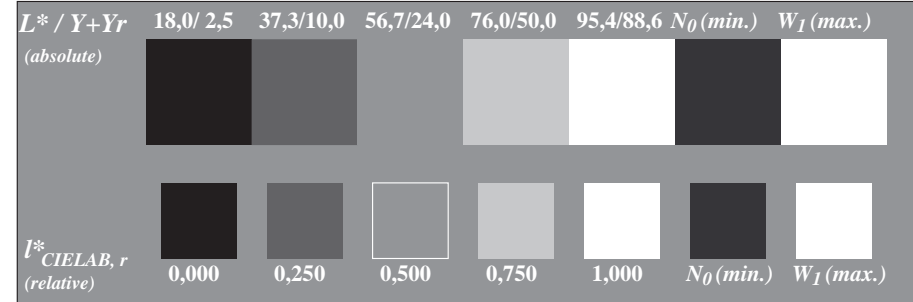
Picture C2: 5 visual equidistant L^* -grey steps + N_0 + W_1 ; Use of the PS operator *nnn0* setcmykcolor*



Picture C2: 5 visual equidistant L^* -grey steps + N_0 + W_1 ; Use of the PS operator *www* setrgbcolor*



Picture C2: 5 visual equidistant L^* -grey steps + N_0 + W_1 ; Use of the PS operator *lab* setcolor*



Picture C2: 5 visual equidistant L^* -grey steps + N_0 + W_1 ; Use of the PS operator *LAB* setcolor*