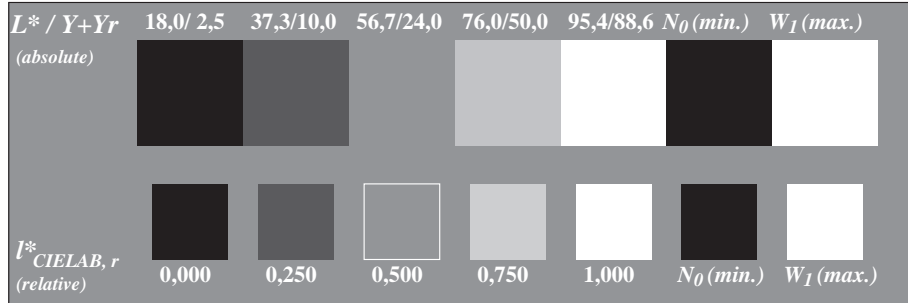
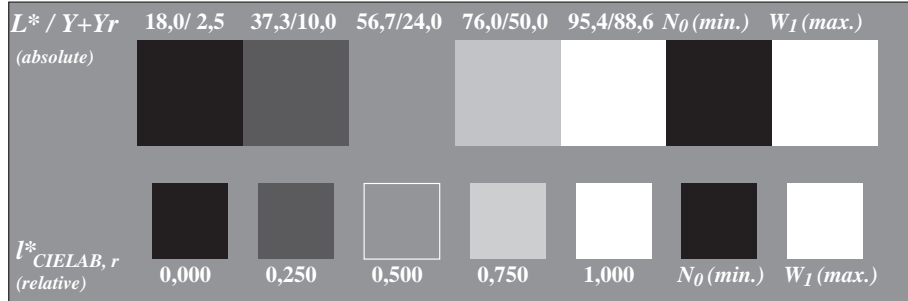


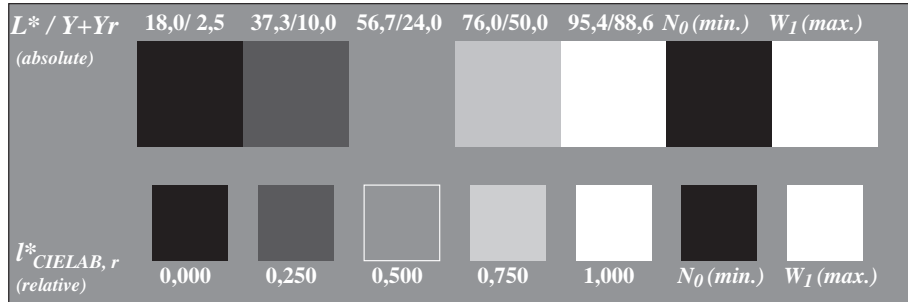
Picture C2: 5 visual equidistant  $L^*$ -grey steps +  $N_0$  +  $W_I$ ; Use of the PS operator *000n\* setcmykcolor*



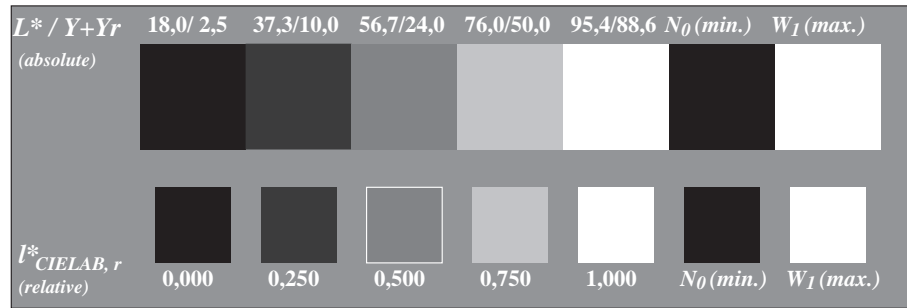
Picture C2: 5 visual equidistant  $L^*$ -grey steps +  $N_0$  +  $W_I$ ; Use of the PS operator *w\* setgray*



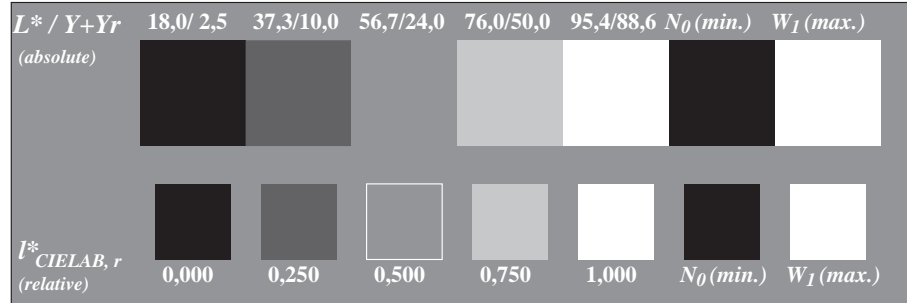
Picture C2: 5 visual equidistant  $L^*$ -grey steps +  $N_0$  +  $W_I$ ; Use of the PS operator *nnn0\* setcmykcolor*



Picture C2: 5 visual equidistant  $L^*$ -grey steps +  $N_0$  +  $W_I$ ; Use of the PS operator *www\* setrgbcolor*



Picture C2: 5 visual equidistant  $L^*$ -grey steps +  $N_0$  +  $W_I$ ; Use of the PS operator *lab\* setcolor*



Picture C2: 5 visual equidistant  $L^*$ -grey steps +  $N_0$  +  $W_I$ ; Use of the PS operator *LAB\* setcolor*