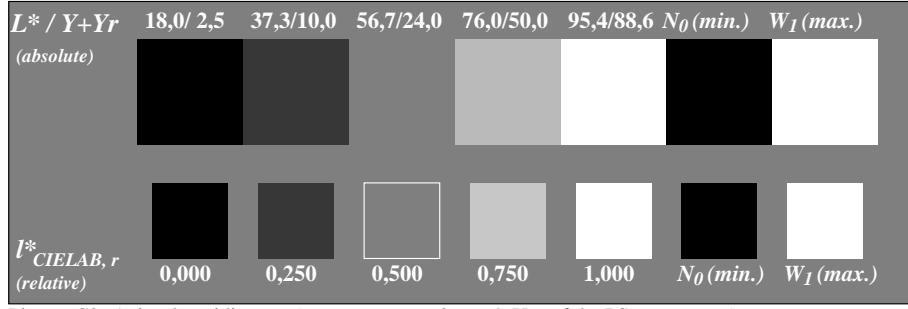
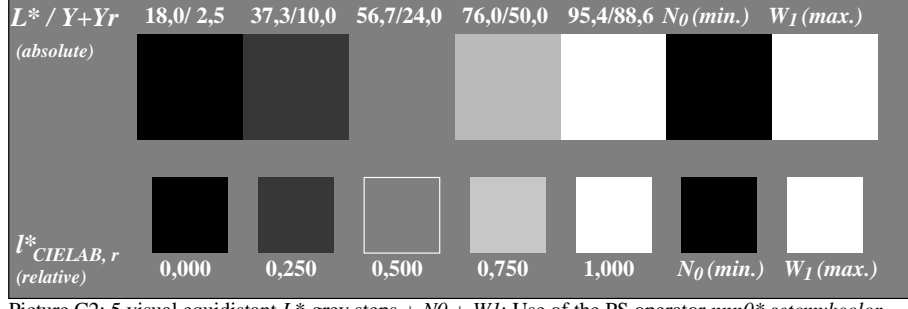


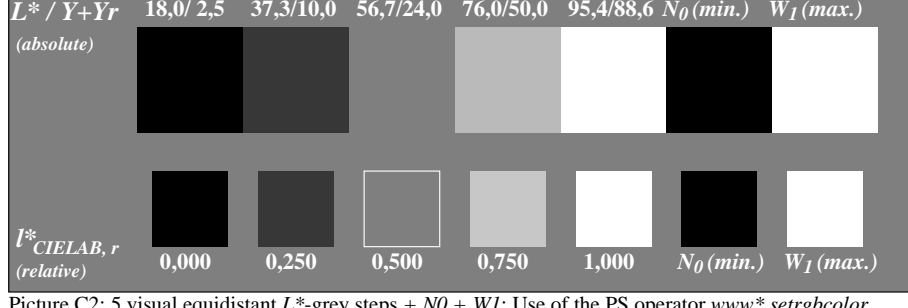
Picture C2: 5 visual equidistant L^* -grey steps + N_0 + W_1 ; Use of the PS operator *000n* setcmycolor*



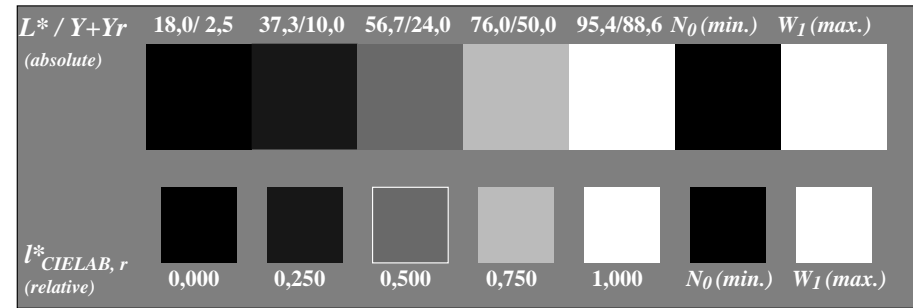
Picture C2: 5 visual equidistant L^* -grey steps + N_0 + W_1 ; Use of the PS operator *w* setgray*



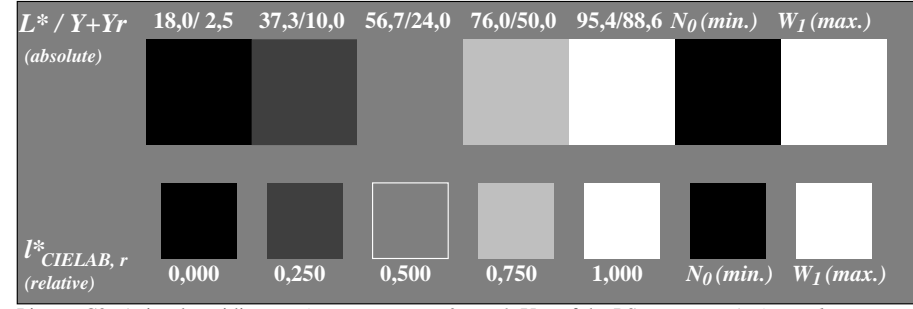
Picture C2: 5 visual equidistant L^* -grey steps + N_0 + W_1 ; Use of the PS operator *nnn0* setcmycolor*



Picture C2: 5 visual equidistant L^* -grey steps + N_0 + W_1 ; Use of the PS operator *www* setrgbcolor*



Picture C2: 5 visual equidistant L^* -grey steps + N_0 + W_1 ; Use of the PS operator *lab* setcolor*



Picture C2: 5 visual equidistant L^* -grey steps + N_0 + W_1 ; Use of the PS operator *LAB* setcolor*

Fig. C2 of ISO/IEC-test chart no. 3;

ISO/IEC 15775 and input: mixture (m) of PS operators
 DIS ISO/IEC 19839-X; output: *w* setgray*

See for similar files: <http://www.ps.bam.de/DE80/DE80.HTM>
 Information and Order: <http://www.ps.bam.de>
 Version 2.0, io=m,7; iLRS; oLRS, CIEXYZ

BAM registration: 20030101-IE80/10B/B80E07FP.PS/.PDF
 application for monitors and printers, Yr=2,5, XYZ
 BAM material: code=tha4ta