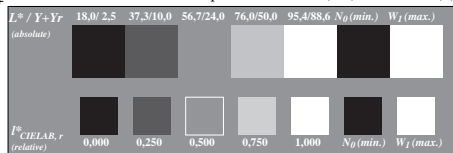
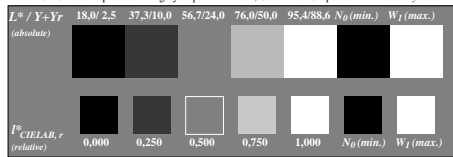


See for similar files: <http://www.ps.bam.de/IE80/DE80.HTM>  
 Information and Order: <http://www.ps.bam.de> Version 2.0, io-mm

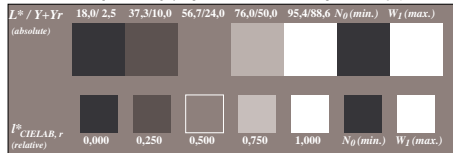
BAM registration: 20030101-IE80/B80E00N1.PS/.TXT  
 application for monitors and printers



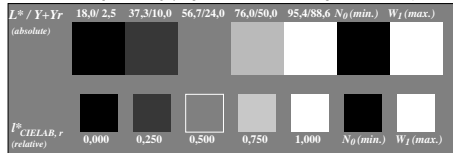
Picture C2: 5 visual equidistant  $L^*$ -grey steps +  $N_0$  +  $W_I$ ; Use of the PS operator *000n\* setcmkcolor*



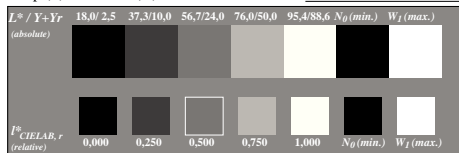
Picture C2: 5 visual equidistant  $L^*$ -grey steps +  $N_0$  +  $W_I$ ; Use of the PS operator *w\* setgray*



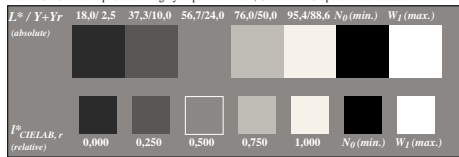
Picture C2: 5 visual equidistant  $L^*$ -grey steps +  $N_0$  +  $W_I$ ; Use of the PS operator *nnn0\* setcmkcolor*



Picture C2: 5 visual equidistant  $L^*$ -grey steps +  $N_0$  +  $W_I$ ; Use of the PS operator *www\* setrgbcolor*



Picture C2: 5 visual equidistant  $L^*$ -grey steps +  $N_0$  +  $W_I$ ; Use of the PS operator *lab\* setcolor*



Picture C2: 5 visual equidistant  $L^*$ -grey steps +  $N_0$  +  $W_I$ ; Use of the PS operator *LAB\* setcolor*

Fig. C2 of ISO/IEC-test chart no. 3; ISO/IEC 15775 and DIS ISO/IEC 19839-X; input: mixture (m) of PS operators  
 no change compared to input

BAM material: code=thata