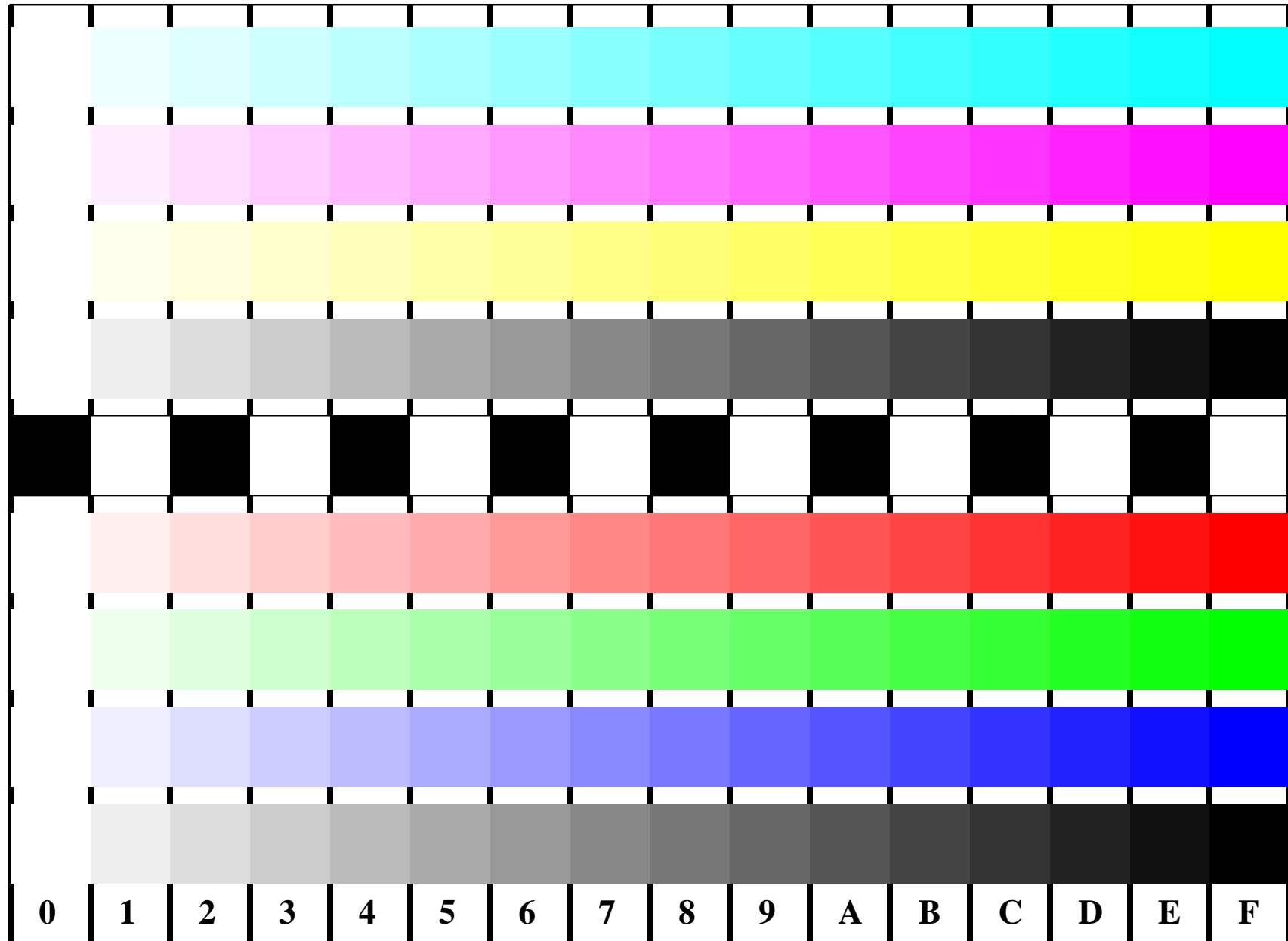




See for similar files: <http://www.ps.bam.de/IE95/IE95.HTM>
 Information and Order: <http://www.ps.bam.de> Version 2.0, io=0,1; iOLS; oOLS, CIEXYZ

BAM registration: 20030101-IE95/10B/B95E01FP.PS/.PDF BAM material: code=thata
 application for monitors, Yr=2.5, XYZ



Picture B4 and D4: 16 equidistant steps **B4**: W-C, W-M, W-Y and W-N; **D4**: W-O, W-L, W-V and W-N(CMY); Use of PS operator; B4: $cmy0^* / 000n^*$ setcmycolor; D4: $cmy0^*$ setcmycolor (only)

Fig. B4/D4 of ISO/IEC-test chart 2/4;

ISO/IEC 15775 and
 TR ISO/IEC 24705;

input: $cmy0^*$ setcmycolor
 output: olv^* setrgbcolor / w^* setgray

