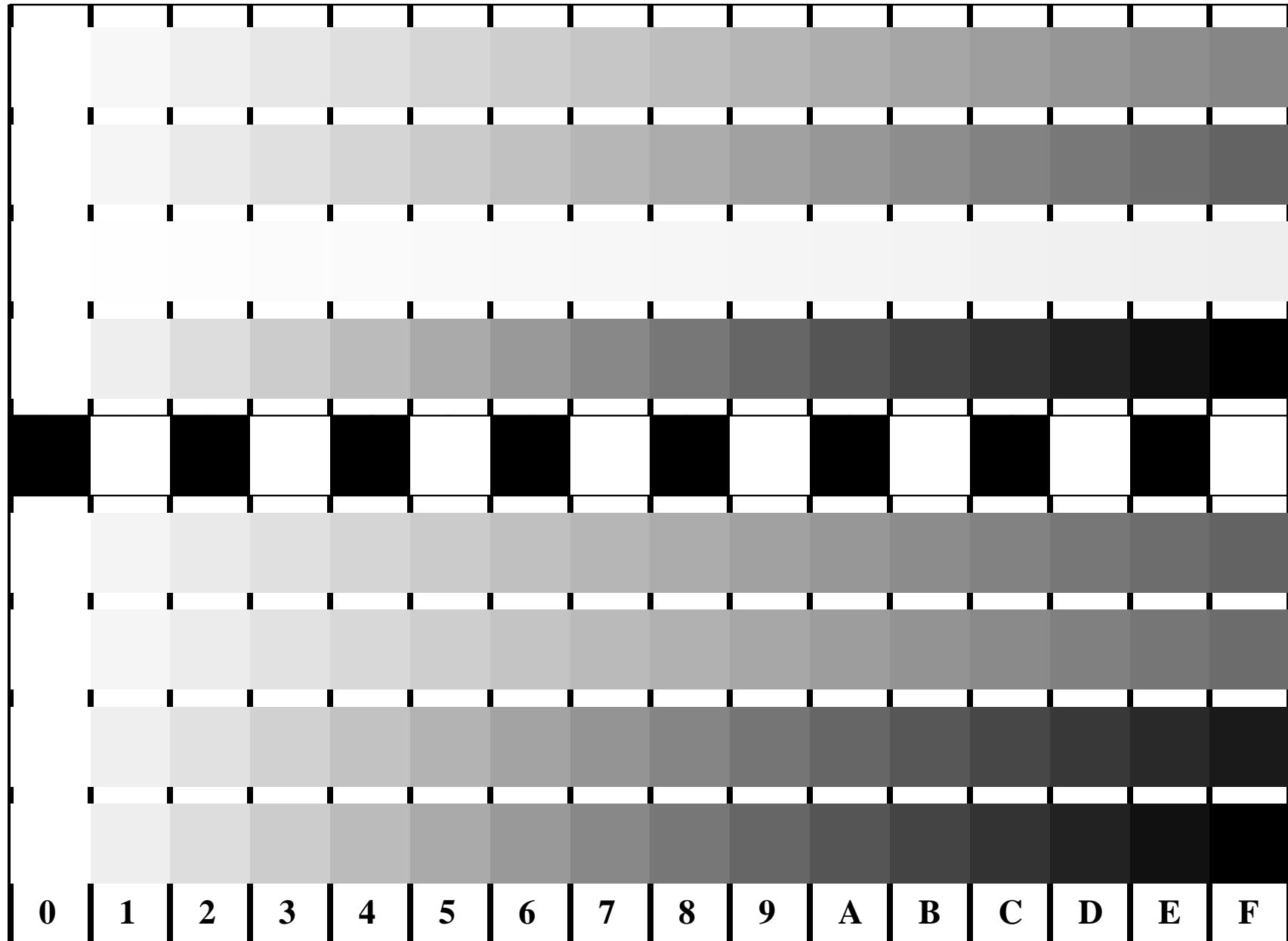


See for similar files: <http://www.ps.bam.de/IE95/IE95.HTM>  
Information and Order: <http://www.ps.bam.de> Version 2.0, io=0,7; iOLS; oOLS, CIEXYZ

BAM registration: 20030101-IE95/10B/B95E07FP.PS/.PDF BAM material: code=thata  
application for monitors, Yr=2.5, XYZ



**C** *c000\**  
**M** *0m00\**  
**Y** *00y0\**  
**N** *000n\**  
**O** *0my0\**  
**L** *c0y0\**  
**V** *cm00\**  
**N** *cmy0\**  
\*=input

Picture B4 and D4: 16 equidistant steps **B4**: W-C, W-M, W-Y and W-N; **D4**: W-O, W-L, W-V and W-N(CMY); Use of PS operator; B4:  $cmy0^* / 000n^*$  setcmykcolor; D4:  $cmy0^*$  setcmykcolor (only)

Fig. B4/D4 of ISO/IEC-test chart 2/4;

ISO/IEC 15775 and  
TR ISO/IEC 24705;

input:  $cmy0^*$  setcmykcolor  
output:  $w^*$  setgray

