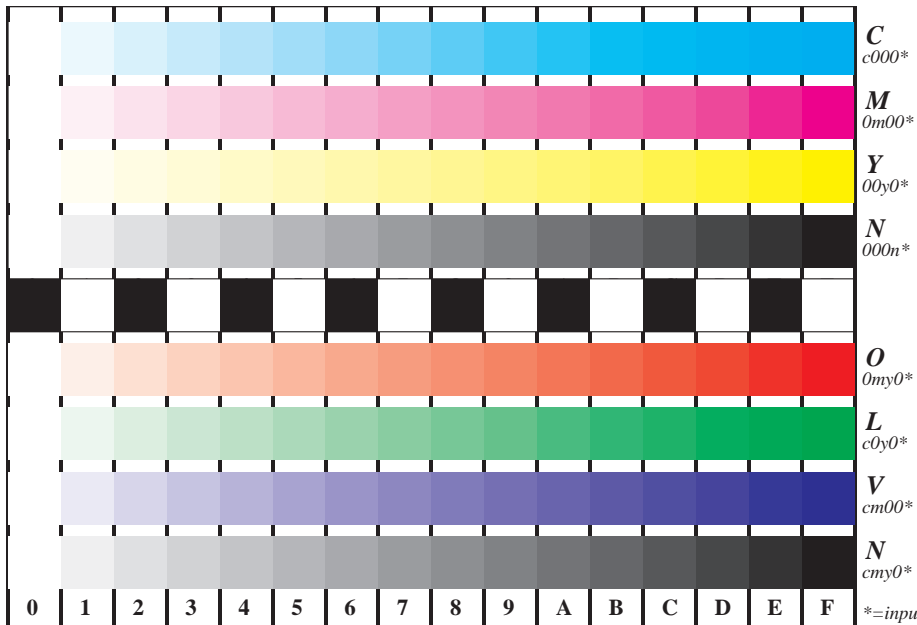


See for similar files: <http://www.ps.bam.de/IE95/IE95.HTM>
 Information and Order: <http://www.ps.bam.de> Version 2.0, io=0,0; iOL,S; oOL,S, CIEXYZ

BAM registration: 20030101-IE95/C95E00F1.PS/.TXT
 application for monitors, Yr=5.0, XYZ
 BAM material: code=thata



Picture B4 and D4: 16 equidistant steps B4: W-C, W-M, W-Y and W-N; D4: W-O, W-L, W-V and W-N(CMY); Use of PS operator; B4: $\text{cmy0}^* / 1000n^*$ setcmykcolor; D4: cmy0^* setcmykcolor (only)

Fig. B4/D4 of ISO/IEC-test chart 2/4; ISO/IEC 15775 and TR ISO/IEC 24705; input: $\text{cmyn}^* \text{ setcmykcolor}$
 output: $\text{cmy0}^* / 1000n^* \text{ setcmykcolor}$