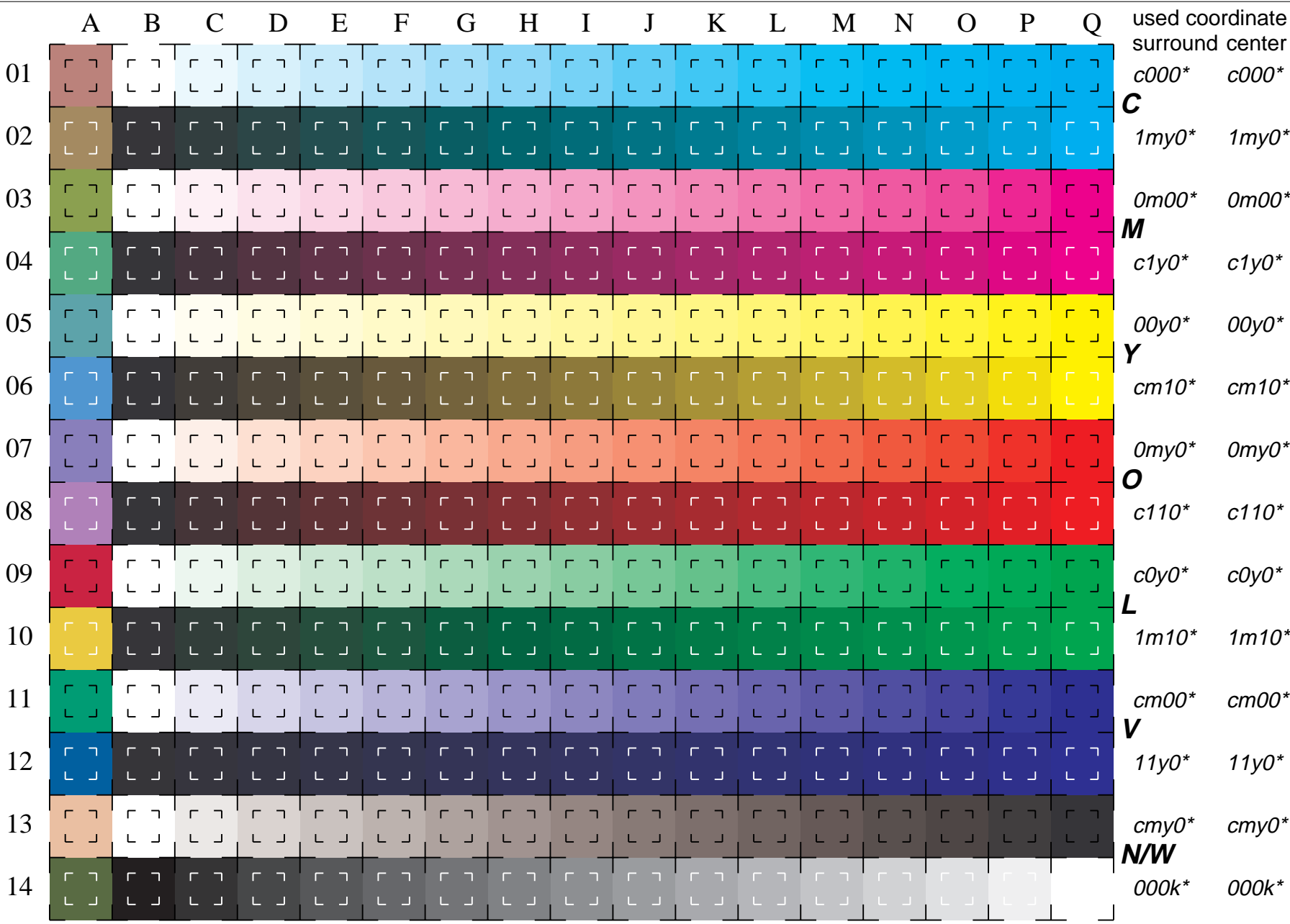




See for similar files: <http://www.ps.bam.de/LE03/LE03.HTM>
 Information and Order: <http://www.ps.bam.de>
 Version 2.0, io=0&0,0?

BAM registration: 20030101-LE03/10Q/Q03E00SP.PS/.PDF
 application for measurement of monitor (Yr=2.5) and printer output
 BAM material: code=tha4ta



used coordinate
 surround center

01	<i>c000*</i>	<i>c000*</i>
02	<i>1my0*</i>	<i>1my0*</i>
03	<i>0m00*</i>	<i>0m00*</i>
04	<i>c1y0*</i>	<i>c1y0*</i>
05	<i>00y0*</i>	<i>00y0*</i>
06	<i>cm10*</i>	<i>cm10*</i>
07	<i>0my0*</i>	<i>0my0*</i>
08	<i>c110*</i>	<i>c110*</i>
09	<i>c0y0*</i>	<i>c0y0*</i>
10	<i>1m10*</i>	<i>1m10*</i>
11	<i>cm00*</i>	<i>cm00*</i>
12	<i>11y0*</i>	<i>11y0*</i>
13	<i>cmY0*</i>	<i>cmY0*</i>
14	<i>000k*</i>	<i>000k*</i>

16 equidistant CIELAB steps: C-W, C-N, M-W, M-N, Y-W, Y-N, O-W, O-N, L-W, L-N, V-W, V-N, N-W, W-N and 14 CIE-test colours (left)

Test chart LE03: 16 CIELAB steps of ISO/IEC 15775
 Chromatic-White, Chromatic-Black, Black-White
 input(ORS18): *cmyn* setcmykcolor (2x)*
 output(ORS18): *Startup (S) data dependend*

