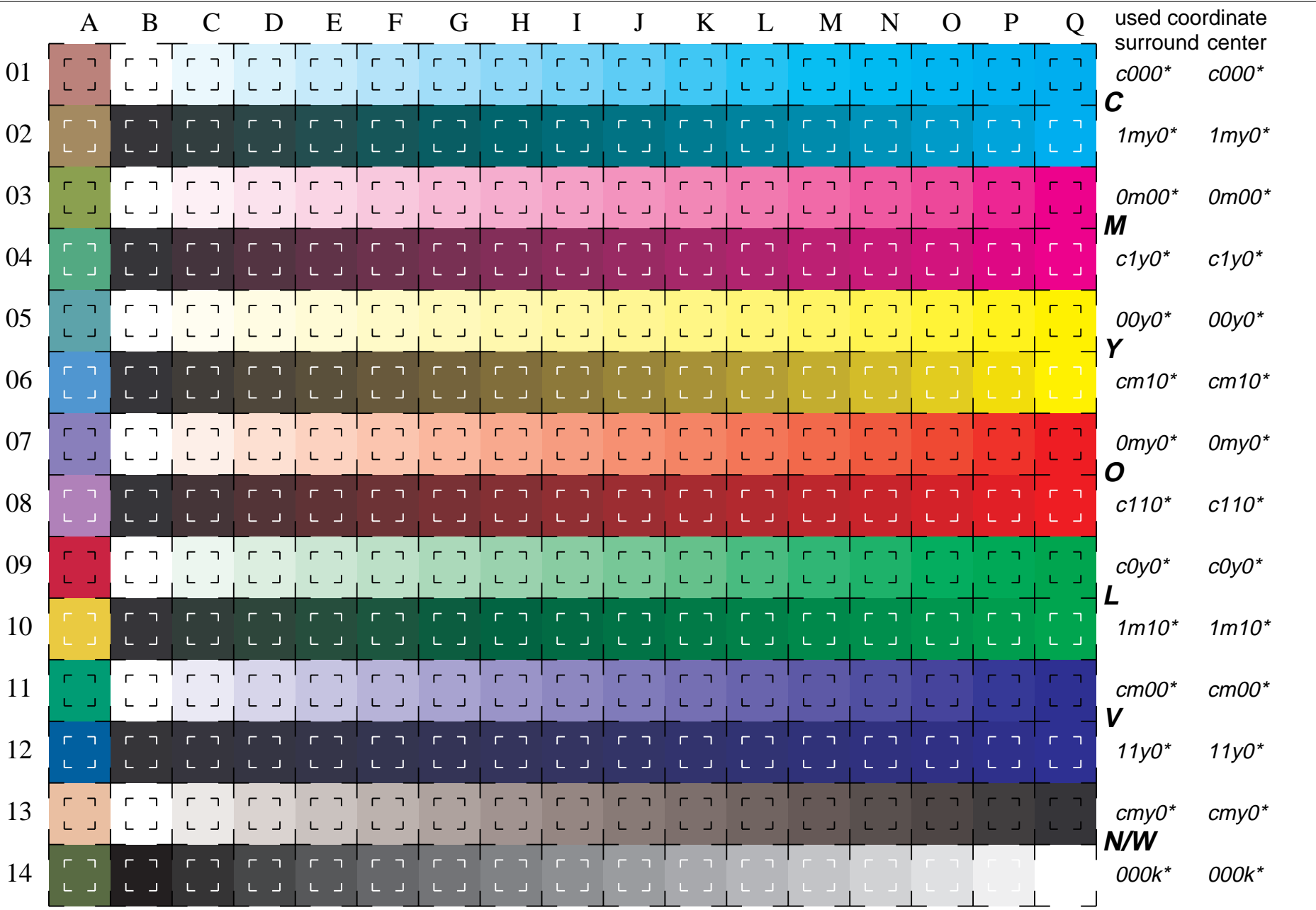
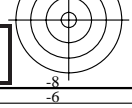
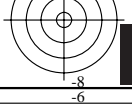


See for similar files: <http://www.ps.bam.de/LE03/LE03.HTM>
 Information and Order: <http://www.ps.bam.de>
 Version 2.0, io=0&0,0&0

BAM registration: 20030101-LE03/10Q/Q03E06NP.PS/.PDF BAM material: code=tha4ta
 application for measurement of monitor (Yr=2.5) and printer output



used coordinate
 surround center
 c000* c000*
C
 1my0* 1my0*
 0m00* 0m00*
M
 c1y0* c1y0*
 00y0* 00y0*
Y
 cm10* cm10*
 0my0* 0my0*
O
 c110* c110*
 c0y0* c0y0*
L
 1m10* 1m10*
 cm00* cm00*
V
 11y0* 11y0*
 cmy0* cmy0*
N/W
 000k* 000k*



16 equidistant CIELAB steps: C-W, C-N, M-W, M-N, Y-W, Y-N, O-W, O-N, L-W, L-N, V-W, V-N, N-W, W-N and 14 CIE-test colours (left)

Test chart LE03: 16 CIELAB steps of ISO/IEC 15775 input(ORS18): *cmyn* setcmykcolor (2x)*
 Chromatic-White, Chromatic-Black, Black-White output(ORS18): *no change compared to input*

