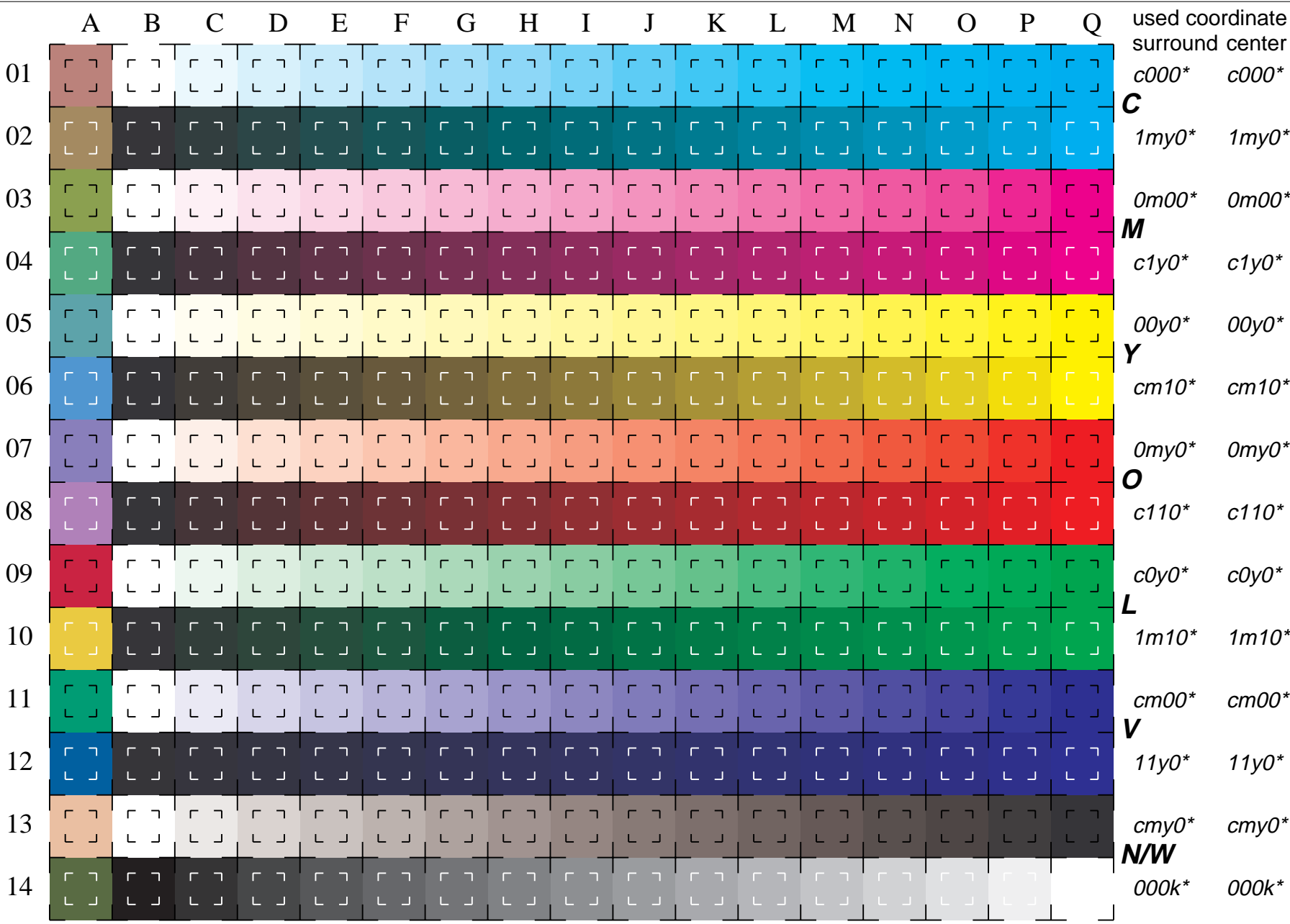
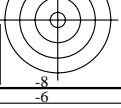
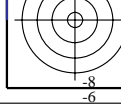


See for similar files: <http://www.ps.bam.de/LE03/LE03.HTM>  
 Information and Order: <http://www.ps.bam.de>  
 Version 2.0, io=0&0,0?

BAM registration: 20030101-LE03/10Q/Q03E06SP.PS/.PDF BAM material: code=tha4ta  
 application for measurement of monitor (Yr=2.5) and printer output



used coordinate  
 surround center  
 c000\* c000\*  
**C**  
 1my0\* 1my0\*  
 0m00\* 0m00\*  
**M**  
 c1y0\* c1y0\*  
 00y0\* 00y0\*  
**Y**  
 cm10\* cm10\*  
 0my0\* 0my0\*  
**O**  
 c110\* c110\*  
 c0y0\* c0y0\*  
**L**  
 1m10\* 1m10\*  
 cm00\* cm00\*  
**V**  
 11y0\* 11y0\*  
 cmy0\* cmy0\*  
**N/W**  
 000k\* 000k\*



16 equidistant CIELAB steps: C-W, C-N, M-W, M-N, Y-W, Y-N, O-W, O-N, L-W, L-N, V-W, V-N, N-W, W-N and 14 CIE-test colours (left)  
 Test chart LE03: 16 CIELAB steps of ISO/IEC 15775 input(ORS18): *cmyn\* setcmykcolor (2x)*  
 Chromatic-White, Chromatic-Black, Black-White output(ORS18): *Startup (S) data dependend*