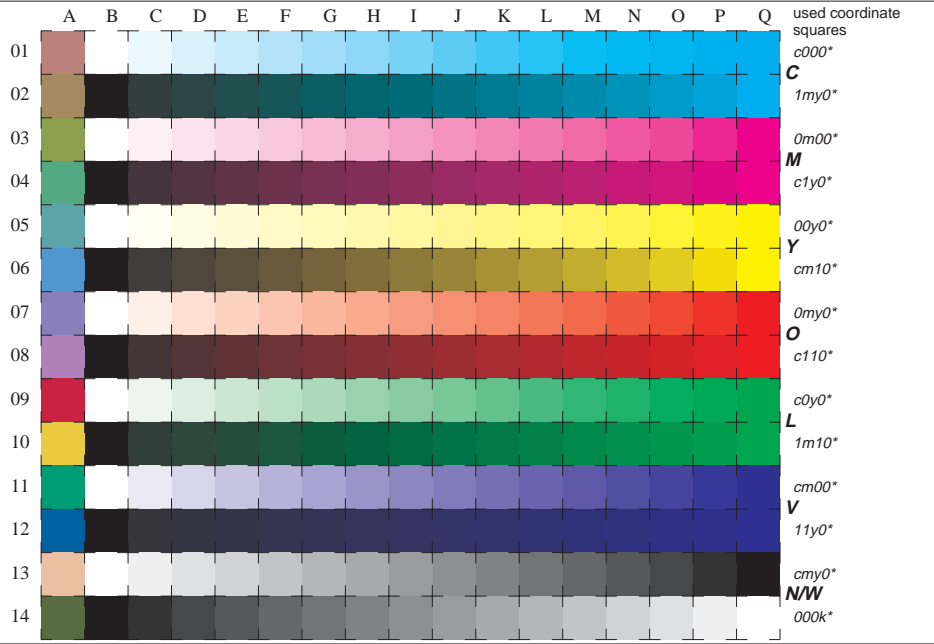


See for similar files: <http://www.ps.bam.de/LE10/LE10.HTM>  
 Information and Order: <http://www.ps.bam.de> Version 2.0, io=0-0; i:TLS; o:TLS, CIELAB



used coordinate squares  
 C 000°  
 1my0°  
 0m00°  
 M c1y0°  
 00y0°  
 Y cm10°  
 0my0°  
 O c110°  
 c0y0°  
 L 1m10°  
 cm00°  
 V 11y0°  
 cm y0°  
 N/W 000k°

16 equidistant CIELAB steps: C-W, C-N, M-W, M-N, Y-W, Y-N, O-W, O-N, L-W, L-N, V-W, V-N, N-W (CMY), W-N and 14 CIE-test colours (left)

Test chart LE10: 16 CIELAB steps of ISO/IEC 15775  
 Chromatic-White, Chromatic-Black, Black-White  
 input ,TLS00: olv\* setrgbcolor/LAB\* setcolor  
 output ,TLS00: cmy0\*/000n\* setcmykcolor

BAM registration: 20030101-LE10/L10E00F1.PS/.TXT  
 application for measurement of monitor (Y1=2.5) and printer output  
 BAM material: code=thata