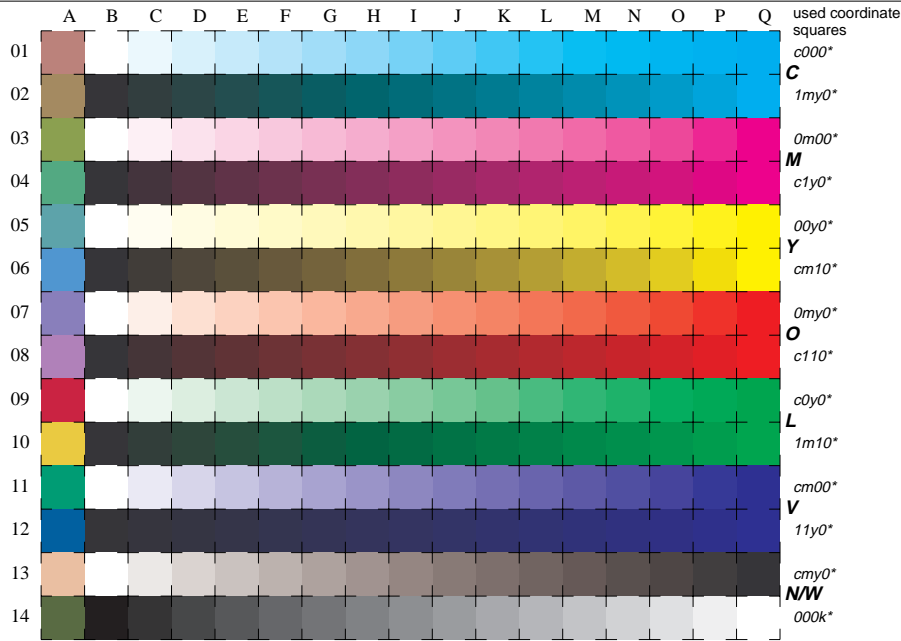


See for similar files: <http://www.ps.bam.de/LE10/LE10.HTM>
 Information and Order: <http://www.ps.bam.de> Version 2.0, io=0.0

BAM registration: 20030101-L10/L10E00N1.PS/.TXT
 application for measurement of monitor (Y=2.5) and printer output
 BAM material: code=thata



16 equidistant CIELAB steps: C-W, C-N, M-W, M-N, Y-W, Y-N, O-W, O-N, L-W, L-N, V-W, V-N, N-W (CMY), W-N and 14 CIE-test colours (left)

Test chart LE10: 16 CIELAB steps of ISO/IEC 15775
 Chromatic-White, Chromatic-Black, Black-White
 input ,TLS00: olv* setrgbcolor/LAB* setcolor
 output ,TLS00: no change compared to input