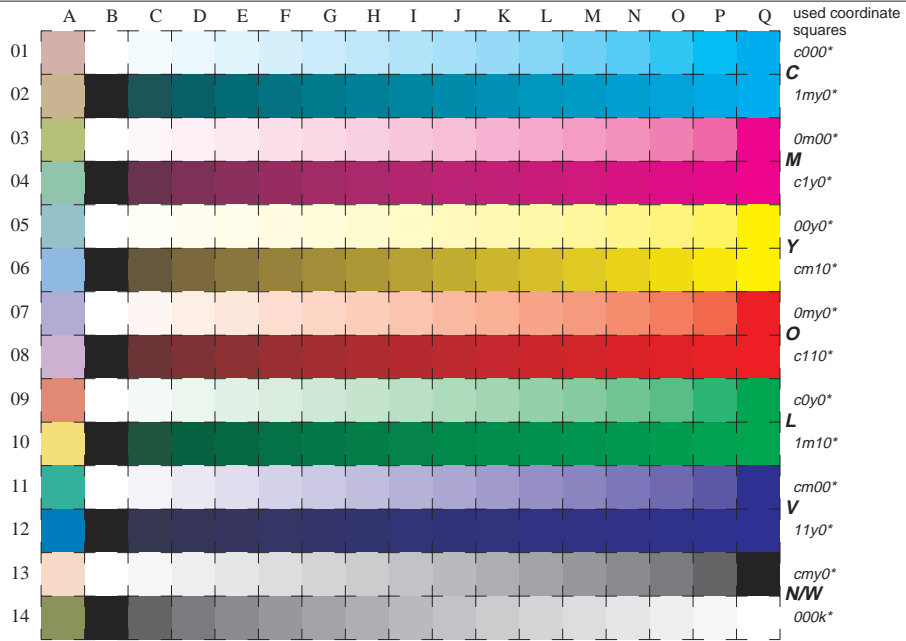


See for similar files: <http://www.ps.bam.de/LE10/10Q/Q10E00F1.PS/.TXT>  
[http://www.ps.bam.de/Version 2.0, io=0, iTLS, oTLS, CIELAB](http://www.ps.bam.de/Version%202.0%2C%20io-0-0%2C%20iTLS%2C%20oTLS%2C%20CIELAB)

BAM registration: 20030101-LE10/10Q/Q10E00F1.PS/.TXT BAM material: code=thata  
 application for measurement of monitor (Y1=2.5) and printer output



16 equidistant CIELAB steps: C-W, C-N, M-W, M-N, Y-W, Y-N, O-W, O-N, L-W, L-N, V-W, V-N, N-W (CMY), W-N and 14 CIE-test colours (left)

Test chart LE10: 16 CIELAB steps of ISO/IEC 15775 input ,TLS00: olv\* setrgbcolor/LAB\* setcolor  
 Chromatic-White, Chromatic-Black, Black-White output ,TLS00: cm y0\*/000n\* setcmykcolor