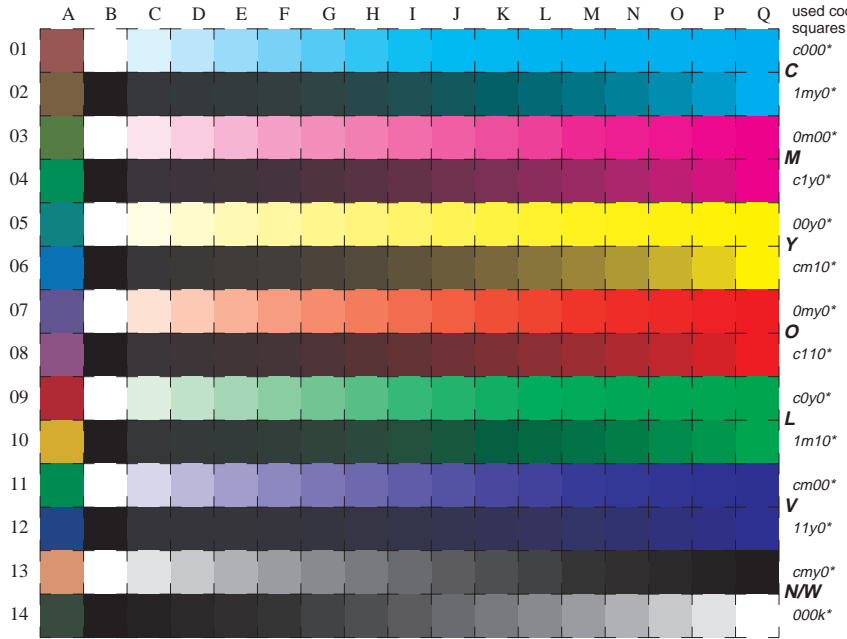


See for similar files: <http://www.ps.bam.de/LE10/LE10.HTM>  
Information and Order: <http://www.ps.bam.de> Version 2.0, io=0-0; i:TLS; o:TLS, CIELAB



16 equidistant CIELAB steps: C-W, C-N, M-W, M-N, Y-W, Y-N, O-W, O-N, L-W, L-N, V-W, V-N, N-W (CMY), W-N and 14 CIE-test colours (left)

Test chart LE10: 16 CIELAB steps of ISO/IEC 15775 input ,TLS00: *olv\* setrgbcolor/LAB\* setcolor*  
Chromatic-White, Chromatic-Black, Black-White output ,TLS00: *cmY0\*/000n\* setcmykcolor*

BAM registration: 20030101-LE10/10S/S10E00F1.PS/.TXT BAM material: code=thata  
application for measurement of monitor (Y1=2.5) and printer output