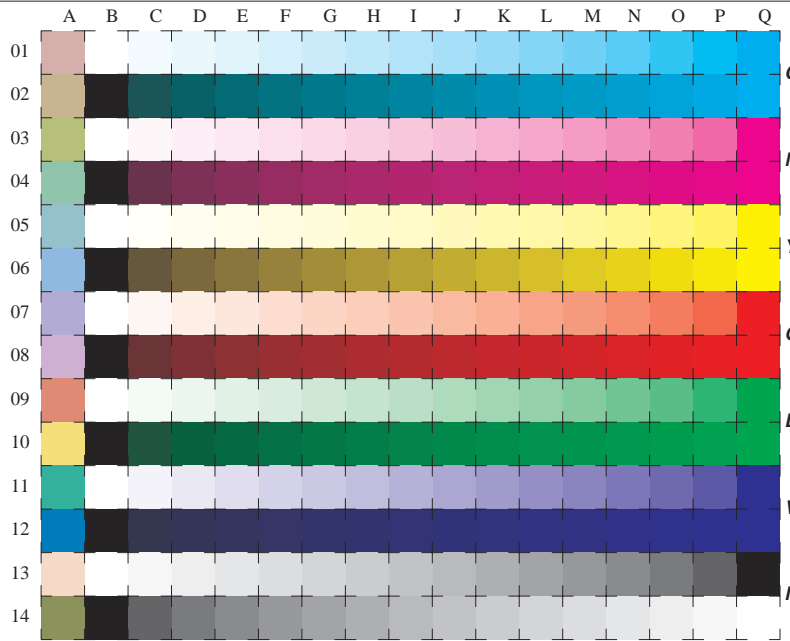


See for similar files: <http://www.ps.bam.de/LE11/LE11.HTM>  
 Information and Order: <http://www.ps.bam.de> Version 2.0, io=0.0; iTLS; oTLS, CIELAB



used coordinate squares  
 011\*  
**C**  
 01v\*  
 111\*  
**M**  
 00v\*  
 11v\*  
**Y**  
 010\*  
 11v\*  
**O**  
 000\*  
 01v\*  
**L**  
 010\*  
 011\*  
**V**  
 00v\*  
 01v\*  
**N/W**  
 w\*

16 equidistant CIELAB steps: C-W, C-N, M-W, M-N, Y-W, Y-N, O-W, O-N, L-W, L-N, V-W, V-N, N-W (OLV). W-N and 14 CIE-test colours (left)

Test chart LE11: 16 CIELAB steps of ISO/IEC 15775  
 Chromatic-White, Chromatic-Black, Black-White  
 input ,TLS00: olv\* setrgbcolor/LAB\* setcolor  
 output ,TLS00: cmy0\*/000n\* setcmykcolor

BAM registration: 20030101-LE11/10Q/Q11E00F1.PS/.TXT BAM material: code=th4ta  
 application for measurement of monitor (Y1=2.5) and printer output