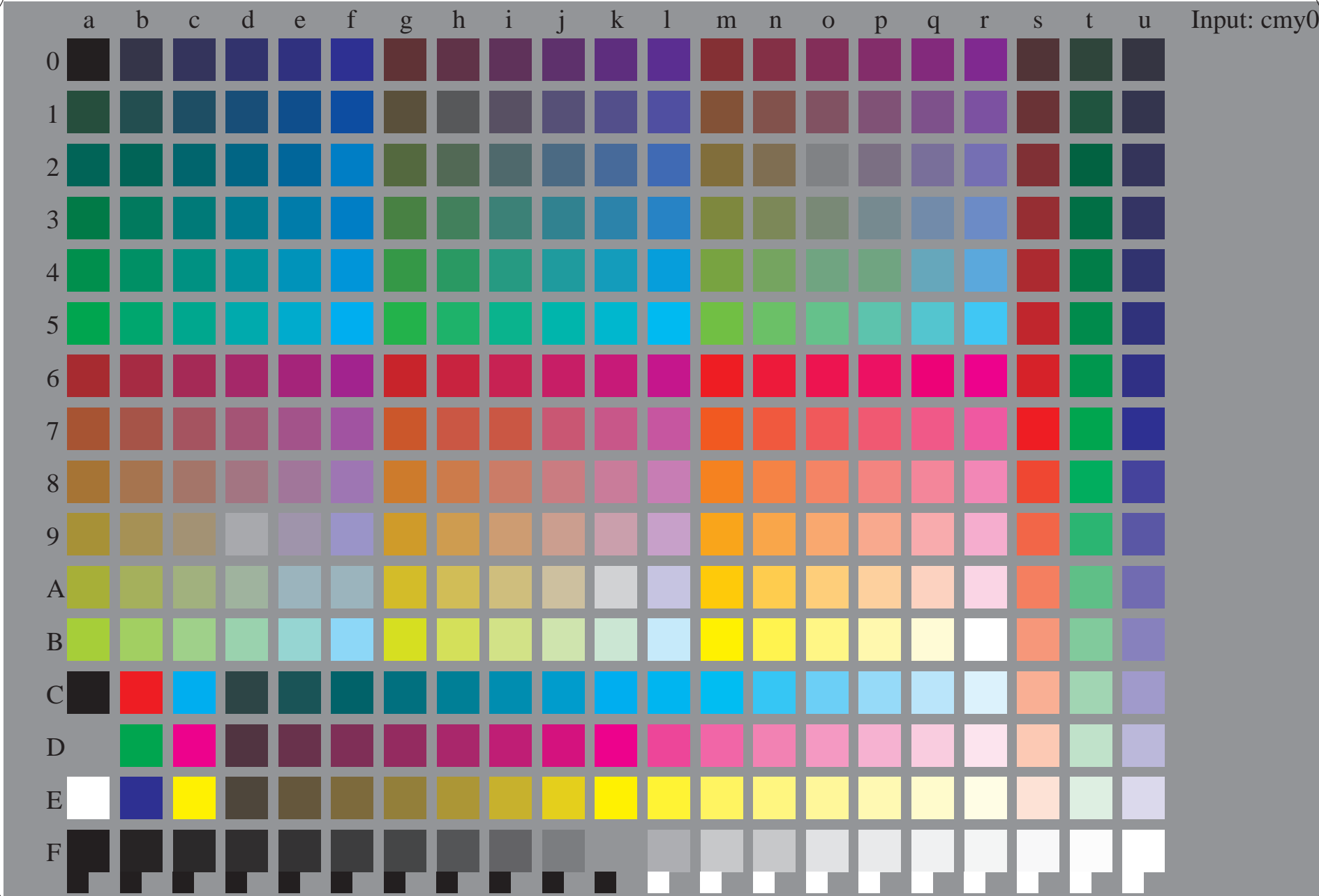


See for similar files: <http://www.ps.bam.de/LE24/LE24.HTM>
Information and Order: <http://www.ps.bam.de> Version 2.0, io=0,0; iORS; oORS, CIELAB

BAM registration: 20040801-LE24/10L/L24E00FP.PS/.PDF
application for measurement of printer systems
BAM material: code=tha4ta



Test chart file with 336 colours defined in IEC/WD 61966-7-1:2004; cmy0 colour coordinates

BAM-test chart LE24:
336 colours are used, defined in IEC 61966-7-1:1999

input: *cmy0 setcmycolor*
output: *cmy0* / 000n* setcmycolor*

