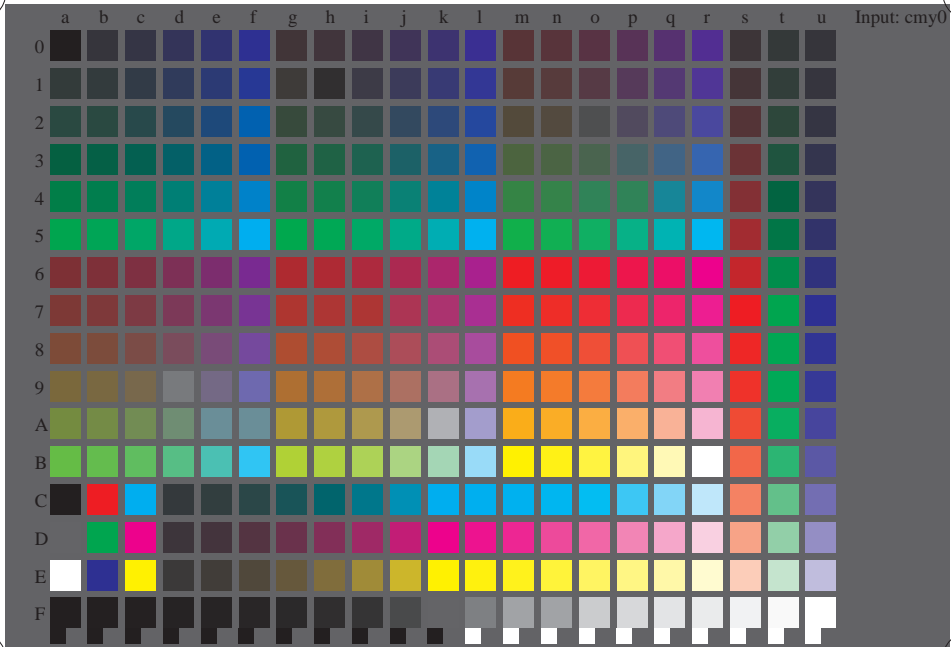


See for similar files: <http://www.ps.bam.de/LE24/LE24.HTM>
Information and Order: <http://www.ps.bam.de> Version 2.0, io=0, iORS, oORS, CIELAB



Test chart file with 336 colours defined in IEC/WD 61966-7-1:2004; cmy0 colour coordinates

BAM-test chart LE24:
336 colours are used, defined in IEC 61966-7-1:1999
input: *cmy0 setcmycolor*
output: *cmy0*/000n* setcmycolor*

BAM registration: 2004/08/01-LE24/10S/S24E00F1.PS/.TXT
application for measurement of printer systems
BAM material: code=thata