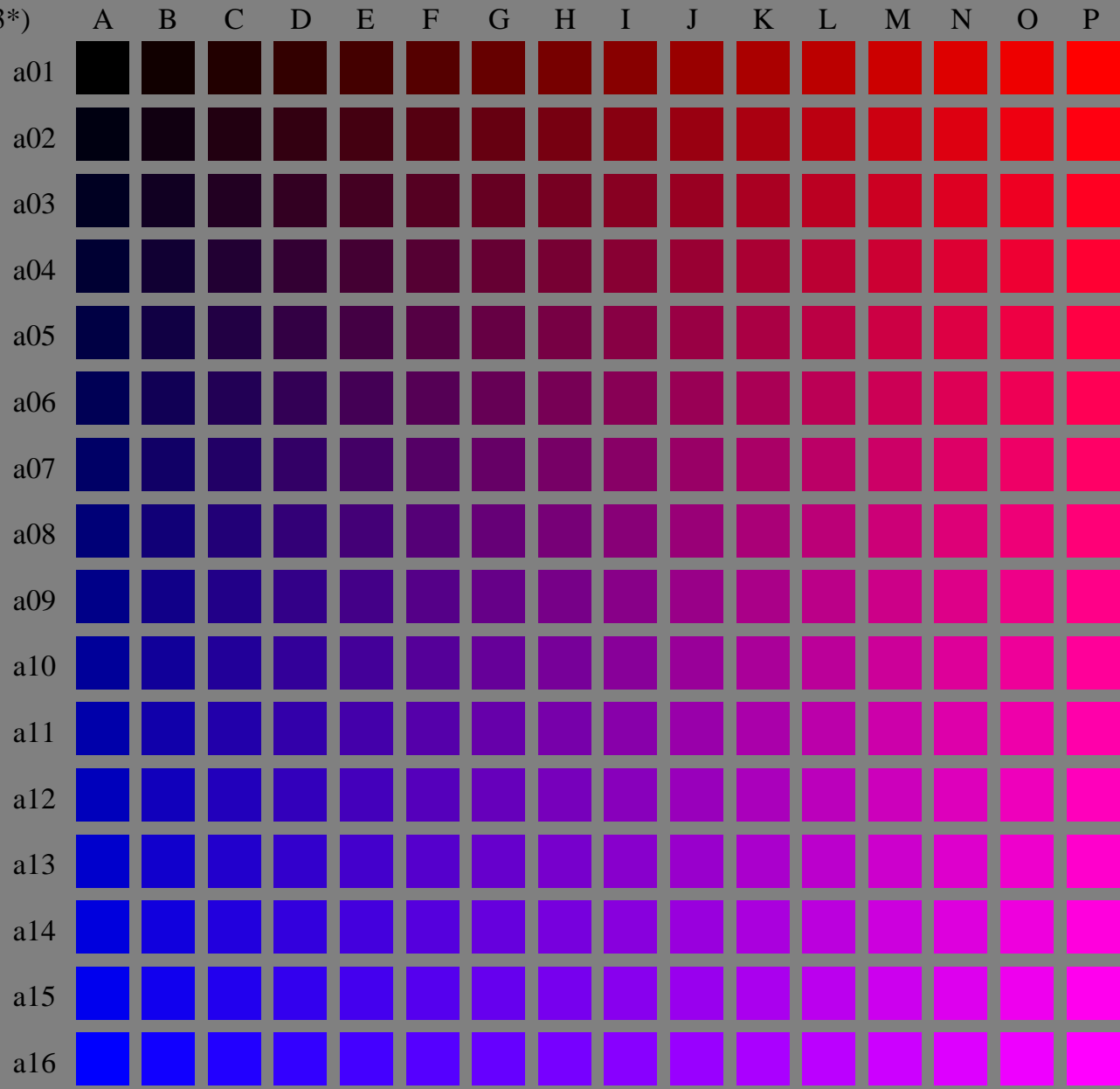


(olv3* = o3*, 0.0, v3*)

(olv3* = 1, 0.0, 0)

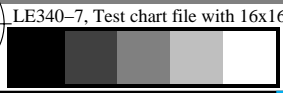


(olv3* = 0, 0.0, 1)

See for similar files: <http://www.ps.bam.de/LE34/>
Technical information: <http://www.ps.bam.de>
Version 2.1, io=1,1

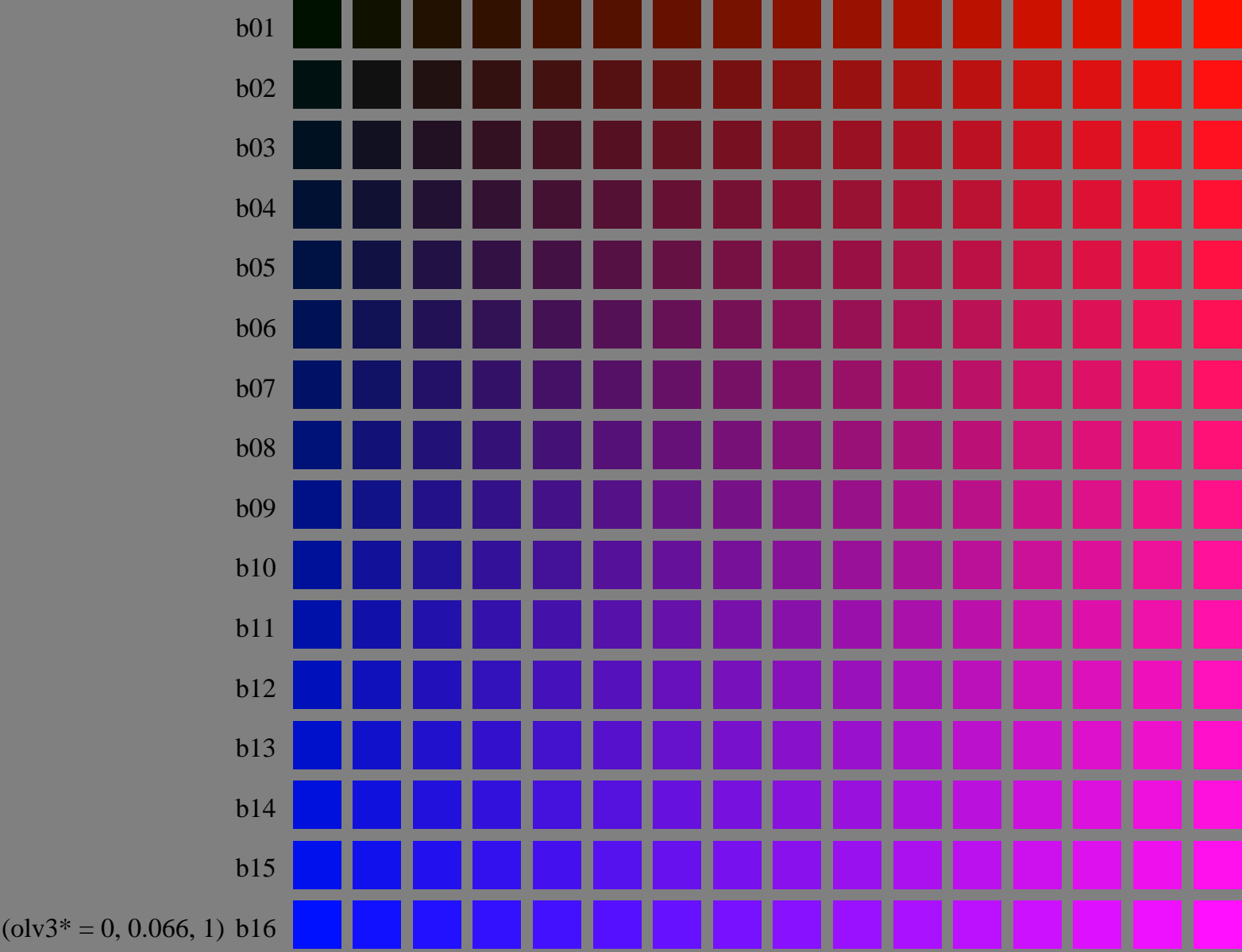
BAM registration: 20050501-LE34/10L/L34E00NP.PS/.PDF
application for measurement of printer systems
BAM material: code=rh4ta

LE34 Form: 1/16, Serie: 1/1, Page: 1, Page count: 1



(olv3* = o3*, 0.066, v3*)

(olv3* = 1, 0.066, 0)



(olv3* = 0, 0.066, 1)

See for similar files: <http://www.ps.bam.de/LE34/>
Technical information: <http://www.ps.bam.de>

Version 2.1, io=1,1

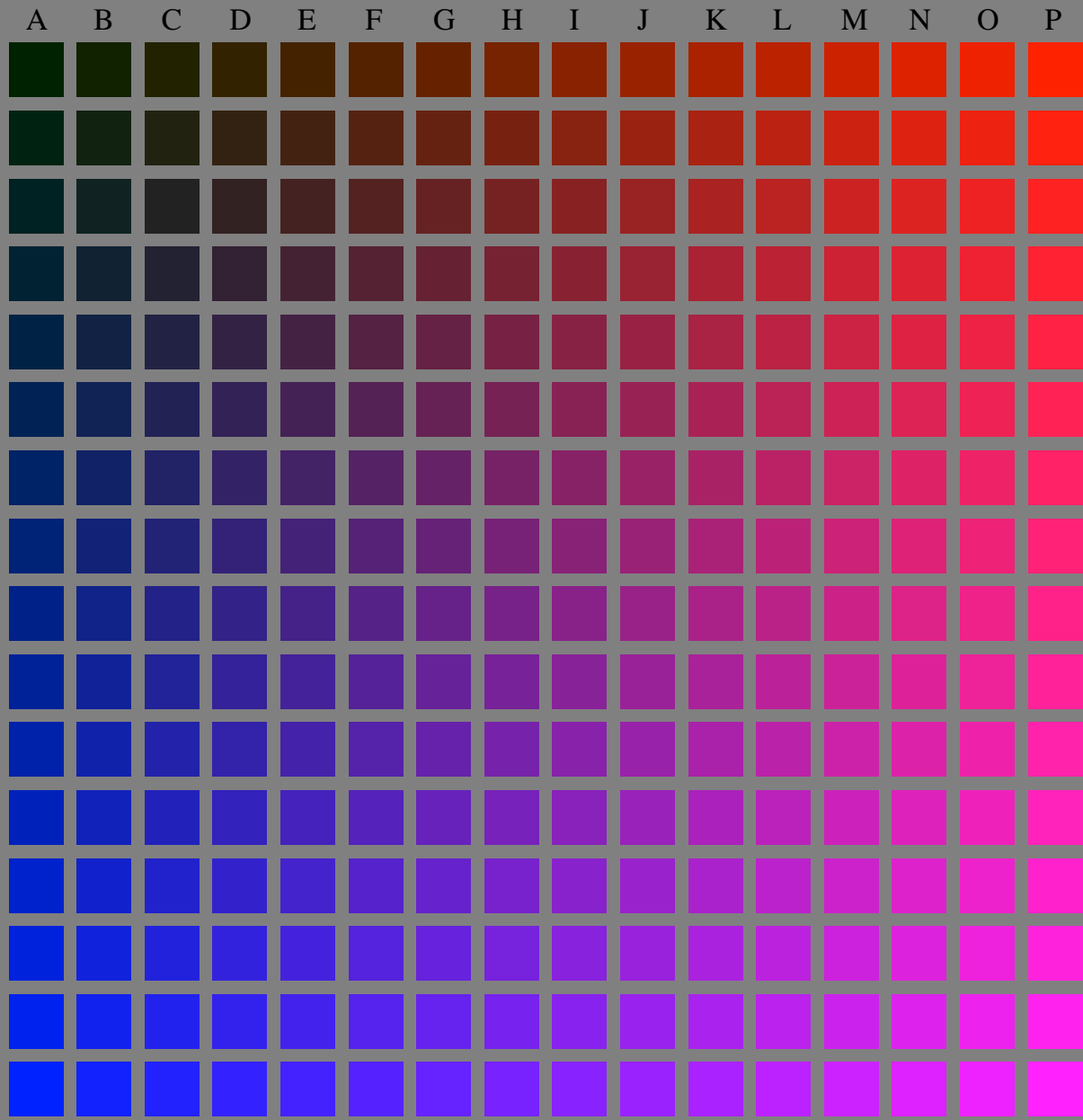
BAM registration: 20050501-LE34/10L/L34E01NP.PS/.PDF
application for measurement of printer systems

BAM material: code=rh4ta
/LE34/ Form: 2/16, Serie: 1/1, Page: 2, Page count: 2

(olv3* = o3*, 0.133, v3*)

(olv3* = 1, 0.133, 0)

(olv3* = 0, 0.133, 1)



See for similar files: <http://www.ps.bam.de/LE34/>
Technical information: <http://www.ps.bam.de>
Version 2.1, io=1,1

BAM registration: 20050501-LE34/10L/L34E02NP.PS/.PDF
application for measurement of printer systems

LE34 Form: 3/16, Serie: 1/1, Page: 3, Page count: 3
BAM material: code=rh4ta

(olv3* = o3*, 0.2, v3*)

(olv3* = 1, 0.2, 0)

(olv3* = 0, 0.2, 1)

See for similar files: <http://www.ps.bam.de/LE34/>
Technical information: <http://www.ps.bam.de>
Version 2.1, io=1,1

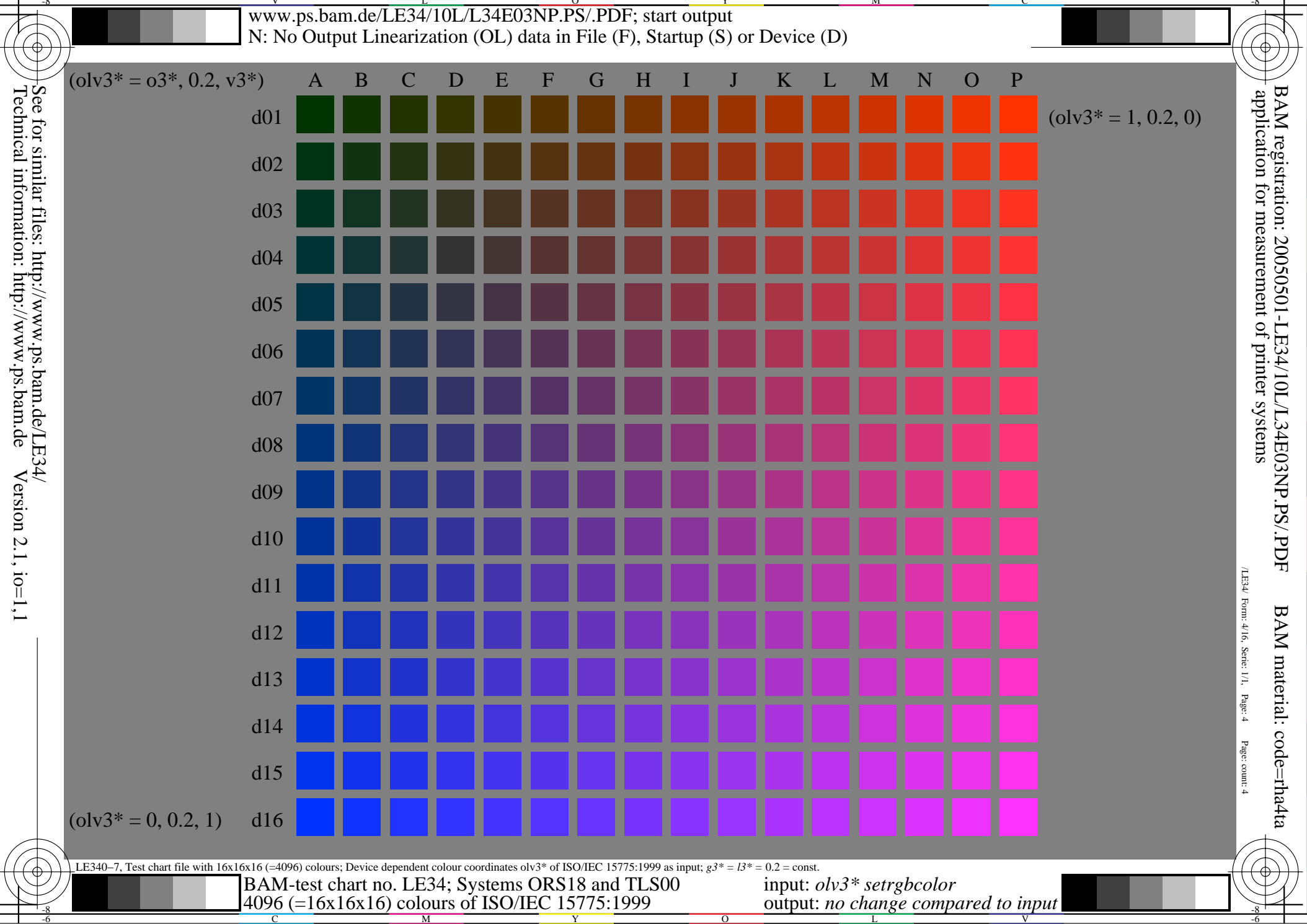
BAM registration: 20050501-LE34/10L/L34E03NP.PS/.PDF
application for measurement of printer systems

BAM material: code=rh4ta
/LE34 Form: 4/16, Serie: 1/1, Page: 4 Page count: 4

LE340-7, Test chart file with 16x16x16 (=4096) colours; Device dependent colour coordinates olv3* of ISO/IEC 15775:1999 as input; g3* = l3* = 0.2 = const.

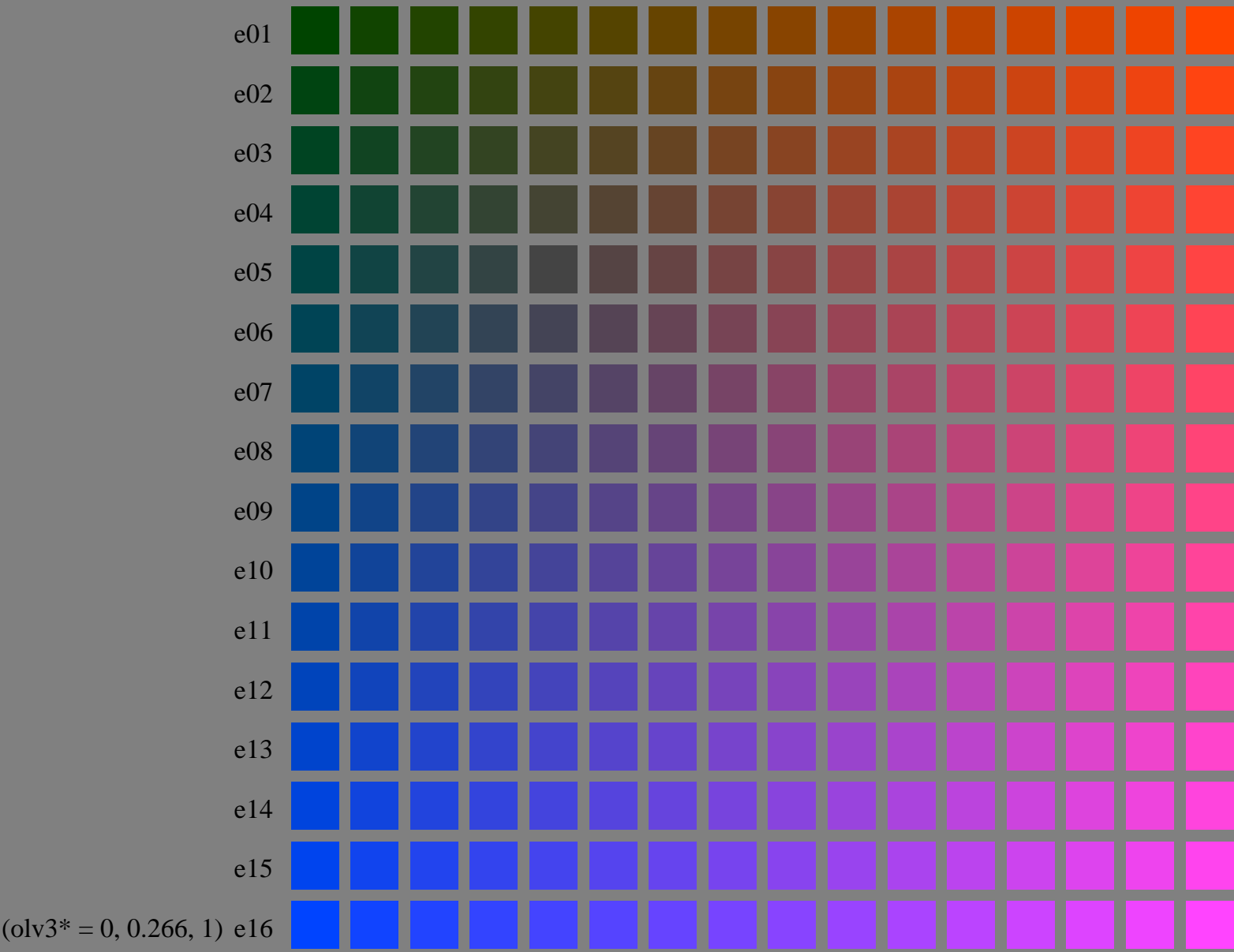
BAM-test chart no. LE34; Systems ORS18 and TLS00
4096 (=16x16x16) colours of ISO/IEC 15775:1999

input: olv3* setrgbcolor
output: no change compared to input



(olv3* = o3*, 0.266, v3*)

(olv3* = 1, 0.266, 0)



(olv3* = 0, 0.266, 1)

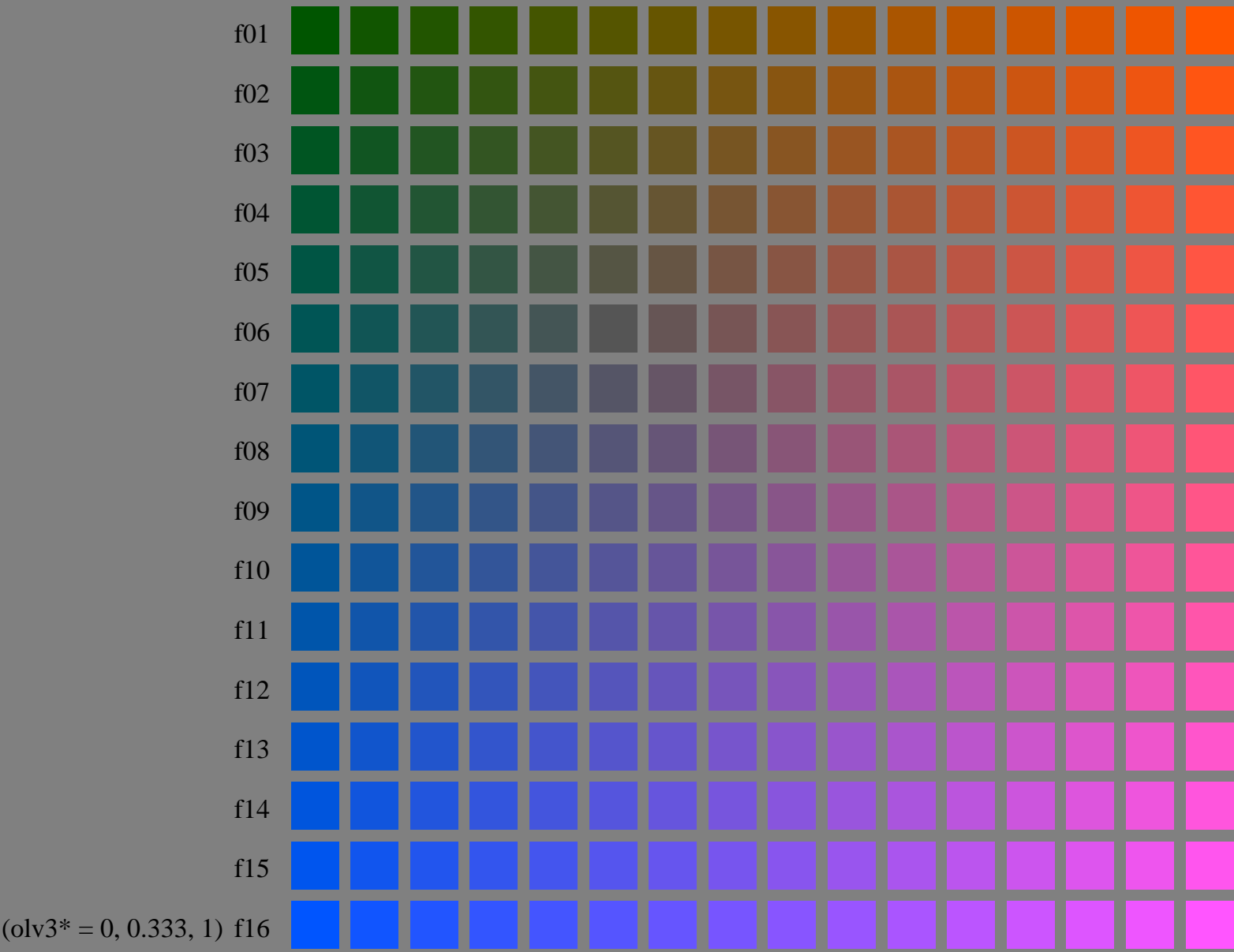
See for similar files: <http://www.ps.bam.de/LE34/>
Technical information: <http://www.ps.bam.de>
Version 2.1, io=1,1

BAM registration: 20050501-LE34/10L/L34E04NP.PS/.PDF
application for measurement of printer systems
BAM material: code=rh4ta

LE34 Form: 5/16, Serie: 1/1, Page: 5, Page count: 5

(olv3* = o3*, 0.333, v3*)

(olv3* = 1, 0.333, 0)



(olv3* = 0, 0.333, 1)

LE340-7, Test chart file with 16x16x16 (=4096) colours; Device dependent colour coordinates olv3* of ISO/IEC 15775:1999 as input; g3* = l3* = 0.333 = const.

BAM-test chart no. LE34; Systems ORS18 and TLS00
4096 (=16x16x16) colours of ISO/IEC 15775:1999

input: olv3* setrgbcolor
output: no change compared to input

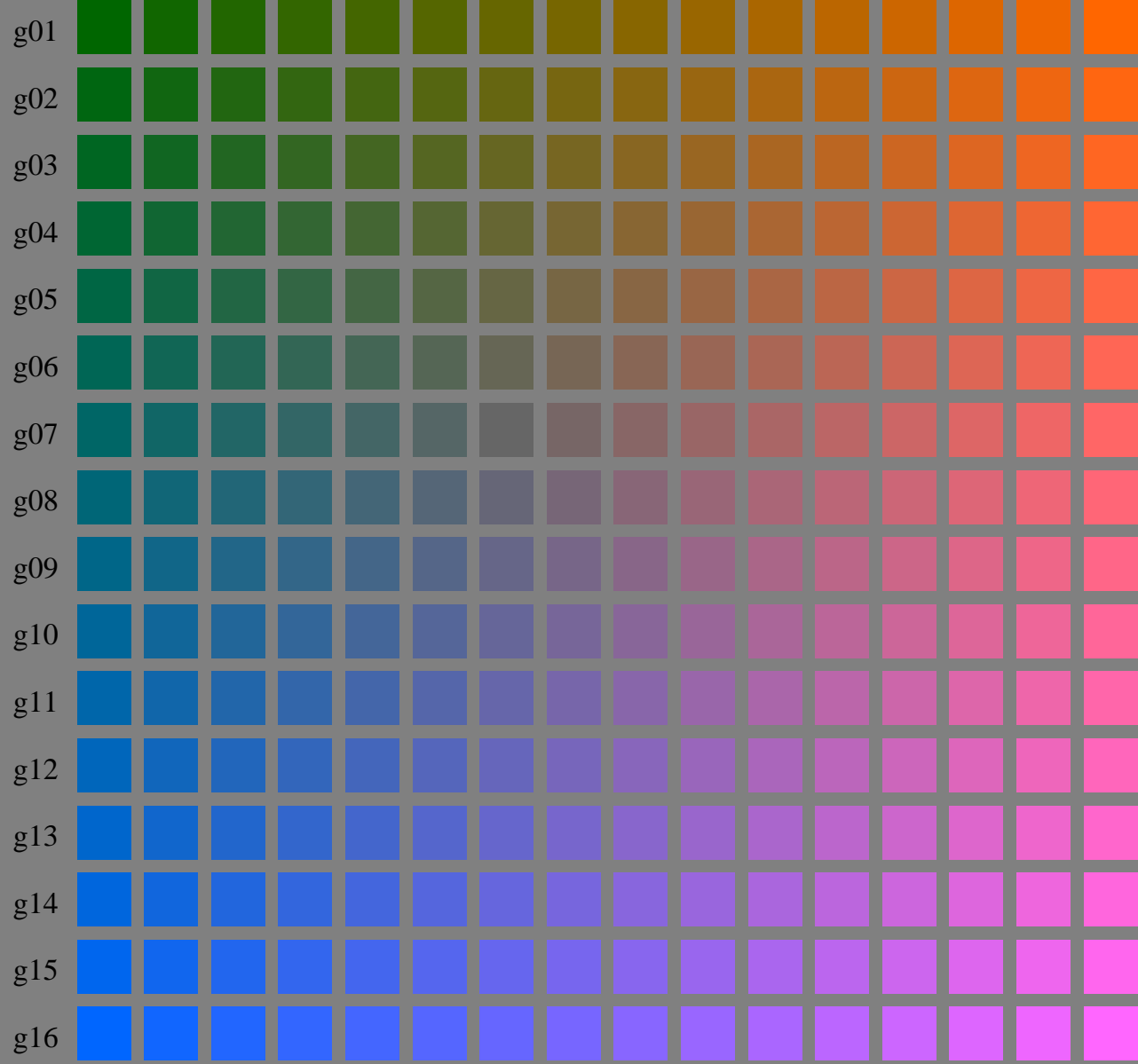
See for similar files: <http://www.ps.bam.de/LE34/>
Technical information: <http://www.ps.bam.de>
Version 2.1, io=1,1

BAM registration: 20050501-LE34/10L/L34E05NP.PS/.PDF
application for measurement of printer systems
/LE34/ Form: 6/16, Serie: 1/1, Page: 6 Page count: 6

BAM material: code=rh4ta

(olv3* = 0.3*, 0.4, v3*)

(olv3* = 1, 0.4, 0)



(olv3* = 0, 0.4, 1)

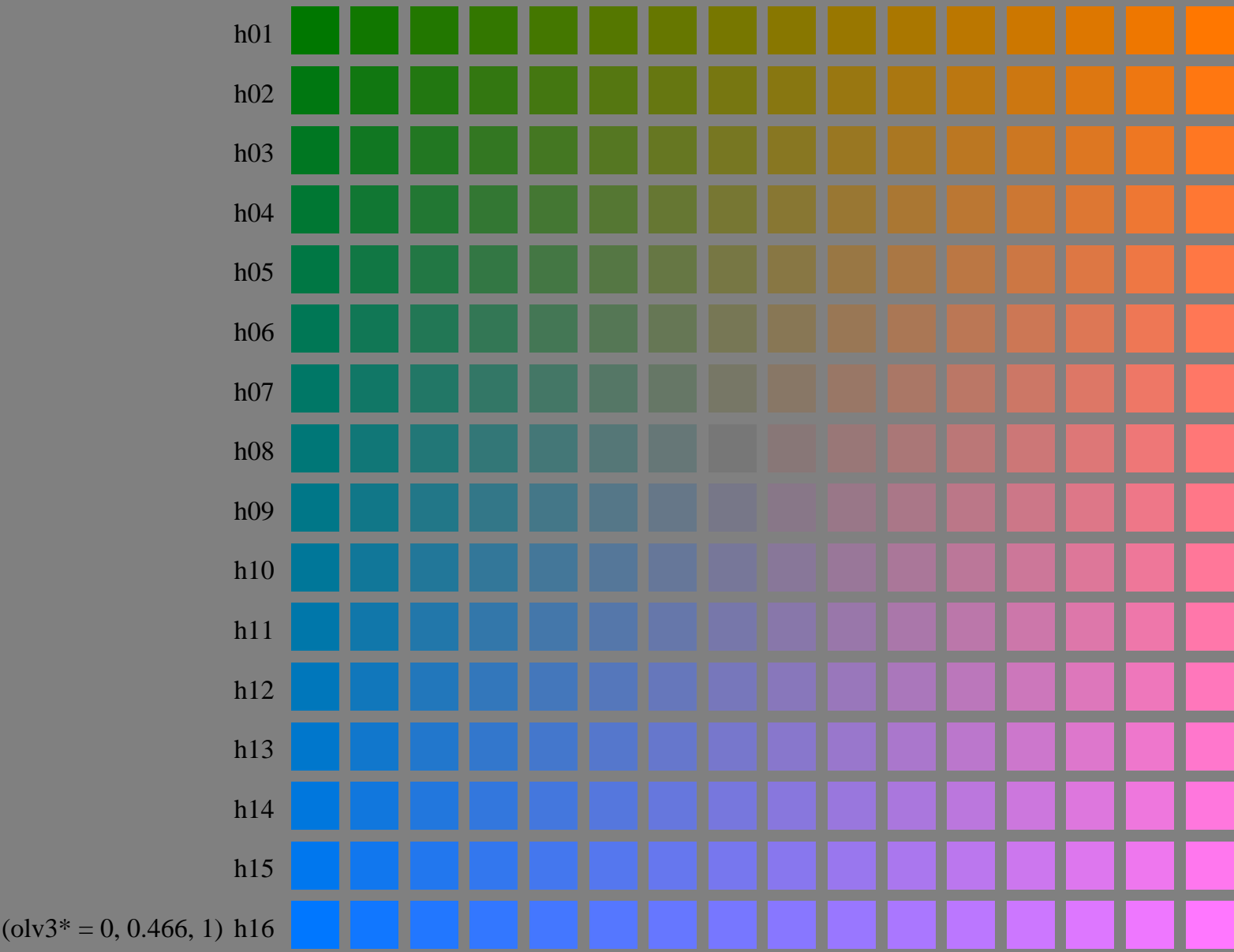
See for similar files: <http://www.ps.bam.de/LE34/>
Technical information: <http://www.ps.bam.de>
Version 2.1, io=1,1

BAM registration: 20050501-LE34/10L/L34E06NP.PS/.PDF
application for measurement of printer systems
BAM material: code=rh4ta

LE34 Form: 7/16, Serie: 1/1, Page: 7, Page count: 7

(olv3* = o3*, 0.466, v3*)

(olv3* = 1, 0.466, 0)



(olv3* = 0, 0.466, 1)

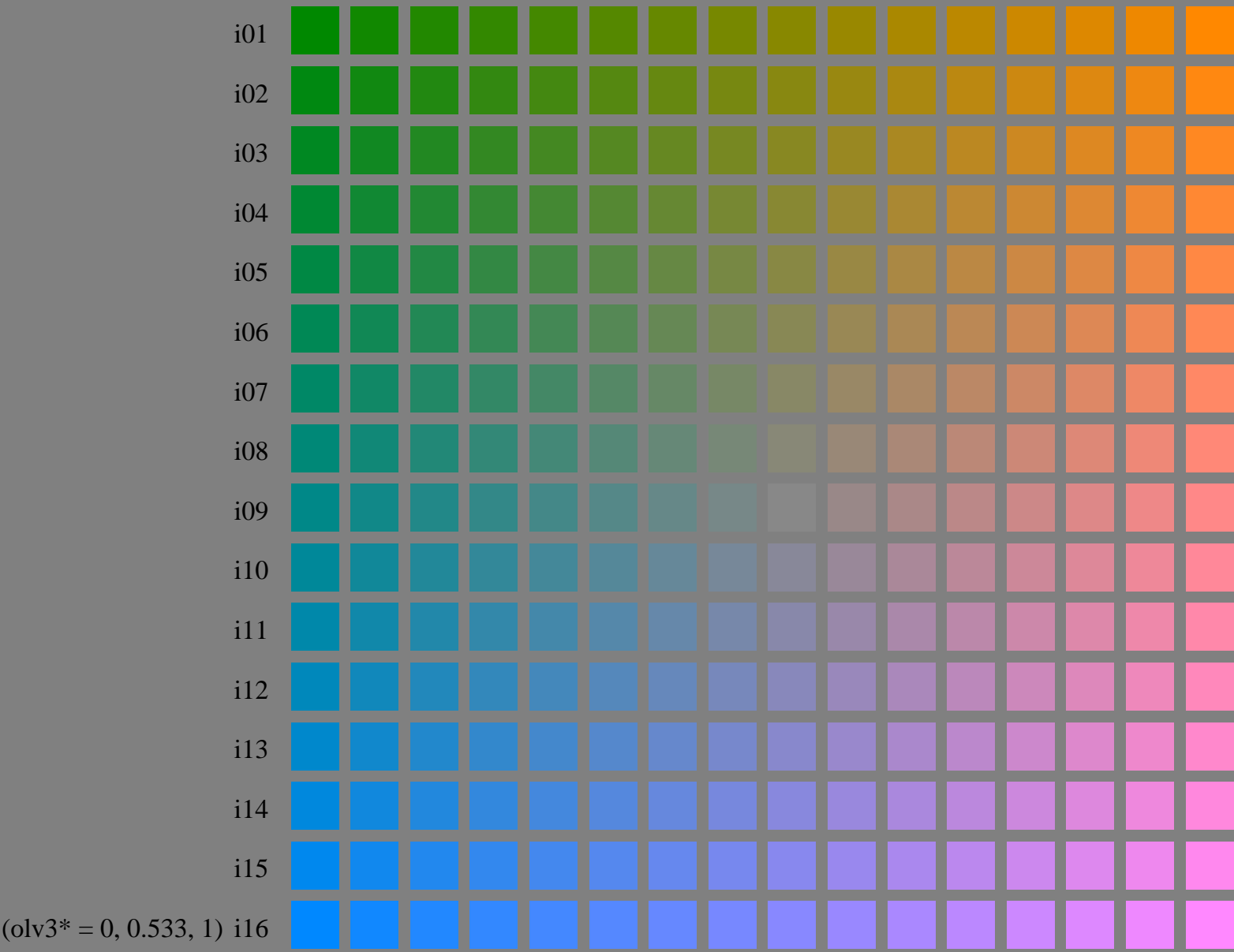
See for similar files: <http://www.ps.bam.de/LE34/>
Technical information: <http://www.ps.bam.de>
Version 2.1, io=1,1

BAM registration: 20050501-LE34/10L/L34E07NP.PS/.PDF
application for measurement of printer systems
BAM material: code=rh4ta

/LE34/ Form: 8/16, Serie: 1/1, Page: 8
Page count: 8

(olv3* = o3*, 0.533, v3*)

(olv3* = 1, 0.533, 0)

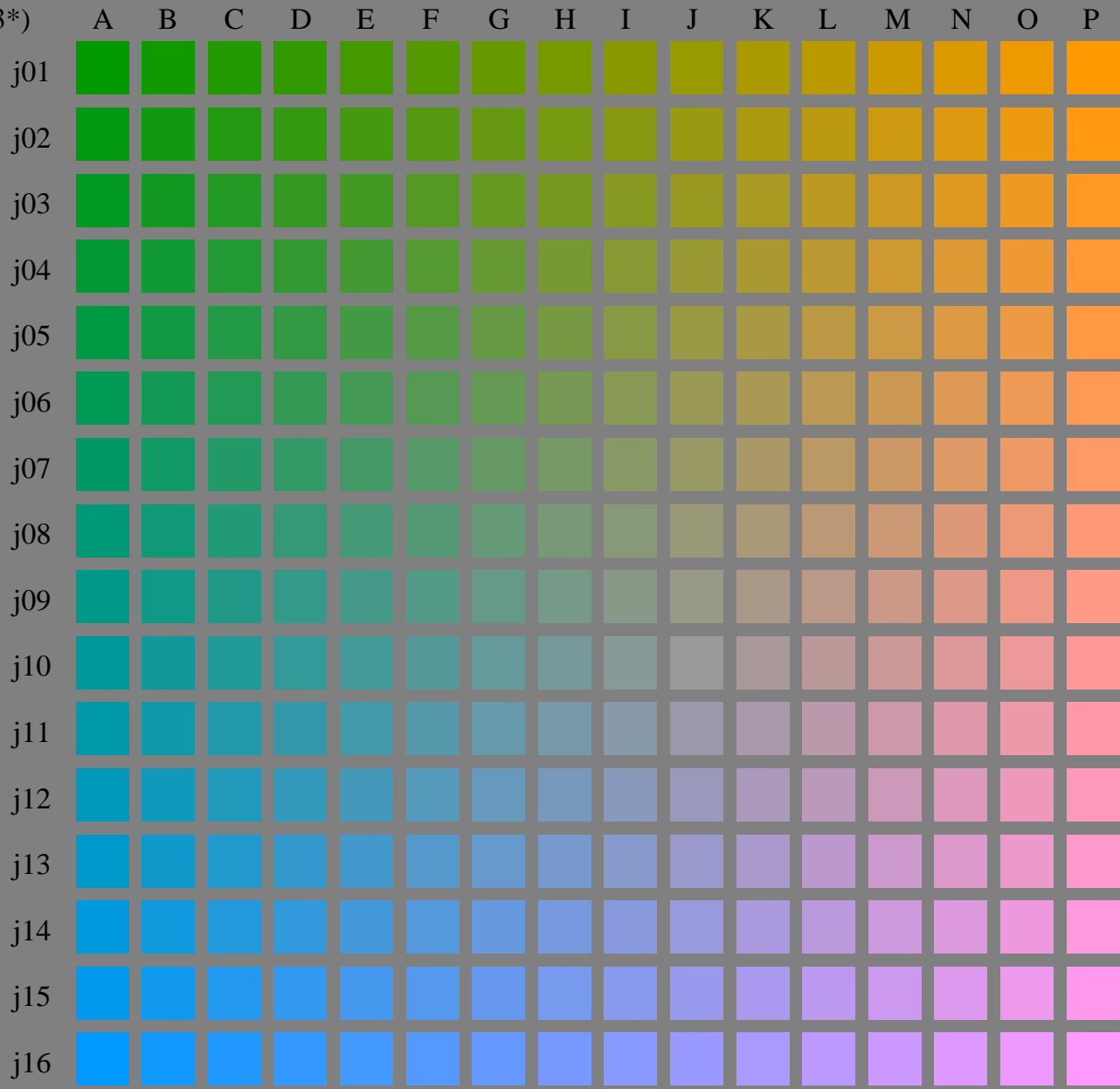


See for similar files: <http://www.ps.bam.de/LE34/>
Technical information: <http://www.ps.bam.de>
Version 2.1, io=1,1

BAM registration: 20050501-LE34/10L/L34E08NP.PS/.PDF
application for measurement of printer systems
BAM material: code=rh4ta
/LE34/ Form: 9/16, Serie: 1/1, Page: 9 Page count: 9

(olv3* = o3*, 0.6, v3*)

(olv3* = 1, 0.6, 0)



(olv3* = 0, 0.6, 1)

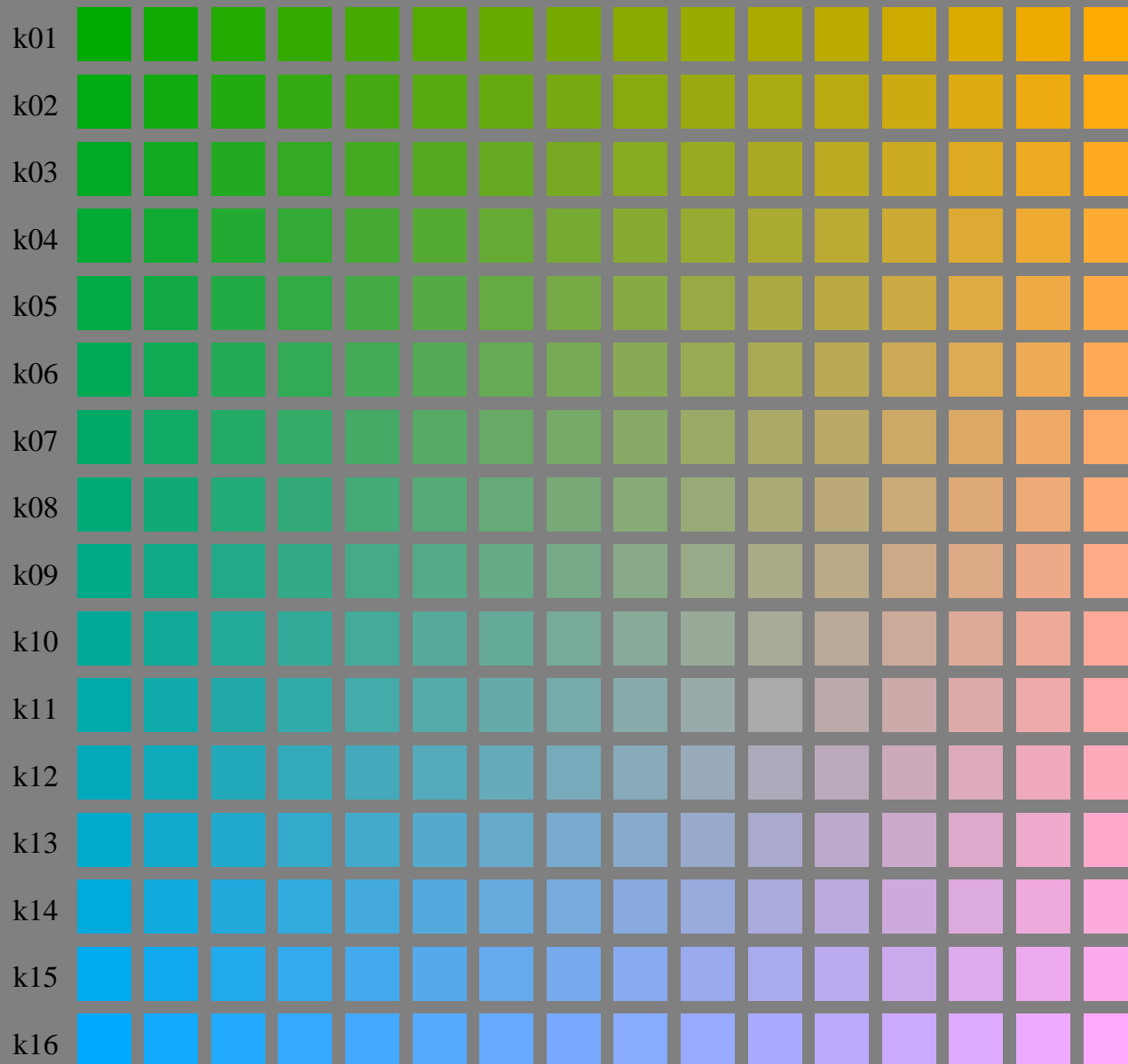
See for similar files: <http://www.ps.bam.de/LE34/>
Technical information: <http://www.ps.bam.de>
Version 2.1, io=1,1

BAM registration: 20050501-LE34/10L/L34E09NP.PS/.PDF
application for measurement of printer systems
/LE34/ Form: 10/16; Serie: 1/1, Page: 10, Page count: 10

BAM material: code=rh4ta

($olv3^* = o3^*, 0.666, v3^*$)

($olv3^* = 1, 0.666, 0$)



($olv3^* = 0, 0.666, 1$)

See for similar files: <http://www.ps.bam.de/LE34/>
Technical information: <http://www.ps.bam.de>

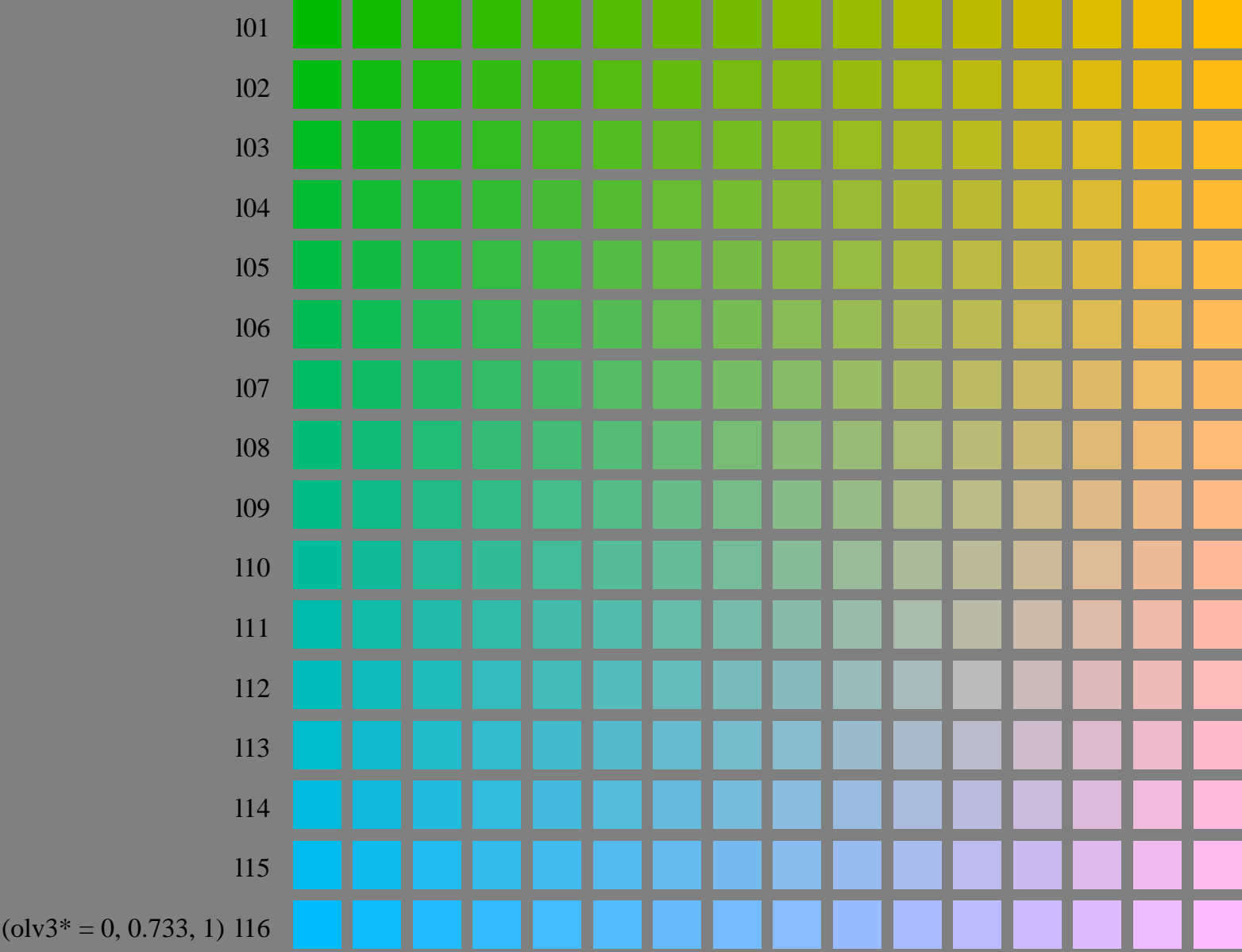
Version 2.1, io=1,1

BAM registration: 20050501-LE34/10L/L34E0ANP.PS/.PDF
application for measurement of printer systems

BAM material: code=rh4ta
/LE34/ Form: 11/16; Serie: 1/1, Page: 11, Page count: 11

($olv3^* = o3^*, 0.733, v3^*$)

($olv3^* = 1, 0.733, 0$)



($olv3^* = 0, 0.733, 1$)

LE340-7, Test chart file with 16x16x16 (=4096) colours; Device dependent colour coordinates $olv3^*$ of ISO/IEC 15775:1999 as input; $g3^* = l3^* = 0.733 = \text{const.}$

BAM-test chart no. LE34; Systems ORS18 and TLS00
4096 (=16x16x16) colours of ISO/IEC 15775:1999

input: $olv3^*$ setrgbcolor
output: no change compared to input

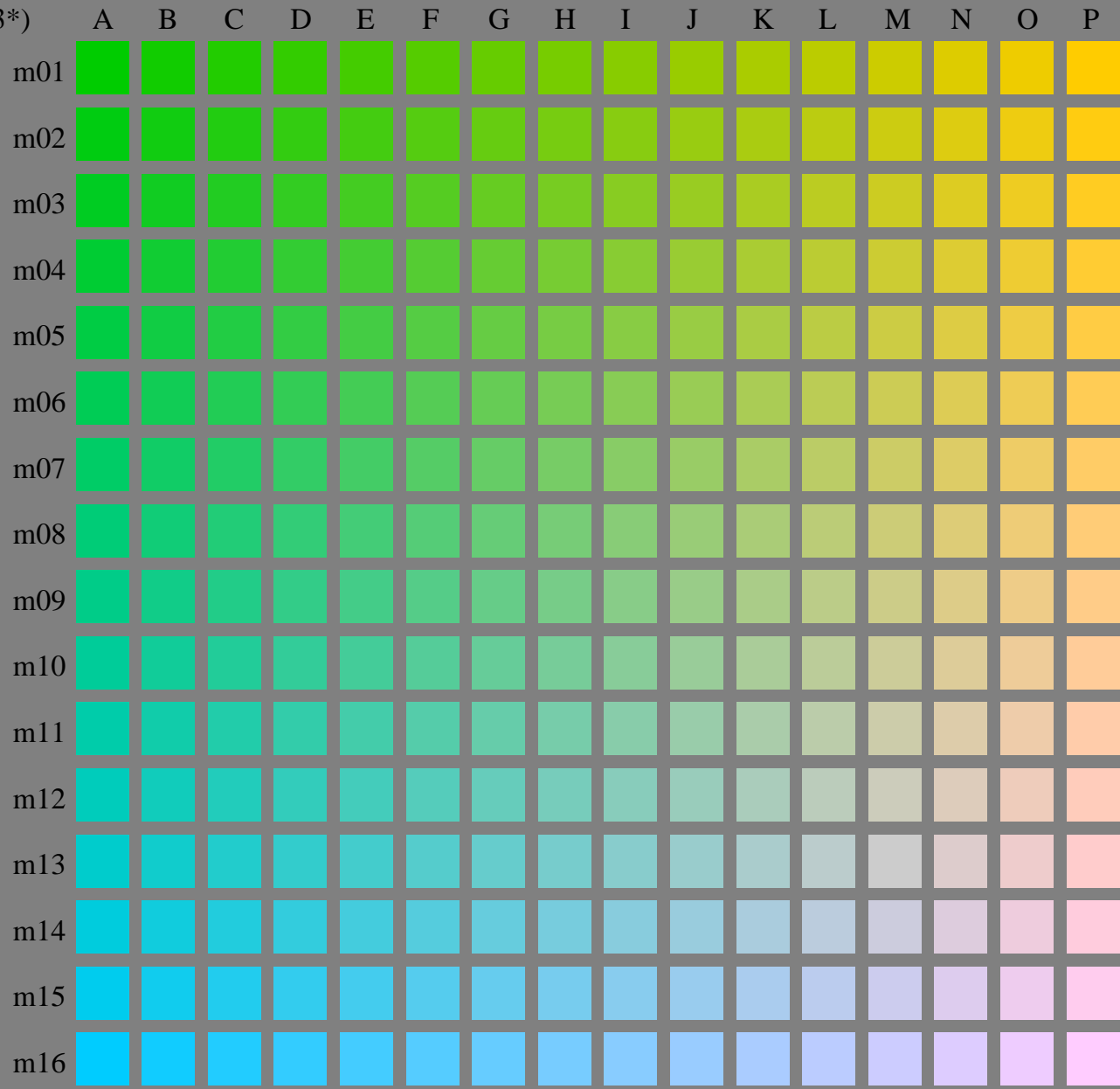
See for similar files: <http://www.ps.bam.de/LE34/>
Technical information: <http://www.ps.bam.de>
Version 2.1, io=1,1

BAM registration: 20050501-LE34/10L/L34E0BNP.PS/.PDF
application for measurement of printer systems
BAM material: code=rh4ta
/LE34/ Form: 12/16; Serie: 1/1, Page: 12, Page count: 12

(olv3* = o3*, 0.8, v3*)

(olv3* = 1, 0.8, 0)

(olv3* = 0, 0.8, 1)



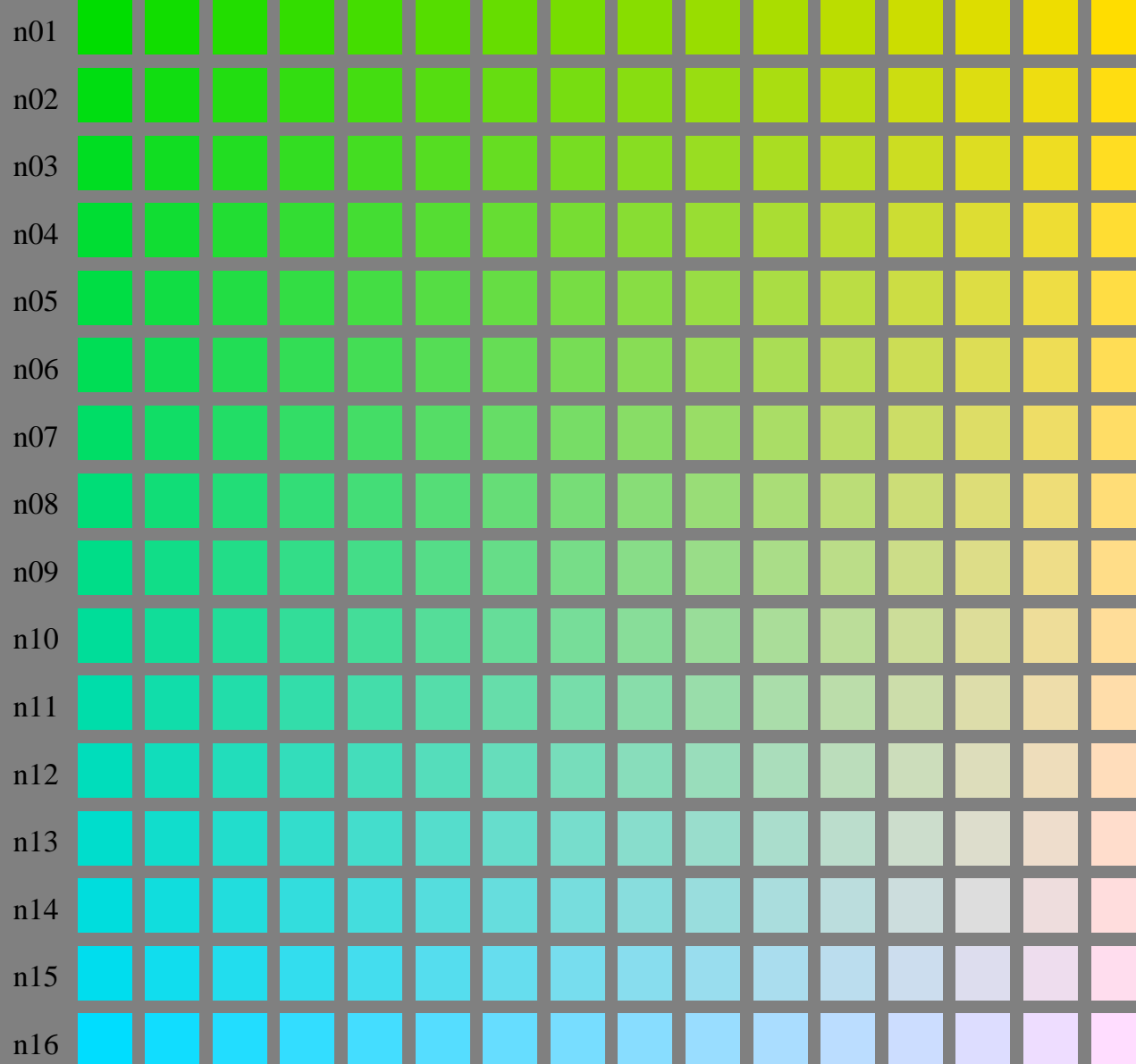
See for similar files: <http://www.ps.bam.de/LE34/>
Technical information: <http://www.ps.bam.de>
Version 2.1, io=1,1

BAM registration: 20050501-LE34/10L/L34E0CNP.PS/.PDF
application for measurement of printer systems

BAM material: code=rh4ta
/LE34/ Form: 13/16; Serie: 1/1, Page: 13 Page count: 13

($olv3^* = o3^*, 0.866, v3^*$)

($olv3^* = 1, 0.866, 0$)



($olv3^* = 0, 0.866, 1$)

See for similar files: <http://www.ps.bam.de/LE34/>
Technical information: <http://www.ps.bam.de>
Version 2.1, io=1,1

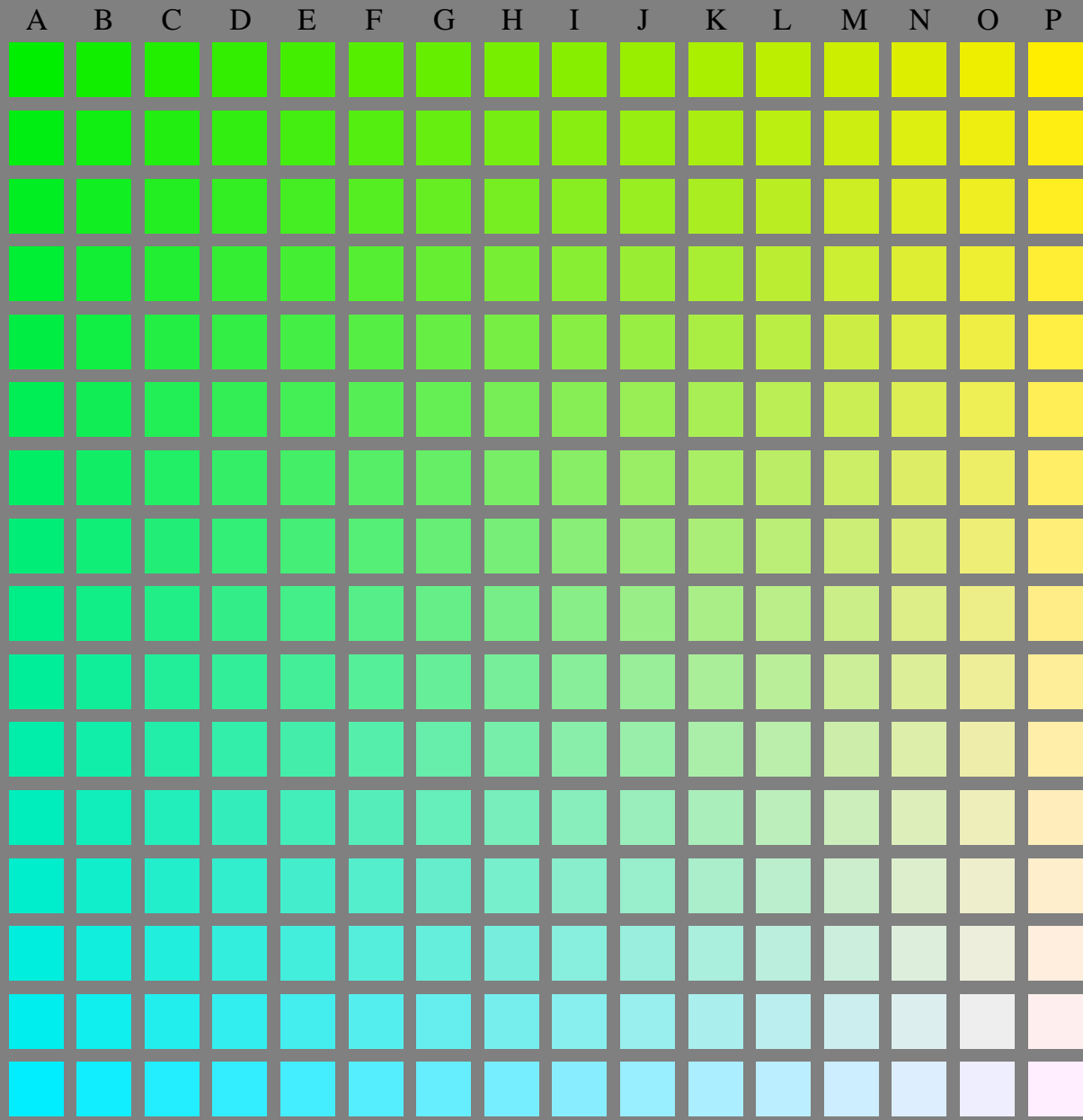
BAM registration: 20050501-LE34/10L/L34E0DNP.PS/.PDF
application for measurement of printer systems

BAM material: code=rh4ta
/LE34/ Form: 14/16; Serie: 1/1, Page: 14 Page count: 14

(olv3* = o3*, 0.933, v3*)

(olv3* = 1, 0.933, 0)

(olv3* = 0, 0.933, 1)



See for similar files: <http://www.ps.bam.de/LE34/>
Technical information: <http://www.ps.bam.de>
Version 2.1, io=1,1

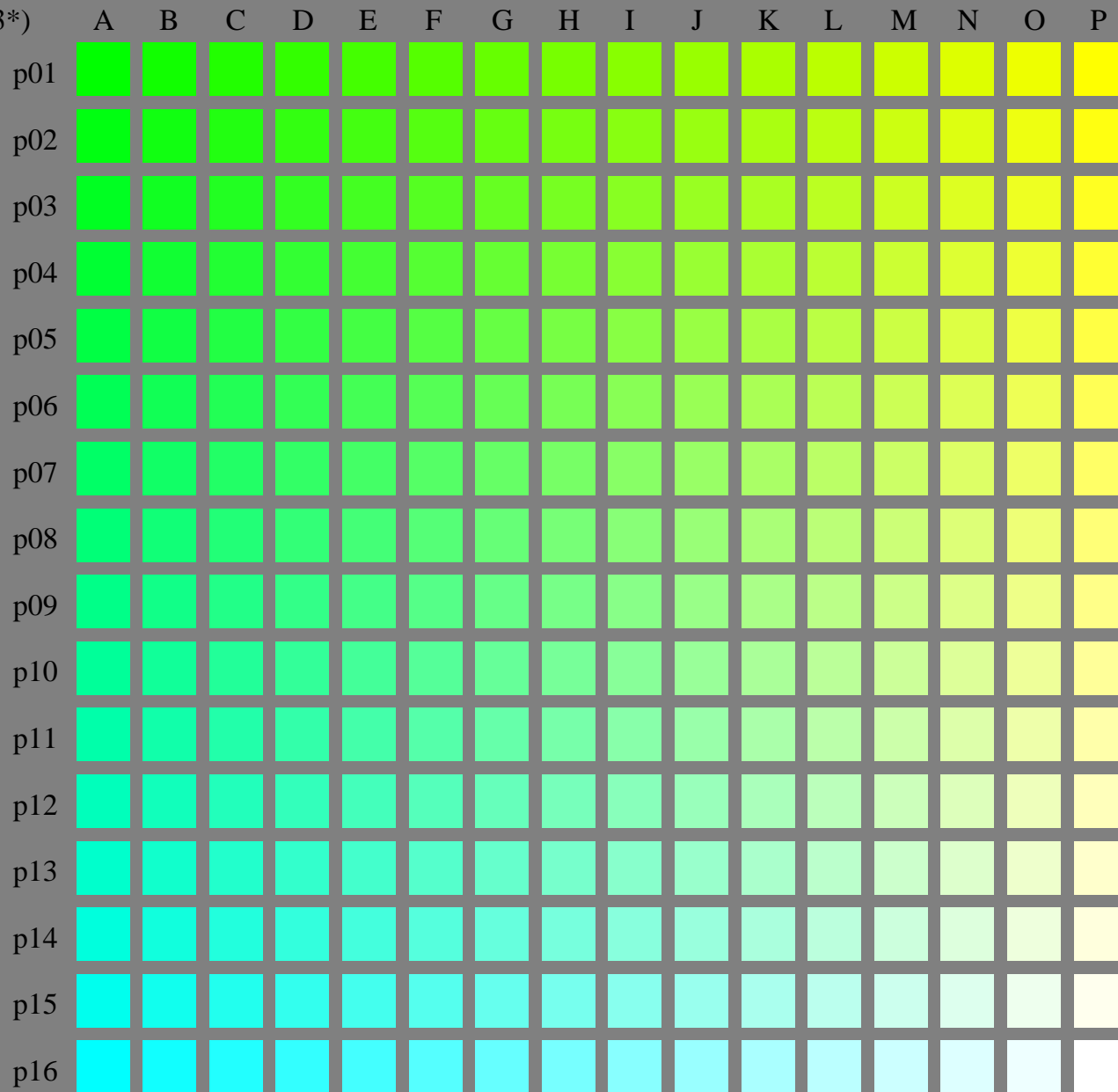
BAM registration: 20050501-LE34/10L/L34E0ENP.PS/.PDF
application for measurement of printer systems

BAM material: code=rh4ta
/LE34/ Form: 15/16; Serie: 1/1, Page: 15 Page count: 15

(olv3* = o3*, 1.0, v3*)

(olv3* = 1, 1.0, 0)

(olv3* = 0, 1.0, 1)



See for similar files: <http://www.ps.bam.de/LE34/>
Technical information: <http://www.ps.bam.de> Version 2.1, io=1,1

BAM registration: 20050501-LE34/10L/L34E0FNP.PS/.PDF
application for measurement of printer systems

BAM material: code=rh4ta

LE34/ Form: 16/16; Serie: 1/1, Page: 16 Page count: 16