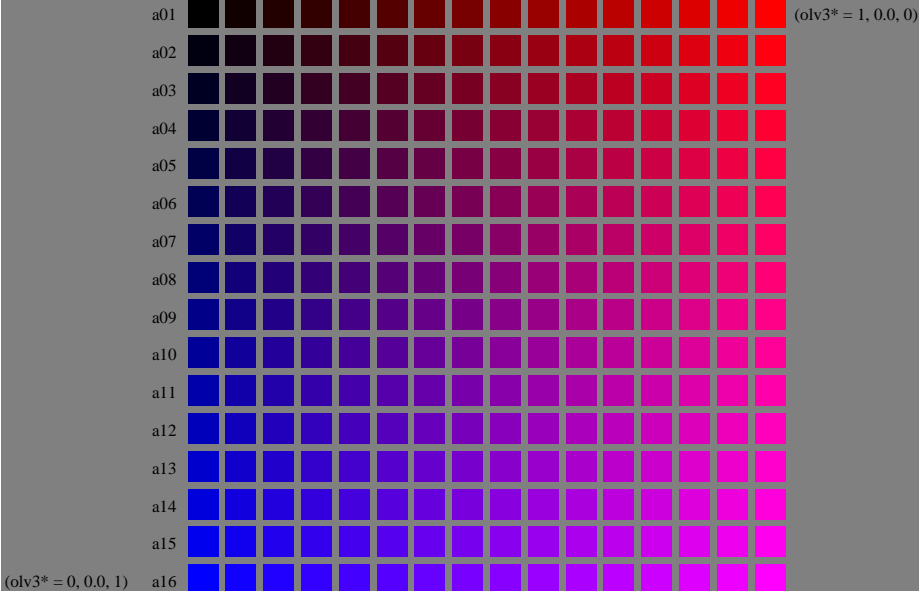


( $olv3^* = o3^*, 0.0, v3^*$ )



( $olv3^* = 0, 0.0, 1$ )

LE340-7. Test chart file with 16x16x16 (=4096) colours; Device dependent colour coordinates  $olv3^*$  of ISO/IEC 15775:1999 as input;  $g3^* = l3^* = 0.0 = const.$

BAM-test chart no. LE34; Systems ORS18 and TLS00  
4096 (=16x16x16) colours of ISO/IEC 15775:1999

input:  $olv3^* setrgbcolor$   
output:  $olv^* setrgbcolor / w^* setgray$

See for similar files: <http://www.ps.bam.de/LE34/>  
Technical information: <http://www.ps.bam.de>  
Version 2.1, io=1,1; FORS; oORS; CIE/LAB

BAM registration: 20050501-LE34/L34E00F1.PS/TXT  
Application for measurement of printer systems

BAM material: code=ha41a  
LE34 From 116 Series 11L Page 1 Page count: 1