

(olv3* = 0.0, 13*, v3*)

A

B

C

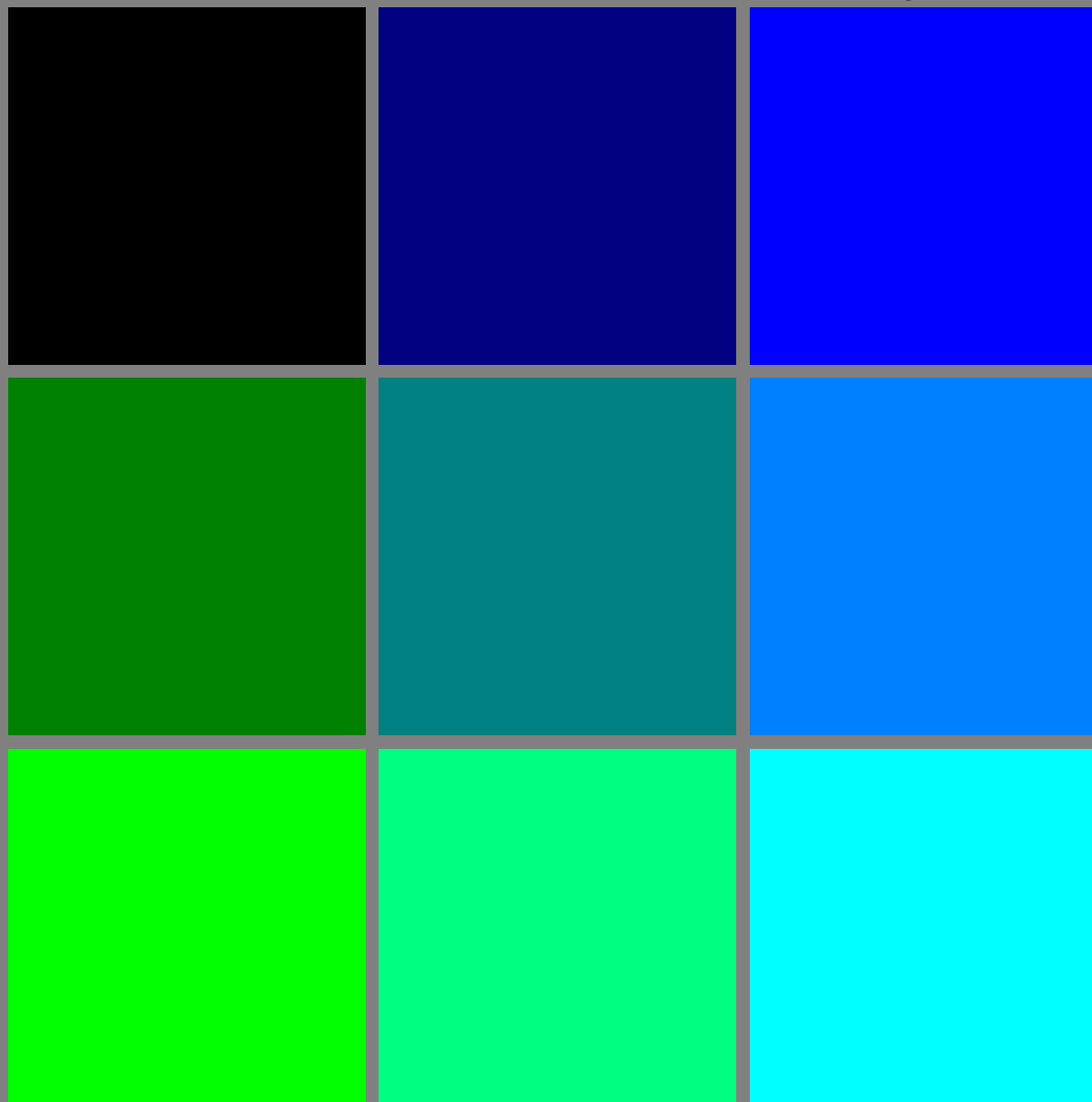
(olv3* = 0.0, 0, 1)

a01

a02

a03

(olv3* = 0.0, 1, 0)



See for similar files: <http://www.ps.bam.de/LE35/>
Technical information: <http://www.ps.bam.de> Version 2.1, io=1,1?

BAM registration: 20050501-LE35/10Q/Q35E00SP.PS/.PDF
application for measurement of printer systems

BAM material: code=rh4ta
/LE35/ Form: 1/3, Serie: 1/1, Page: 1 Page count: 1

($olv3^* = 0.5, 13^*, v3^*$)

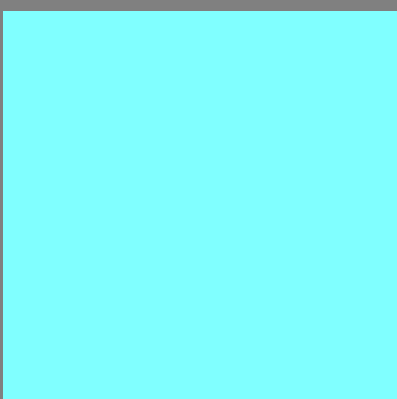
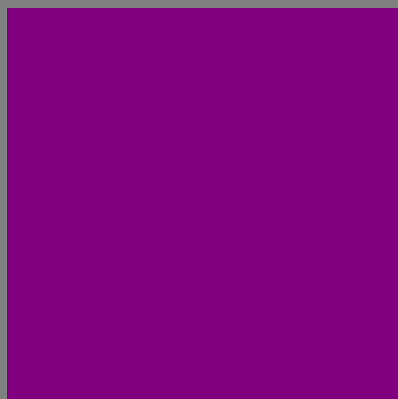
($olv3^* = 0.5, 0, 1$)

b01

b02

b03

($olv3^* = 0.5, 1, 0$)



See for similar files: <http://www.ps.bam.de/LE35/>
Technical information: <http://www.ps.bam.de> Version 2.1, io=1,1?

BAM registration: 20050501-LE35/10Q/Q35E01SP.PS/.PDF
application for measurement of printer systems

BAM material: code=rh4ta
/LE35/ Form: 2/3, Serie: 1/1, Page: 2 Page count: 2

(olv3* = 1.0, 13*, v3*)

A

B

C

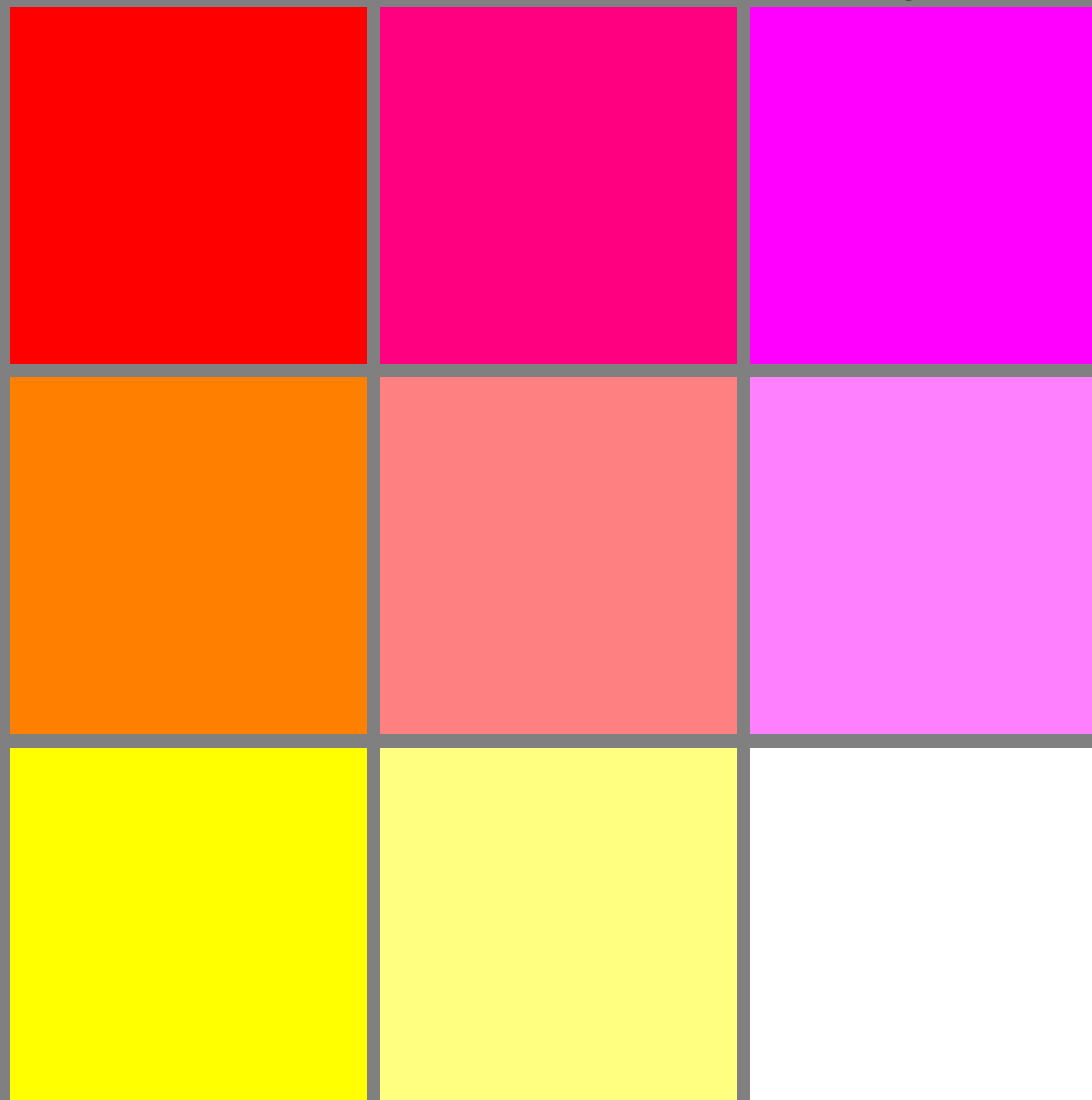
(olv3* = 1.0, 0, 1)

c01

c02

c03

(olv3* = 1.0, 1, 0)



See for similar files: <http://www.ps.bam.de/LE35/>
Technical information: <http://www.ps.bam.de> Version 2.1, io=1,1?

BAM registration: 20050501-LE35/10Q/Q35E02SP.PS/.PDF
application for measurement of printer systems

BAM material: code=rh4ta
/LE35/ Form: 3/3, Serie: 1/1, Page: 3 Page count: 3