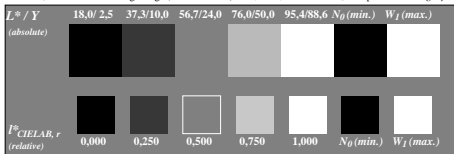
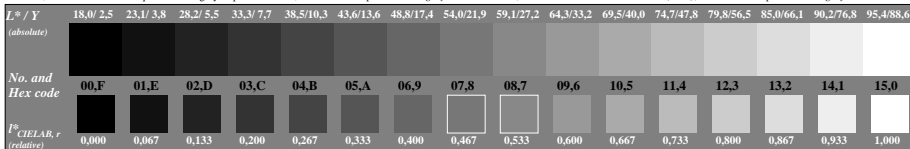


LE510-3, Picture C1: Radial gratings (Siemens-stars) N-W, W-N, N-Z and W-Z, PS operator $w^* \text{ setgray}$

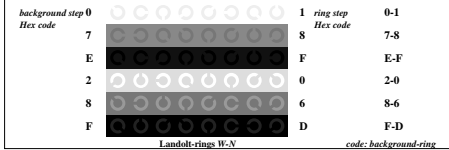


LE510-5, Picture C2: 5 visual equidistant L^* -grey steps + N_0 + W_1 ; Use of the PS operator $w^* \text{ setgray}$

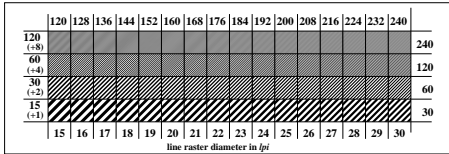


LE510-7, Picture C3: 16 visual equidistant L^* -grey steps; Use of the PS operator $w^* \text{ setgray}$

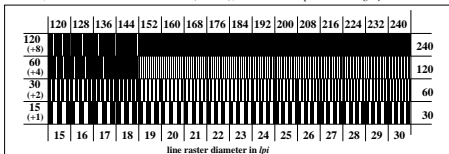
Proposal editor: CEN CSH 99012-test chart no. 3
 Graphic elements, Test chart no. 3 according to ISO/IEC 15775:1999



LE511-1, Picture C4: Landolt-rings W-N; Use of the PS operator $w^* \text{ setgray}$



LE511-3, Picture C5: Line raster under 45° (or 135°); Use of the PS operator $w^* \text{ setgray}$



LE511-5, Picture C6: Line raster under 90° (or 0°); Use of the PS operator $w^* \text{ setgray}$

input: $w^* \text{ setgray}$
 output: $w^* \text{ setgray}$