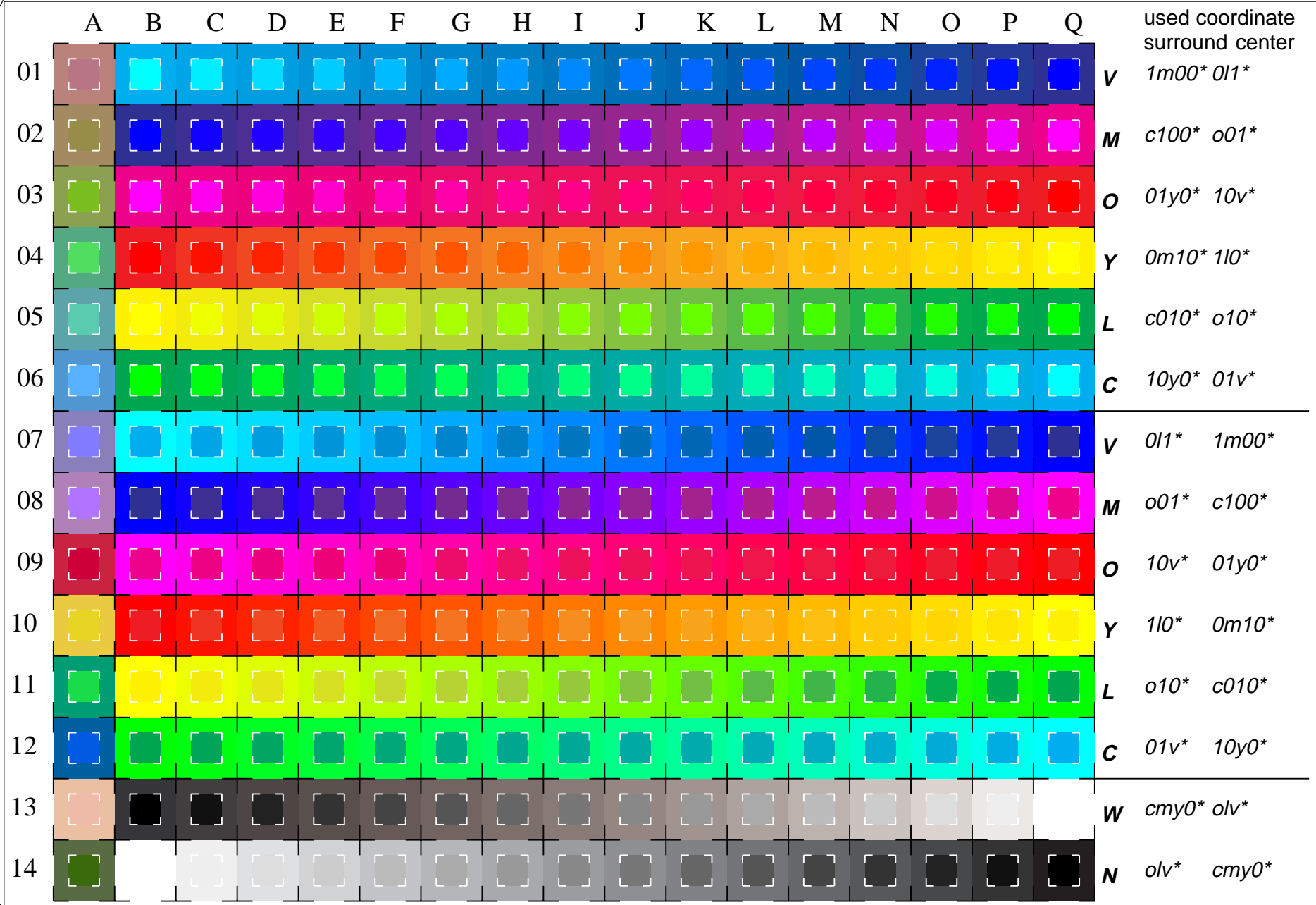
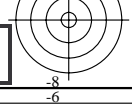
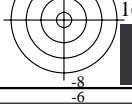


See for similar files: <http://www.ps.bam.de/LE59/LE59.HTM>  
 Information and Order: <http://www.ps.bam.de>  
 Version 2.0, io=0&1,0?

BAM registration: 20030101-LE59/10L/L59E00SP.PS/.PDF  
 application for measurement of monitor (Yr=2.5) and printer output  
 BAM material: code=tha4ta



16 equidistant CIELAB steps in  $cmv0^*$  and  $olv^*$  for colour series C-V, V-M, M-O, O-Y, Y-L, L-C, N-W, W-N and 14 CIE-test colours (left)



Test chart LE59: 16 CIELAB steps in  $cmv0^*$  and  $olv^*$  input(ORS18):  $cmv0^*/olv^*$  set(cmyk/rgb)color  
 Maximum Chroma, Black-White, CIE-test colours output(ORS18): Startup (S) data dependend