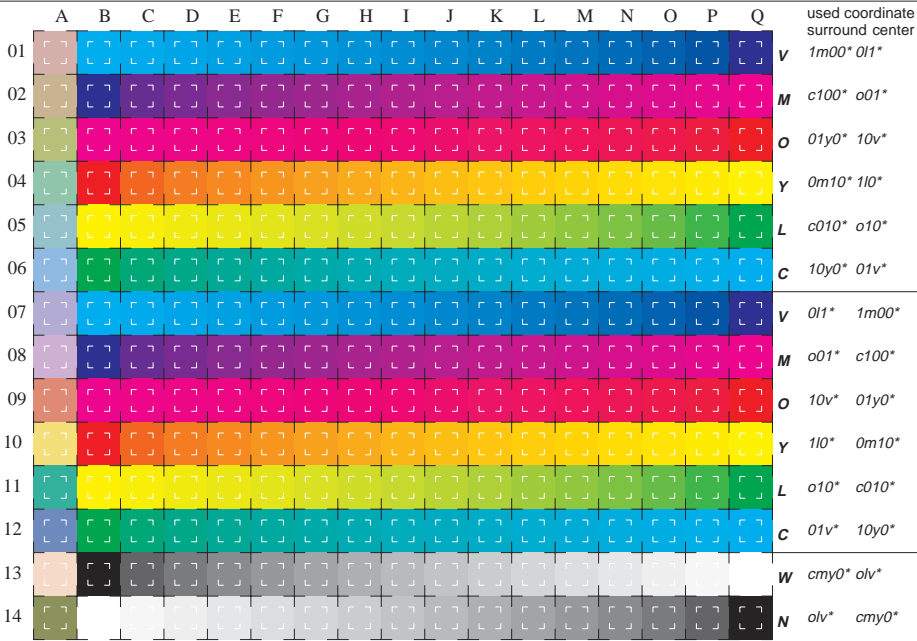


See for similar files: <http://www.ps.bam.de/LE59/LE59.HTM>
 Information and Order: <http://www.ps.bam.de> Version 2.0, i-o-0&l,0; iORS; oORS, CIELAB

BAM registration: 20030101-LE59/10Q/Q59E00F1.PS/.TXT BAM material: code=thata
 application for measurement of monitor (Y1=2.5) and printer output



16 equidistant CIELAB steps in $cmY0^*$ and olv^* for colour series C-V, V-M, M-O, O-Y, Y-L, L-C, N-W, W-N and 14 CIE-test colours (left)
 Test chart LE59: 16 CIELAB steps in $cmYn^*$ and olv^* input(ORS18): $cmYn^*/olv^* set(cmyk/rgb)color$
 Maximum Chroma, Black-White, CIE-test colours output(ORS18): $cmY0^*/000n^* setcmykcolor$