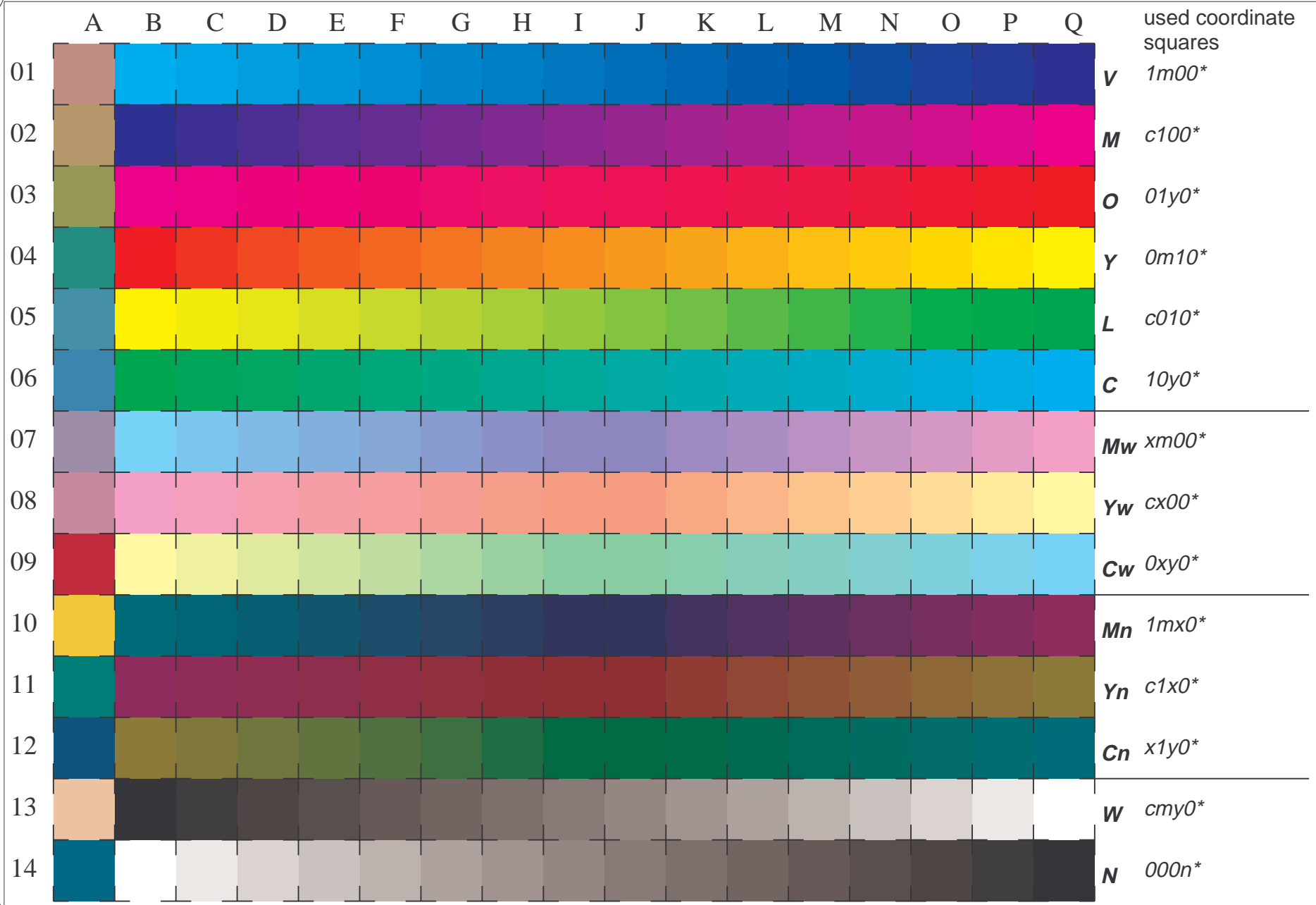
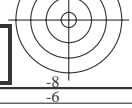
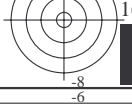


See for similar files: <http://www.ps.bam.de/LE70/LE70.HTM>  
 Information and Order: <http://www.ps.bam.de>  
 Version 2.0, io=0,2; i:TLS; o:TLS, CIELAB

BAM registration: 20030101-LE70/10L/L70E02FP.PS/.PDF  
 application for measurement of monitor (Yr=2.5) and printer output  
 BAM material: code=tha4ta



16 equidistant CIELAB steps in *cmy0\*(TLS00)* for colour series C-V, V-M, M-O, O-Y, Y-L, L-C, N-W, W-N, Cw-Mw, Mw-Yw, Yw-Cw, Cn-Mn, Mn-Yn, Yn-Cn and 14 CIE-test colours (left)



Test chart LE70: 16 CIELAB steps in *cmy0\**  
 Maximum and half (47%) chroma, CIE-test colours

input,TLS00: *cmy0\* setcmykcolor*  
 output,TLS00: *cmy0\* / nnn0\* setcmykcolor*

